

Daily Summary for Amman Stock Exchange

1- VALUE TRADED (JD)

	2018	2019	NET CHANGE	CHANGE (%)
Daily	4,079,414	5,442,249	1,362,835	33.41%
Cumulative(1/4-2/4)	12,439,964	10,477,246	-1,962,718	-15.78%
Cumulative(2/1-2/4)	397,050,679	364,524,829	-32,525,850	-8.19%

2- NO. OF SHARES TRADED

	2018	2019	NET CHANGE	CHANGE (%)
Daily	4,918,374	6,284,660	1,366,286	27.78%
Cumulative(1/4-2/4)	11,481,431	11,771,917	290,486	2.53%
Cumulative(2/1-2/4)	332,943,395	261,194,284	-71,749,111	-21.55%

3- NO. OF TRANSACTIONS

	2018	2019	NET CHANGE	CHANGE (%)
Daily	2,598	2,929	331	12.74%
Cumulative(1/4-2/4)	4,868	5,370	502	10.31%
Cumulative(2/1-2/4)	153,607	125,355	-28,252	-18.39%

4- SOME FINANCIAL RATIOS FOR THE ASE (2/4/2019)

SECTOR	P/E	P/BV	DIVIDEND YIELD (%)	TURNOVER (%)
FINANCIAL	12.054	1.067	5.336	0.096
SERVICES	17.316	1.167	4.283	0.045
INDUSTRY	18.507	1.318	0.423	0.167
OVERALL	12.405	1.144	4.401	0.093

5- STOCK PRICE INDEX WEIGHTED BY FREE FLOAT MARKET CAPITALIZATION (1999=1000)

	MONDAY 01/04/2019	TUESDAY 02/04/2019	% CHANGE	
			DAY BEFORE	YTD
GENERAL	1912.3	1923.1	0.56%	0.75%
FINANCIAL	2649.0	2672.3	0.88%	0.74%
SERVICES	1296.3	1293.7	-0.20%	1.09%
INDUSTRY	1853.0	1855.7	0.15%	-1.43%

6- STOCK PRICE INDEX WEIGHTED BY MARKET CAPITALIZATION (1991=1000)

	MONDAY 01/04/2019	TUESDAY 02/04/2019	% CHANGE	
			DAY BEFORE	YTD
GENERAL	3710.1	3745.7	0.96%	-1.35%
BANKS	7860.6	7986.1	1.60%	-3.15%
INSURANCE	1353.7	1350.3	-0.25%	-1.90%
SERVICES	787.2	785.9	-0.16%	-1.37%
INDUSTRY	2410.7	2408.2	-0.10%	4.19%

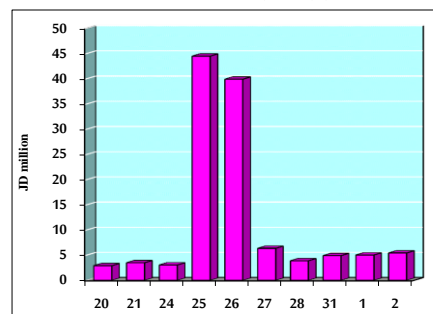
7- STOCK PRICE MARKET INDEX WEIGHTED BY FREE FLOAT MARKET CAP. (2012=1000)

	MONDAY 01/04/2019	TUESDAY 02/04/2019	% CHANGE	
			DAY BEFORE	YTD
FIRST MARKET	1016.4	1021.5	0.51%	1.01%
SECOND MARKET	847.8	854.2	0.76%	2.72%

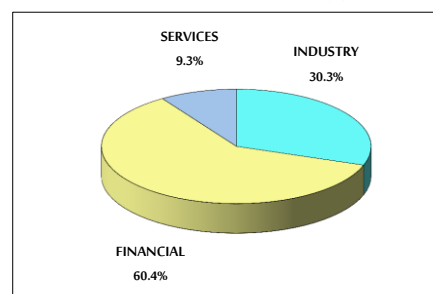
8- MARKET CAPITALIZATION (JD)

ASE MARKET CAPITALIZATION	15,735,197,188	15,873,572,309	0.88%	-1.55%
---------------------------	----------------	----------------	-------	--------

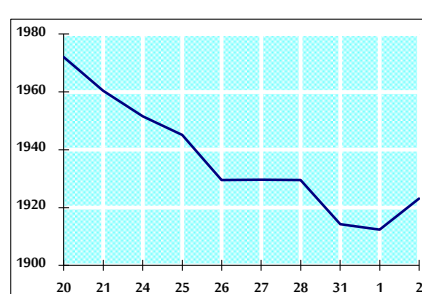
VALUE TRADED FROM 20/3 TO 2/4/2019



VALUE TRADED BY SECTOR TUESDAY 2/4/2019



GENERAL FREE FLOAT PRICE INDEX FROM 20/3 TO 2/4/2019



GENERAL PRICE INDEX FROM 20/3 TO 2/4/2019

