

Daily Summary for Amman Stock Exchange

1- VALUE TRADED (JD)

	2018	2019	NET CHANGE	CHANGE (%)
Daily	2,581,950	3,840,560	1,258,610	48.75%
Cumulative(3/3-6/3)	17,151,632	20,510,312	3,358,680	19.58%
Cumulative(2/1-6/3)	270,094,004	208,608,847	-61,485,157	-22.76%

2- NO. OF SHARES TRADED

	2018	2019	NET CHANGE	CHANGE (%)
Daily	2,636,214	3,280,574	644,360	24.44%
Cumulative(3/3-6/3)	14,816,884	16,748,693	1,931,809	13.04%
Cumulative(2/1-6/3)	228,666,145	162,979,303	-65,686,842	-28.73%

3- NO. OF TRANSACTIONS

	2018	2019	NET CHANGE	CHANGE (%)
Daily	1,944	1,840	-104	-5.35%
Cumulative(3/3-6/3)	8,619	7,988	-631	-7.32%
Cumulative(2/1-6/3)	105,305	83,335	-21,970	-20.86%

4- SOME FINANCIAL RATIOS FOR THE ASE (6/3/2019)

SECTOR	P/E	P/BV	DIVIDEND YIELD (%)	TURNOVER (%)
FINANCIAL	12.970	1.106	5.116	0.054
SERVICES	16.504	1.201	5.447	0.041
INDUSTRY	59.426	1.356	3.364	0.036
OVERALL	14.976	1.187	4.949	0.049

5- STOCK PRICE INDEX WEIGHTED BY FREE FLOAT MARKET CAPITALIZATION (1999=1000)

	TUESDAY 05/03/2019	WEDNESDAY 06/03/2019	% CHANGE	
			DAY BEFORE	YTD
GENERAL	1984.0	1984.5	0.03%	3.96%
FINANCIAL	2735.7	2737.6	0.07%	3.20%
SERVICES	1320.5	1317.4	-0.24%	2.94%
INDUSTRY	1966.3	1971.0	0.24%	4.69%

6- STOCK PRICE INDEX WEIGHTED BY MARKET CAPITALIZATION (1991=1000)

	TUESDAY 05/03/2019	WEDNESDAY 06/03/2019	% CHANGE	
			DAY BEFORE	YTD
GENERAL	3914.3	3917.2	0.07%	3.16%
BANKS	8400.7	8415.3	0.17%	2.05%
INSURANCE	1365.9	1364.8	-0.09%	-0.85%
SERVICES	815.3	812.2	-0.37%	1.93%
INDUSTRY	2485.1	2487.4	0.09%	7.62%

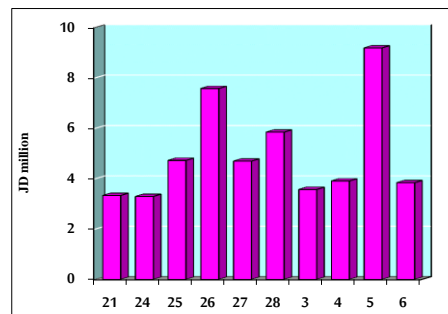
7- STOCK PRICE MARKET INDEX WEIGHTED BY FREE FLOAT MARKET CAP. (2012=1000)

	TUESDAY 05/03/2019	WEDNESDAY 06/03/2019	% CHANGE	
			DAY BEFORE	YTD
FIRST MARKET	1055.7	1055.9	0.02%	4.41%
SECOND MARKET	864.6	865.7	0.13%	4.10%

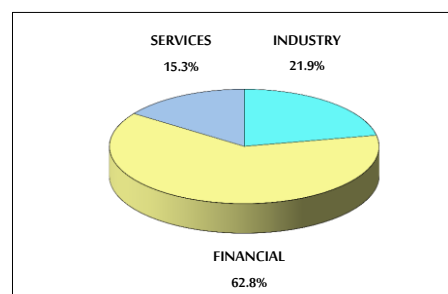
8- MARKET CAPITALIZATION (JD)

	2018	2019	NET CHANGE	CHANGE (%)
ASE MARKET CAPITALIZATION	16,519,876,205	16,527,832,486	7,956,281	0.05%

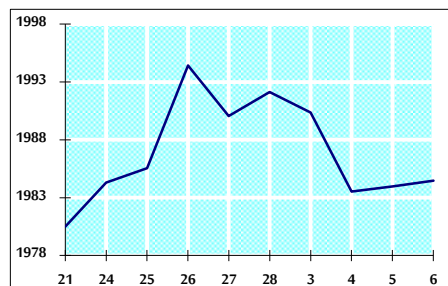
VALUE TRADED FROM 21/2 TO 6/3/2019



VALUE TRADED BY SECTOR WEDNESDAY 6/3/2019



GENERAL FREE FLOAT PRICE INDEX FROM 21/2 TO 6/3/2019



GENERAL PRICE INDEX FROM 21/2 TO 6/3/2019

