

Daily Summary for Amman Stock Exchange

1- VALUE TRADED (JD)

	2018	2019	NET CHANGE	CHANGE (%)
Daily	3,876,800	3,573,174	-303,626	-7.83%
Cumulative(3/3-3/3)	3,876,800	3,573,174	-303,626	-7.83%
Cumulative(2/1-3/3)	256,819,172	191,671,709	-65,147,463	-25.37%

2- NO. OF SHARES TRADED

	2018	2019	NET CHANGE	CHANGE (%)
Daily	2,858,152	4,095,935	1,237,783	43.31%
Cumulative(3/3-3/3)	2,858,152	4,095,935	1,237,783	43.31%
Cumulative(2/1-3/3)	216,707,413	150,326,545	-66,380,868	-30.63%

3- NO. OF TRANSACTIONS

	2018	2019	NET CHANGE	CHANGE (%)
Daily	2,378	2,030	-348	-14.63%
Cumulative(3/3-3/3)	2,378	2,030	-348	-14.63%
Cumulative(2/1-3/3)	99,064	77,377	-21,687	-21.89%

4- SOME FINANCIAL RATIOS FOR THE ASE (3/3/2019)

SECTOR	P/E	P/BV	DIVIDEND YIELD (%)	TURNOVER (%)
FINANCIAL	12.933	1.103	5.179	0.073
SERVICES	16.719	1.217	5.377	0.032
INDUSTRY	59.763	1.359	3.357	0.056
OVERALL	14.984	1.188	4.981	0.061

5- STOCK PRICE INDEX WEIGHTED BY FREE FLOAT MARKET CAPITALIZATION (1999=1000)

	THURSDAY 28/02/2019	SUNDAY 03/03/2019	% CHANGE	
			DAY BEFORE	YTD
GENERAL	1992.1	1990.4	-0.09%	4.27%
FINANCIAL	2745.3	2743.5	-0.06%	3.42%
SERVICES	1330.3	1328.0	-0.17%	3.77%
INDUSTRY	1966.5	1965.4	-0.05%	4.39%

6- STOCK PRICE INDEX WEIGHTED BY MARKET CAPITALIZATION (1991=1000)

	THURSDAY 28/02/2019	SUNDAY 03/03/2019	% CHANGE	
			DAY BEFORE	YTD
GENERAL	3920.1	3920.1	0.00%	3.24%
BANKS	8386.9	8387.0	0.00%	1.71%
INSURANCE	1375.5	1366.9	-0.63%	-0.70%
SERVICES	824.1	824.8	0.08%	3.51%
INDUSTRY	2495.1	2493.9	-0.05%	7.90%

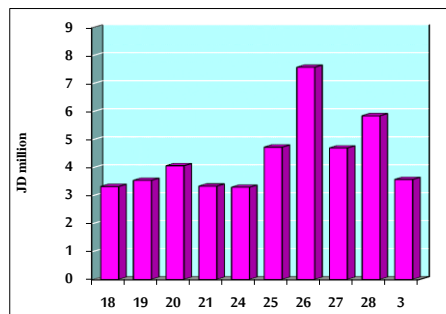
7- STOCK PRICE MARKET INDEX WEIGHTED BY FREE FLOAT MARKET CAP. (2012=1000)

	THURSDAY 28/02/2019	SUNDAY 03/03/2019	% CHANGE	
			DAY BEFORE	YTD
FIRST MARKET	1061.1	1059.5	-0.15%	4.77%
SECOND MARKET	863.8	866.5	0.31%	4.19%

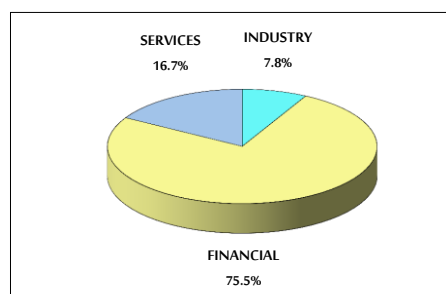
8- MARKET CAPITALIZATION (JD)

ASE MARKET CAPITALIZATION	16,543,660,287	16,542,118,823	-0.01%	2.60%
---------------------------	----------------	----------------	--------	-------

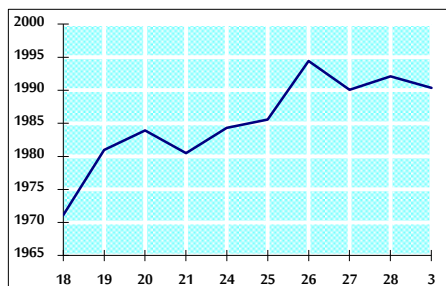
VALUE TRADED FROM 18/2 TO 3/3/2019



VALUE TRADED BY SECTOR SUNDAY 3/3/2019



GENERAL FREE FLOAT PRICE INDEX FROM 18/2 TO 3/3/2019



GENERAL PRICE INDEX FROM 18/2 TO 3/3/2019

