

## Daily Summary for Amman Stock Exchange

### 1- VALUE TRADED (JD)

	2018	2019	NET CHANGE	CHANGE (%)
Daily	7,314,605	5,552,018	-1,762,587	-24.10%
Cumulative(3/2-12/2)	58,838,131	38,116,737	-20,721,394	-35.22%
Cumulative(2/1-12/2)	172,861,125	129,011,107	-43,850,018	-25.37%

### 2- NO. OF SHARES TRADED

	2018	2019	NET CHANGE	CHANGE (%)
Daily	3,835,073	4,979,152	1,144,079	29.83%
Cumulative(3/2-12/2)	64,412,383	27,384,278	-37,028,105	-57.49%
Cumulative(2/1-12/2)	160,652,825	93,132,881	-67,519,944	-42.03%

### 3- NO. OF TRANSACTIONS

	2018	2019	NET CHANGE	CHANGE (%)
Daily	2,340	2,242	-98	-4.19%
Cumulative(3/2-12/2)	19,222	15,945	-3,277	-17.05%
Cumulative(2/1-12/2)	66,443	51,862	-14,581	-21.95%

### 4- SOME FINANCIAL RATIOS FOR THE ASE (12/2/2019)

SECTOR	P/E	P/BV	DIVIDEND YIELD (%)	TURNOVER (%)
FINANCIAL	12.672	1.096	5.242	0.095
SERVICES	17.200	1.249	5.262	0.040
INDUSTRY	58.313	1.367	3.347	0.036
OVERALL	14.617	1.187	4.990	0.074

### 5- STOCK PRICE INDEX WEIGHTED BY FREE FLOAT MARKET CAPITALIZATION (1999=1000)

	MONDAY 11/02/2019	TUESDAY 12/02/2019	% CHANGE	
			DAY BEFORE	YTD
GENERAL	1974.2	1989.1	0.76%	4.21%
FINANCIAL	2710.2	2726.3	0.59%	2.78%
SERVICES	1332.7	1346.5	1.04%	5.21%
INDUSTRY	1970.0	1980.8	0.55%	5.21%

### 6- STOCK PRICE INDEX WEIGHTED BY MARKET CAPITALIZATION (1991=1000)

	MONDAY 11/02/2019	TUESDAY 12/02/2019	% CHANGE	
			DAY BEFORE	YTD
GENERAL	3890.9	3924.4	0.86%	3.35%
BANKS	8273.4	8352.7	0.96%	1.29%
INSURANCE	1372.6	1373.6	0.08%	-0.21%
SERVICES	836.1	839.2	0.37%	5.32%
INDUSTRY	2484.0	2507.7	0.95%	8.49%

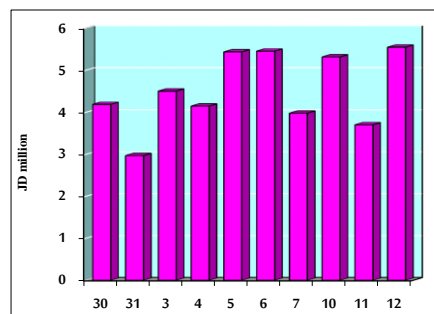
### 7- STOCK PRICE MARKET INDEX WEIGHTED BY FREE FLOAT MARKET CAP. (2012=1000)

	MONDAY 11/02/2019	TUESDAY 12/02/2019	% CHANGE	
			DAY BEFORE	YTD
FIRST MARKET	1048.2	1056.9	0.83%	4.51%
SECOND MARKET	872.5	875.3	0.33%	5.26%

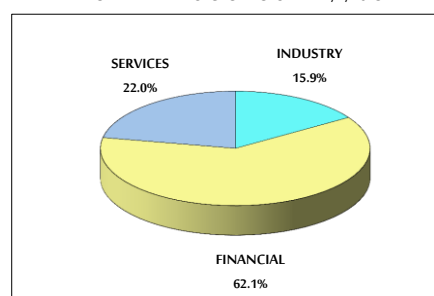
### 8- MARKET CAPITALIZATION (JD)

ASE MARKET CAPITALIZATION	16,450,485,023	16,579,061,981	0.78%	2.83%
---------------------------	----------------	----------------	-------	-------

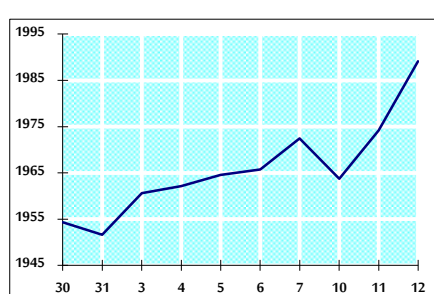
### VALUE TRADED FROM 30/1 TO 12/2/2019



### VALUE TRADED BY SECTOR TUESDAY 12/2/2019



### GENERAL FREE FLOAT PRICE INDEX FROM 30/1 TO 12/2/2019



### GENERAL PRICE INDEX FROM 30/1 TO 12/2/2019

