

Daily Summary for Amman Stock Exchange

1- VALUE TRADED (JD)

	2018	2019	NET CHANGE	CHANGE (%)
Daily	4,930,128	5,458,535	528,407	10.72%
Cumulative(3/2-6/2)	37,885,046	19,557,916	-18,327,130	-48.38%
Cumulative(2/1-6/2)	151,908,040	110,452,286	-41,455,754	-27.29%

2- NO. OF SHARES TRADED

	2018	2019	NET CHANGE	CHANGE (%)
Daily	3,975,542	2,844,732	-1,130,810	-28.44%
Cumulative(3/2-6/2)	49,829,481	12,249,402	-37,580,079	-75.42%
Cumulative(2/1-6/2)	146,069,923	77,998,005	-68,071,918	-46.60%

3- NO. OF TRANSACTIONS

	2018	2019	NET CHANGE	CHANGE (%)
Daily	2,485	1,811	-674	-27.12%
Cumulative(3/2-6/2)	10,445	8,307	-2,138	-20.47%
Cumulative(2/1-6/2)	57,666	44,224	-13,442	-23.31%

4- SOME FINANCIAL RATIOS FOR THE ASE (6/2/2019)

SECTOR	P/E	P/BV	DIVIDEND YIELD (%)	TURNOVER (%)
FINANCIAL	17.604	1.104	4.954	0.045
SERVICES	17.120	1.250	5.260	0.036
INDUSTRY	57.654	1.352	3.385	0.042
OVERALL	18.811	1.192	4.801	0.042

5- STOCK PRICE INDEX WEIGHTED BY FREE FLOAT MARKET CAPITALIZATION (1999=1000)

	TUESDAY 05/02/2019	WEDNESDAY 06/02/2019	% CHANGE	
			DAY BEFORE	YTD
GENERAL	1964.5	1965.8	0.06%	2.98%
FINANCIAL	2694.8	2696.9	0.08%	1.67%
SERVICES	1337.0	1337.1	0.01%	4.48%
INDUSTRY	1950.3	1951.5	0.06%	3.65%

6- STOCK PRICE INDEX WEIGHTED BY MARKET CAPITALIZATION (1991=1000)

	TUESDAY 05/02/2019	WEDNESDAY 06/02/2019	% CHANGE	
			DAY BEFORE	YTD
GENERAL	3890.3	3901.2	0.28%	2.74%
BANKS	8273.9	8299.7	0.31%	0.65%
INSURANCE	1359.6	1364.9	0.39%	-0.84%
SERVICES	843.1	846.5	0.41%	6.24%
INDUSTRY	2467.9	2469.5	0.07%	6.84%

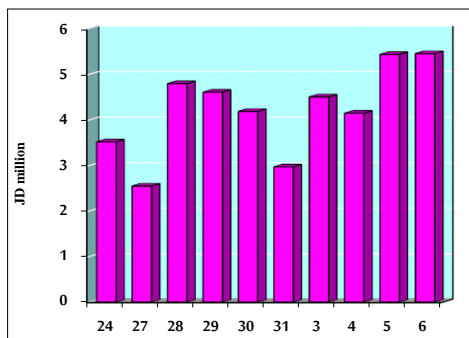
7- STOCK PRICE MARKET INDEX WEIGHTED BY FREE FLOAT MARKET CAP. (2012=1000)

	TUESDAY 05/02/2019	WEDNESDAY 06/02/2019	% CHANGE	
			DAY BEFORE	YTD
FIRST MARKET	1040.3	1041.0	0.07%	2.94%
SECOND MARKET	880.1	879.4	-0.07%	5.75%

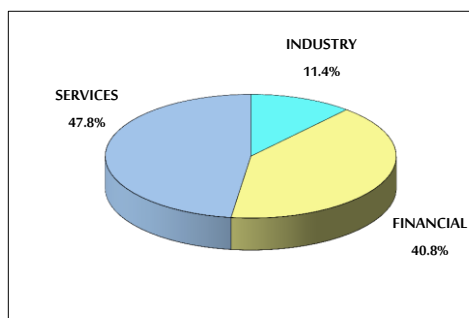
8- MARKET CAPITALIZATION (JD)

ASE MARKET CAPITALIZATION	16,449,754,690	16,491,969,653	0.26%	2.29%
---------------------------	----------------	----------------	-------	-------

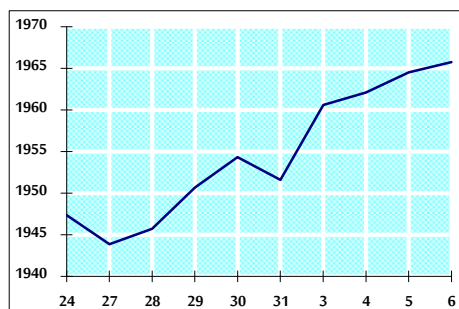
VALUE TRADED FROM 24/1 TO 6/2/2019



VALUE TRADED BY SECTOR WEDNESDAY 6/2/2019



GENERAL FREE FLOAT PRICE INDEX FROM 24/1 TO 6/2/2019



GENERAL PRICE INDEX FROM 24/1 TO 6/2/2019

