

Daily Summary for Amman Stock Exchange

1- VALUE TRADED (JD)

	2018	2019	NET CHANGE	CHANGE (%)
Daily	5,388,027	5,440,505	52,478	0.97%
Cumulative(3/2-5/2)	32,954,918	14,099,381	-18,855,537	-57.22%
Cumulative(2/1-5/2)	146,977,912	104,993,751	-41,984,161	-28.56%

2- NO. OF SHARES TRADED

	2018	2019	NET CHANGE	CHANGE (%)
Daily	6,401,273	3,552,729	-2,848,544	-44.50%
Cumulative(3/2-5/2)	45,853,939	9,404,670	-36,449,269	-79.49%
Cumulative(2/1-5/2)	142,094,381	75,153,273	-66,941,108	-47.11%

3- NO. OF TRANSACTIONS

	2018	2019	NET CHANGE	CHANGE (%)
Daily	2,478	1,784	-694	-28.01%
Cumulative(3/2-5/2)	7,960	6,496	-1,464	-18.39%
Cumulative(2/1-5/2)	55,181	42,413	-12,768	-23.14%

4- SOME FINANCIAL RATIOS FOR THE ASE (5/2/2019)

SECTOR	P/E	P/BV	DIVIDEND YIELD (%)	TURNOVER (%)
FINANCIAL	17.552	1.101	4.969	0.065
SERVICES	17.068	1.246	5.276	0.025
INDUSTRY	57.600	1.350	3.388	0.045
OVERALL	18.759	1.188	4.814	0.053

5- STOCK PRICE INDEX WEIGHTED BY FREE FLOAT MARKET CAPITALIZATION (1999=1000)

	MONDAY 04/02/2019	TUESDAY 05/02/2019	% CHANGE	
			DAY BEFORE	YTD
GENERAL	1962.1	1964.5	0.12%	2.92%
FINANCIAL	2687.4	2694.8	0.28%	1.59%
SERVICES	1336.8	1337.0	0.01%	4.47%
INDUSTRY	1955.1	1950.3	-0.25%	3.59%

6- STOCK PRICE INDEX WEIGHTED BY MARKET CAPITALIZATION (1991=1000)

	MONDAY 04/02/2019	TUESDAY 05/02/2019	% CHANGE	
			DAY BEFORE	YTD
GENERAL	3889.1	3890.3	0.03%	2.46%
BANKS	8263.0	8273.9	0.13%	0.34%
INSURANCE	1356.0	1359.6	0.27%	-1.23%
SERVICES	844.3	843.1	-0.15%	5.81%
INDUSTRY	2471.7	2467.9	-0.16%	6.77%

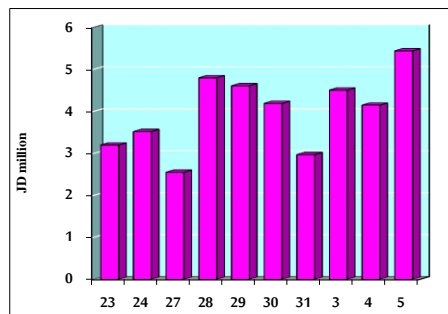
7- STOCK PRICE MARKET INDEX WEIGHTED BY FREE FLOAT MARKET CAP. (2012=1000)

	MONDAY 04/02/2019	TUESDAY 05/02/2019	% CHANGE	
			DAY BEFORE	YTD
FIRST MARKET	1038.0	1040.3	0.22%	2.87%
SECOND MARKET	883.3	880.1	-0.36%	5.83%

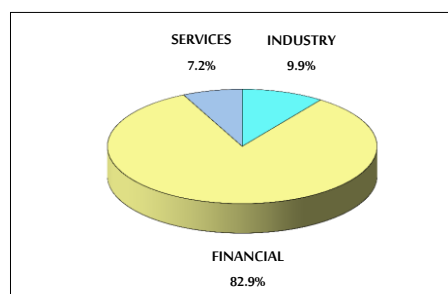
8- MARKET CAPITALIZATION (JD)

ASE MARKET CAPITALIZATION	16,444,110,184	16,449,754,690	0.03%	2.03%
---------------------------	----------------	----------------	-------	-------

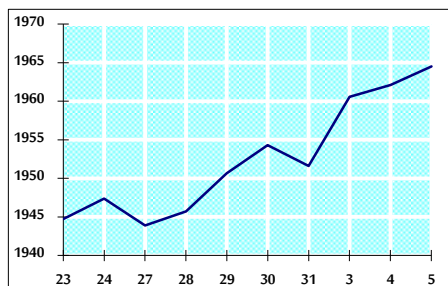
VALUE TRADED FROM 23/1 TO 5/2/2019



VALUE TRADED BY SECTOR TUESDAY 5/2/2019



GENERAL FREE FLOAT PRICE INDEX FROM 23/1 TO 5/2/2019



GENERAL PRICE INDEX FROM 23/1 TO 5/2/2019

