

## Daily Summary for Amman Stock Exchange

### 1- VALUE TRADED (JD)

	2018	2019	NET CHANGE	CHANGE (%)
Daily	5,346,559	2,973,344	-2,373,215	-44.39%
Cumulative(2/1-31/1)	114,022,994	90,894,370	-23,128,624	-20.28%
Cumulative(2/1-31/1)	114,022,994	90,894,370	-23,128,624	-20.28%

### 2- NO. OF SHARES TRADED

	2018	2019	NET CHANGE	CHANGE (%)
Daily	3,292,540	2,687,096	-605,444	-18.39%
Cumulative(2/1-31/1)	96,240,442	65,748,603	-30,491,839	-31.68%
Cumulative(2/1-31/1)	96,240,442	65,748,603	-30,491,839	-31.68%

### 3- NO. OF TRANSACTIONS

	2018	2019	NET CHANGE	CHANGE (%)
Daily	1,444	1,931	487	33.73%
Cumulative(2/1-31/1)	47,221	35,917	-11,304	-23.94%
Cumulative(2/1-31/1)	47,221	35,917	-11,304	-23.94%

### 4- SOME FINANCIAL RATIOS FOR THE ASE (31/1/2019)

SECTOR	P/E	P/BV	DIVIDEND YIELD (%)	TURNOVER (%)
FINANCIAL	17.530	1.099	4.975	0.039
SERVICES	16.711	1.220	5.389	0.036
INDUSTRY	55.746	1.347	3.401	0.050
OVERALL	18.632	1.183	4.838	0.040

### 5- STOCK PRICE INDEX WEIGHTED BY FREE FLOAT MARKET CAPITALIZATION (1999=1000)

	WEDNESDAY 30/01/2019	THURSDAY 31/01/2019	% CHANGE	
			DAY BEFORE	YTD
GENERAL	1954.3	1951.6	-0.14%	2.24%
FINANCIAL	2691.6	2683.4	-0.30%	1.16%
SERVICES	1316.9	1317.9	0.07%	2.98%
INDUSTRY	1940.2	1945.5	0.28%	3.34%

### 6- STOCK PRICE INDEX WEIGHTED BY MARKET CAPITALIZATION (1991=1000)

	WEDNESDAY 30/01/2019	THURSDAY 31/01/2019	% CHANGE	
			DAY BEFORE	YTD
GENERAL	3887.0	3872.5	-0.37%	1.99%
BANKS	8319.1	8264.8	-0.65%	0.23%
INSURANCE	1356.4	1350.9	-0.40%	-1.86%
SERVICES	824.6	825.1	0.06%	3.55%
INDUSTRY	2457.8	2462.0	0.17%	6.52%

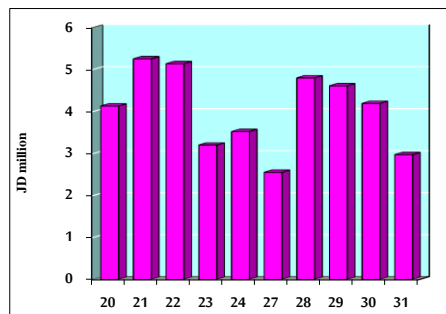
### 7- STOCK PRICE MARKET INDEX WEIGHTED BY FREE FLOAT MARKET CAP. (2012=1000)

	WEDNESDAY 30/01/2019	THURSDAY 31/01/2019	% CHANGE	
			DAY BEFORE	YTD
FIRST MARKET	1034.8	1033.2	-0.16%	2.16%
SECOND MARKET	870.4	871.7	0.16%	4.83%

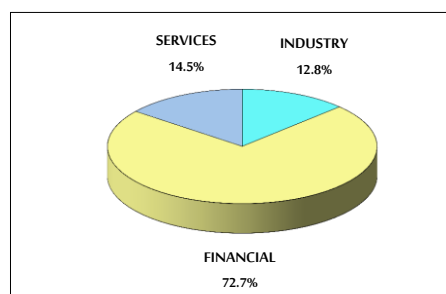
### 8- MARKET CAPITALIZATION (JD)

ASE MARKET CAPITALIZATION	16,432,757,231	16,379,057,402	-0.33%	1.59%
---------------------------	----------------	----------------	--------	-------

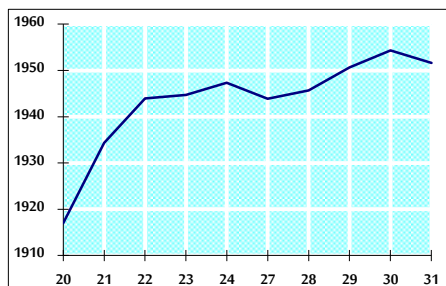
VALUE TRADED FROM 20/1 TO 31/1/2019



VALUE TRADED BY SECTOR THURSDAY 31/1/2019



GENERAL FREE FLOAT PRICE INDEX FROM 20/1 TO 31/1/2019



GENERAL PRICE INDEX FROM 20/1 TO 31/1/2019

