

Daily Summary for Amman Stock Exchange

1- VALUE TRADED (JD)

	2018	2019	NET CHANGE	CHANGE (%)
Daily	10,348,914	4,610,734	-5,738,180	-55.45%
Cumulative(2/1-29/1)	97,739,669	83,728,726	-14,010,943	-14.33%
Cumulative(2/1-29/1)	97,739,669	83,728,726	-14,010,943	-14.33%

2- NO. OF SHARES TRADED

	2018	2019	NET CHANGE	CHANGE (%)
Daily	6,859,450	3,944,073	-2,915,377	-42.50%
Cumulative(2/1-29/1)	84,066,072	59,198,140	-24,867,932	-29.58%
Cumulative(2/1-29/1)	84,066,072	59,198,140	-24,867,932	-29.58%

3- NO. OF TRANSACTIONS

	2018	2019	NET CHANGE	CHANGE (%)
Daily	3,315	1,708	-1,607	-48.48%
Cumulative(2/1-29/1)	41,127	31,790	-9,337	-22.70%
Cumulative(2/1-29/1)	41,127	31,790	-9,337	-22.70%

4- SOME FINANCIAL RATIOS FOR THE ASE (29/1/2019)

SECTOR	P/E	P/BV	DIVIDEND YIELD (%)	TURNOVER (%)
FINANCIAL	17.626	1.105	4.948	0.066
SERVICES	16.656	1.216	5.407	0.017
INDUSTRY	55.762	1.347	3.400	0.100
OVERALL	18.695	1.187	4.821	0.059

5- STOCK PRICE INDEX WEIGHTED BY FREE FLOAT MARKET CAPITALIZATION (1999=1000)

	MONDAY 28/01/2019	TUESDAY 29/01/2019	% CHANGE	
			DAY BEFORE	YTD
GENERAL	1945.7	1950.7	0.26%	2.19%
FINANCIAL	2673.4	2686.2	0.48%	1.26%
SERVICES	1313.7	1311.4	-0.17%	2.47%
INDUSTRY	1945.4	1943.9	-0.07%	3.25%

6- STOCK PRICE INDEX WEIGHTED BY MARKET CAPITALIZATION (1991=1000)

	MONDAY 28/01/2019	TUESDAY 29/01/2019	% CHANGE	
			DAY BEFORE	YTD
GENERAL	3879.2	3885.8	0.17%	2.34%
BANKS	8299.2	8321.7	0.27%	0.92%
INSURANCE	1363.6	1361.5	-0.16%	-1.09%
SERVICES	820.3	820.3	0.00%	2.95%
INDUSTRY	2460.2	2460.3	0.00%	6.44%

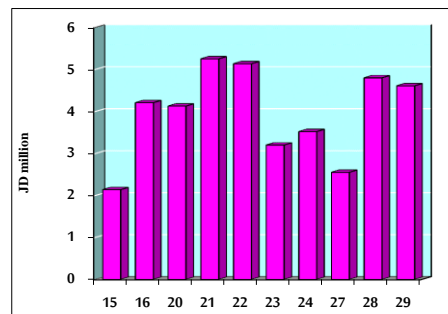
7- STOCK PRICE MARKET INDEX WEIGHTED BY FREE FLOAT MARKET CAP. (2012=1000)

	MONDAY 28/01/2019	TUESDAY 29/01/2019	% CHANGE	
			DAY BEFORE	YTD
FIRST MARKET	1030.4	1033.7	0.32%	2.22%
SECOND MARKET	862.0	862.8	0.10%	3.75%

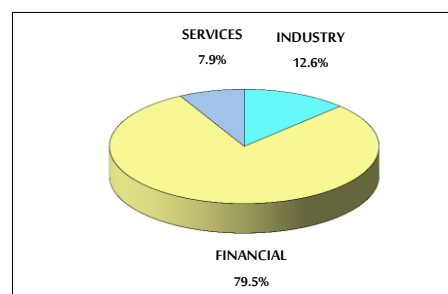
8- MARKET CAPITALIZATION (JD)

ASE MARKET CAPITALIZATION	16,391,048,512	16,427,318,353	0.22%	1.89%
---------------------------	----------------	----------------	-------	-------

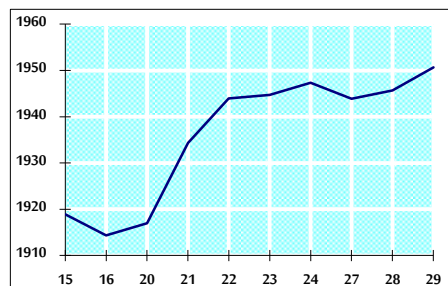
VALUE TRADED FROM 15/1 TO 29/1/2019



VALUE TRADED BY SECTOR TUESDAY 29/1/2019



GENERAL FREE FLOAT PRICE INDEX FROM 15/1 TO 29/1/2019



GENERAL PRICE INDEX FROM 15/1 TO 29/1/2019

