

Daily Summary for Amman Stock Exchange

1- VALUE TRADED (JD)

	2018	2019	NET CHANGE	CHANGE (%)
Daily	3,195,132	2,508,091	-687,041	-21.50%
Cumulative(2/1-2/1)	3,195,132	2,508,091	-687,041	-21.50%
Cumulative(2/1-2/1)	3,195,132	2,508,091	-687,041	-21.50%

2- NO. OF SHARES TRADED

	2018	2019	NET CHANGE	CHANGE (%)
Daily	3,184,029	2,663,999	-520,030	-16.33%
Cumulative(2/1-2/1)	3,184,029	2,663,999	-520,030	-16.33%
Cumulative(2/1-2/1)	3,184,029	2,663,999	-520,030	-16.33%

3- NO. OF TRANSACTIONS

	2018	2019	NET CHANGE	CHANGE (%)
Daily	1,893	1,358	-535	-28.26%
Cumulative(2/1-2/1)	1,893	1,358	-535	-28.26%
Cumulative(2/1-2/1)	1,893	1,358	-535	-28.26%

4- SOME FINANCIAL RATIOS FOR THE ASE (2/1/2019)

SECTOR	P/E	P/BV	DIVIDEND YIELD (%)	TURNOVER (%)
FINANCIAL	17.384	1.090	5.017	0.045
SERVICES	16.430	1.200	5.481	0.026
INDUSTRY	53.438	1.291	3.548	0.037
OVERALL	18.275	1.160	4.932	0.040

5- STOCK PRICE INDEX WEIGHTED BY FREE FLOAT MARKET CAPITALIZATION (1999=1000)

	MONDAY 31/12/2018	WEDNESDAY 02/01/2019	% CHANGE	
			DAY BEFORE	YTD
GENERAL	1908.8	1917.2	0.44%	0.44%
FINANCIAL	2652.7	2656.4	0.14%	0.14%
SERVICES	1279.8	1284.3	0.35%	0.35%
INDUSTRY	1882.7	1912.3	1.57%	1.57%

6- STOCK PRICE INDEX WEIGHTED BY MARKET CAPITALIZATION (1991=1000)

	MONDAY 31/12/2018	WEDNESDAY 02/01/2019	% CHANGE	
			DAY BEFORE	YTD
GENERAL	3797.1	3801.1	0.10%	0.10%
BANKS	8246.0	8216.8	-0.35%	-0.35%
INSURANCE	1376.5	1378.1	0.12%	0.12%
SERVICES	796.8	803.5	0.83%	0.83%
INDUSTRY	2311.4	2334.6	1.01%	1.01%

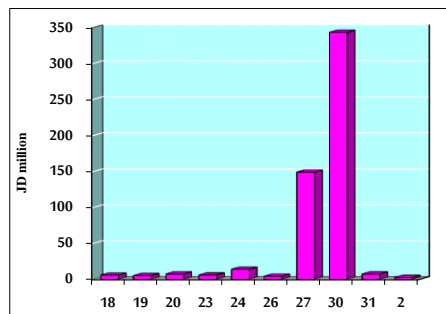
7- STOCK PRICE MARKET INDEX WEIGHTED BY FREE FLOAT MARKET CAP. (2012=1000)

	MONDAY 31/12/2018	WEDNESDAY 02/01/2019	% CHANGE	
			DAY BEFORE	YTD
FIRST MARKET	1011.3	1014.9	0.35%	0.35%
SECOND MARKET	831.6	841.2	1.15%	1.15%

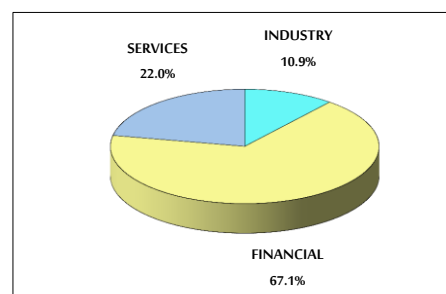
8- MARKET CAPITALIZATION (JD)

ASE MARKET CAPITALIZATION	16,122,694,186	16,139,097,649	0.10%	0.10%
---------------------------	----------------	----------------	-------	-------

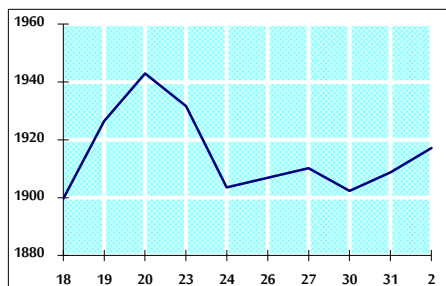
VALUE TRADED FROM 18/12/2018 TO 2/1/2019



VALUE TRADED BY SECTOR WEDNESDAY 2/1/2019



GENERAL FREE FLOAT PRICE INDEX FROM 18/12/2018 TO 2/1/2019



GENERAL PRICE INDEX FROM 18/12/2018 TO 2/1/2019

