

## Daily Summary for Amman Stock Exchange

### 1- VALUE TRADED (JD)

	2017	2018	NET CHANGE	CHANGE (%)
Daily	20,336,239	6,091,557	-14,244,682	-70.05%
Cumulative(2/12-16/12)	75,705,599	43,981,957	-31,723,642	-41.90%
Cumulative(2/1-16/12)	2,877,207,290	1,771,228,819	-1,105,978,471	-38.44%

### 2- NO. OF SHARES TRADED

	2017	2018	NET CHANGE	CHANGE (%)
Daily	11,118,153	3,937,914	-7,180,239	-64.58%
Cumulative(2/12-16/12)	62,821,445	32,409,217	-30,412,228	-48.41%
Cumulative(2/1-16/12)	1,670,119,703	1,091,029,746	-579,089,957	-34.67%

### 3- NO. OF TRANSACTIONS

	2017	2018	NET CHANGE	CHANGE (%)
Daily	2,152	1,495	-657	-30.53%
Cumulative(2/12-16/12)	22,768	15,935	-6,833	-30.01%
Cumulative(2/1-16/12)	698,571	492,073	-206,498	-29.56%

### 4- SOME FINANCIAL RATIOS FOR THE ASE (16/12/2018)

SECTOR	P/E	P/BV	DIVIDEND YIELD (%)	TURNOVER (%)
FINANCIAL	16.754	1.052	5.200	0.035
SERVICES	15.921	1.181	5.597	0.058
INDUSTRY	51.911	1.230	3.706	0.170
OVERALL	17.274	1.107	5.143	0.058

### 5- STOCK PRICE INDEX WEIGHTED BY FREE FLOAT MARKET CAPITALIZATION (1999=1000)

	THURSDAY 13/12/2018	SUNDAY 16/12/2018	% CHANGE	
			DAY BEFORE	YTD
GENERAL	1829.2	1843.0	0.76%	-13.34%
FINANCIAL	2535.8	2536.9	0.04%	-11.96%
SERVICES	1261.5	1271.5	0.80%	-12.29%
INDUSTRY	1789.6	1841.9	2.92%	-17.39%

### 6- STOCK PRICE INDEX WEIGHTED BY MARKET CAPITALIZATION (1991=1000)

	THURSDAY 13/12/2018	SUNDAY 16/12/2018	% CHANGE	
			DAY BEFORE	YTD
GENERAL	3652.7	3664.1	0.31%	-8.61%
BANKS	7923.2	7903.8	-0.24%	-5.18%
INSURANCE	1377.1	1377.7	0.04%	9.24%
SERVICES	791.4	797.4	0.75%	-14.60%
INDUSTRY	2177.5	2216.3	1.78%	-15.28%

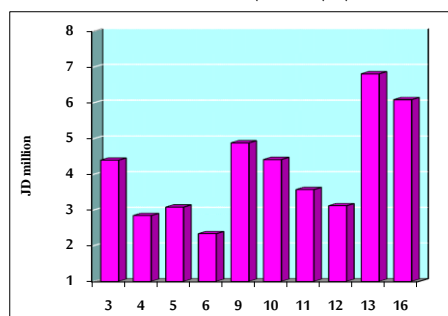
### 7- STOCK PRICE MARKET INDEX WEIGHTED BY FREE FLOAT MARKET CAP. (2012=1000)

	THURSDAY 13/12/2018	SUNDAY 16/12/2018	% CHANGE	
			DAY BEFORE	YTD
FIRST MARKET	960.4	968.2	0.82%	-14.70%
SECOND MARKET	841.5	845.6	0.48%	-7.66%

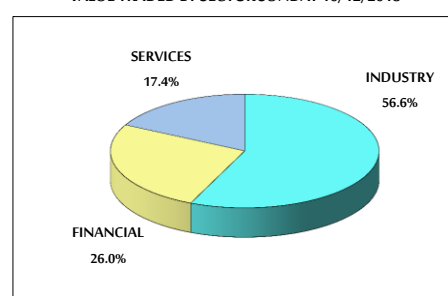
### 8- MARKET CAPITALIZATION (JD)

ASE MARKET CAPITALIZATION	15,547,368,074	15,592,267,984	0.29%	-8.08%
---------------------------	----------------	----------------	-------	--------

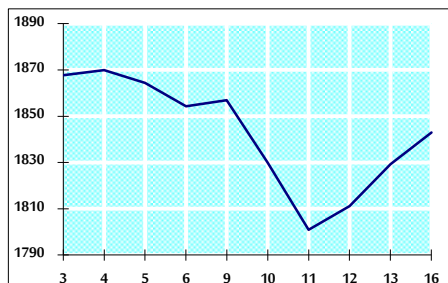
VALUE TRADED FROM 3/12 TO 16/12/2018



VALUE TRADED BY SECTOR SUNDAY 16/12/2018



GENERAL FREE FLOAT PRICE INDEX FROM 3/12 TO 16/12/2018



GENERAL PRICE INDEX FROM 3/12 TO 16/12/2018

