

Daily Summary for Amman Stock Exchange

VALUE TRADED (JD)

	2023	2024	NET CHANGE	CHANGE (%)
Daily	3,781,221	1,827,559	-1,953,662	-51.67%
Cumulative (1/4-8/4)	29,348,909	18,277,066	-11,071,843	-37.72%
Cumulative (2/1-8/4)	563,487,206	303,650,774	-259,836,432	-46.11%

NO. OF SHARES TRADED

	2023	2024	NET CHANGE	CHANGE (%)
Daily	2,257,161	2,607,249	350,088	15.51%
Cumulative (1/4-8/4)	20,537,738	15,023,717	-5,514,021	-26.85%
Cumulative (2/1-8/4)	361,107,775	245,714,599	-115,393,176	-31.96%

NO. OF TRANSACTIONS

	2023	2024	NET CHANGE	CHANGE (%)
Daily	1,938	1,361	-577	-29.77%
Cumulative (1/4-8/4)	12,552	9,608	-2,944	-23.45%
Cumulative (2/1-8/4)	226,559	159,341	-67,218	-29.67%

SOME FINANCIAL RATIOS FOR THE ASE (8/4/2024)

SECTOR	P/E	P/BV	DIVIDEND YIELD (%)	TURNOVER (%)
FINANCIAL	8.986	0.767	5.863	0.047
SERVICES	11.750	1.314	5.669	0.028
INDUSTRY	7.395	1.425	0.357	0.041
OVERALL	8.191	0.976	4.115	0.043

STOCK PRICE INDEX WEIGHTED BY FREE FLOAT MARKET CAPITALIZATION (1999=1000)

	SUNDAY 07/04/2024	MONDAY 08/04/2024	% CHANGE	
			DAY BEFORE	YTD
GENERAL	2449.3	2437.2	-0.50%	0.25%
FINANCIAL	2654.9	2660.8	0.22%	-2.50%
SERVICES	1749.3	1704.0	-2.59%	3.65%
INDUSTRY	4854.6	4886.7	0.66%	3.56%

STOCK PRICE INDEX WEIGHTED BY FREE FLOAT MARKET CAPITALIZATION ASE20 (2014=1000)

	1324.9	1318.6	-0.47%	0.75%
--	--------	--------	--------	-------

Total Return Index ASETR (2021=1074)

	1550.0	1555.6	0.36%	4.51%
--	--------	--------	-------	-------

STOCK PRICE INDEX WEIGHTED BY MARKET CAPITALIZATION (1991=1000)

	SUNDAY 07/04/2024	MONDAY 08/04/2024	% CHANGE	
			DAY BEFORE	YTD
GENERAL	4446.9	4450.3	0.07%	0.77%
BANKS	6593.0	6608.7	0.24%	-1.88%
INSURANCE	1311.0	1313.7	0.20%	2.24%
SERVICES	893.5	892.4	-0.13%	1.56%
INDUSTRY	5949.5	5944.6	-0.08%	4.17%

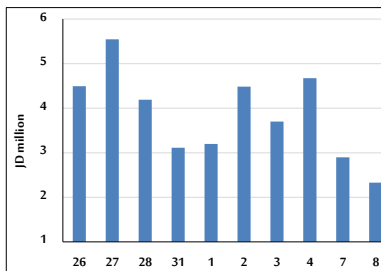
STOCK PRICE MARKET INDEX WEIGHTED BY FREE FLOAT MARKET CAP. (2012=1000)

	SUNDAY 07/04/2024	MONDAY 08/04/2024	% CHANGE	
			DAY BEFORE	YTD
FIRST MARKET	1374.9	1367.5	-0.53%	0.63%
SECOND MARKET	823.7	829.9	0.75%	-3.97%

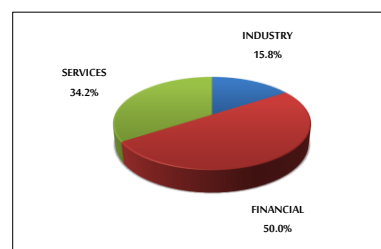
MARKET CAPITALIZATION (JD)

	16,912,966,957	16,926,090,802	0.08%	-0.08%
--	----------------	----------------	-------	--------

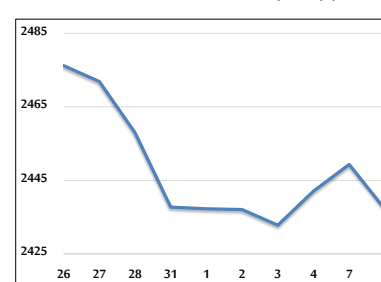
VALUE TRADED FROM 26/3 TO 8/4/2024



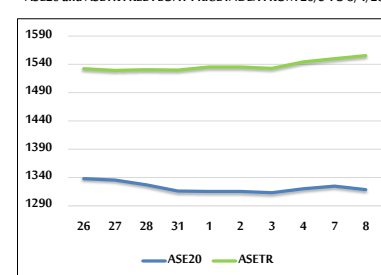
VALUE TRADED BY SECTOR MONDAY 8/4/2024



GENERAL FREE FLOAT PRICE INDEX FROM 26/3 TO 8/4/2024



ASE20 and ASETR FREE FLOAT PRICE INDEX FROM 26/3 TO 8/4/2024



STOCK PRICE INDEX FROM 26/3 TO 8/4/2024

