

## Daily Summary for Amman Stock Exchange

### VALUE TRADED (JD)

	2023	2024	NET CHANGE	CHANGE (%)
Daily	10,522,772	10,539,590	16,818	0.16%
Cumulative (1/4-25/4)	94,548,025	80,398,852	-14,149,173	-14.97%
Cumulative (2/1-25/4)	628,686,322	365,772,560	-262,913,762	-41.82%

### NO. OF SHARES TRADED

	2023	2024	NET CHANGE	CHANGE (%)
Daily	5,290,783	5,302,144	11,361	0.21%
Cumulative (1/4-25/4)	55,678,040	51,693,412	-3,984,628	-7.16%
Cumulative (2/1-25/4)	396,248,077	282,384,294	-113,863,783	-28.74%

### NO. OF TRANSACTIONS

	2023	2024	NET CHANGE	CHANGE (%)
Daily	2,743	2,043	-700	-25.52%
Cumulative (1/4-25/4)	37,391	36,200	-1,191	-3.19%
Cumulative (2/1-25/4)	251,398	185,933	-65,465	-26.04%

### SOME FINANCIAL RATIOS FOR THE ASE (25/4/2024)

SECTOR	P/E	P/BV	DIVIDEND YIELD (%)	TURNOVER (%)
FINANCIAL	8.763	0.749	6.004	0.027
SERVICES	11.667	1.305	5.926	0.080
INDUSTRY	7.777	1.499	5.786	0.438
OVERALL	8.238	0.982	6.206	0.087

### STOCK PRICE INDEX WEIGHTED BY FREE FLOAT MARKET CAPITALIZATION (1999=1000)

	WEDNESDAY 24/04/2024	THURSDAY 25/04/2024	% CHANGE	
			DAY BEFORE	YTD
GENERAL	2433.9	2440.7	0.28%	0.39%
FINANCIAL	2633.1	2636.4	0.13%	-3.39%
SERVICES	1690.8	1692.8	0.12%	2.97%
INDUSTRY	5068.9	5118.4	0.98%	8.47%

### STOCK PRICE INDEX WEIGHTED BY FREE FLOAT MARKET CAPITALIZATION ASE20 (2014=1000)

	1316.4	1320.4	0.31%	0.88%
--	--------	--------	-------	-------

### Total Return Index ASETR (2021=1074)

	1555.7	1563.9	0.52%	5.07%
--	--------	--------	-------	-------

### STOCK PRICE INDEX WEIGHTED BY MARKET CAPITALIZATION (1991=1000)

	WEDNESDAY 24/04/2024	THURSDAY 25/04/2024	% CHANGE	
			DAY BEFORE	YTD
GENERAL	4452.2	4475.6	0.53%	1.34%
BANKS	6429.4	6453.5	0.37%	-4.19%
INSURANCE	1321.9	1321.9	0.00%	2.88%
SERVICES	890.7	891.0	0.04%	1.41%
INDUSTRY	6170.3	6223.5	0.86%	9.06%

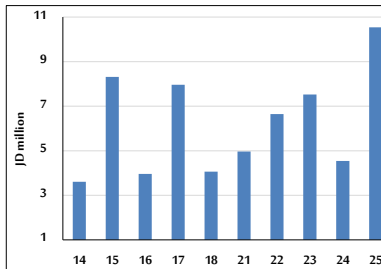
### STOCK PRICE MARKET INDEX WEIGHTED BY FREE FLOAT MARKET CAP. (2012=1000)

	WEDNESDAY 24/04/2024	THURSDAY 25/04/2024	% CHANGE	
			DAY BEFORE	YTD
FIRST MARKET	1365.6	1369.6	0.30%	0.79%
SECOND MARKET	821.9	820.9	-0.12%	-5.01%

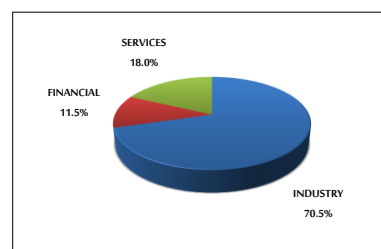
### MARKET CAPITALIZATION (JD)

	16,924,067,633	17,013,155,540	0.53%	0.44%
--	----------------	----------------	-------	-------

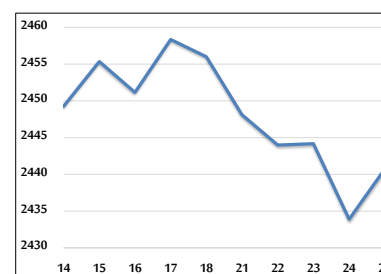
### VALUE TRADED FROM 14/4 TO 25/4/2024



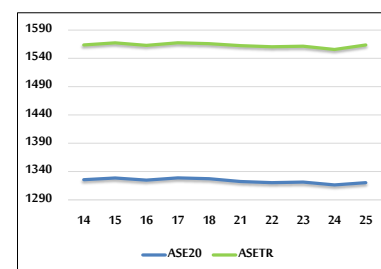
### VALUE TRADED BY SECTOR THURSDAY 25/4/2024



### GENERAL FREE FLOAT PRICE INDEX FROM 14/4 TO 25/4/2024



### ASE20 and ASETR FREE FLOAT PRICE INDEX FROM 14/4 TO 25/4/2024



### STOCK PRICE INDEX FROM 14/4 TO 25/4/2024

