

Daily Summary for Amman Stock Exchange

VALUE TRADED (JD)

	2023	2024	NET CHANGE	CHANGE (%)
Daily	5,977,606	3,690,622	-2,286,984	-38.26%
Cumulative (3/3-28/3)	143,754,907	77,179,811	-66,575,096	-46.31%
Cumulative (2/1-28/3)	517,829,543	282,760,019	-235,069,524	-45.40%

NO. OF SHARES TRADED

	2023	2024	NET CHANGE	CHANGE (%)
Daily	4,755,914	2,337,521	-2,418,393	-50.85%
Cumulative (3/3-28/3)	99,700,672	58,575,278	-41,125,394	-41.25%
Cumulative (2/1-28/3)	324,644,886	229,026,325	-95,618,561	-29.45%

NO. OF TRANSACTIONS

	2023	2024	NET CHANGE	CHANGE (%)
Daily	2,656	2,059	-597	-22.48%
Cumulative (3/3-28/3)	55,545	40,350	-15,195	-27.36%
Cumulative (2/1-28/3)	208,960	148,046	-60,914	-29.15%

SOME FINANCIAL RATIOS FOR THE ASE (28/3/2024)

SECTOR	P/E	P/BV	DIVIDEND YIELD (%)	TURNOVER (%)
FINANCIAL	9.121	0.783	5.776	0.029
SERVICES	11.645	1.345	6.283	0.067
INDUSTRY	7.249	1.532	7.463	0.035
OVERALL	8.248	1.006	6.721	0.037

STOCK PRICE INDEX WEIGHTED BY FREE FLOAT MARKET CAPITALIZATION (1999=1000)

	WEDNESDAY 27/03/2024	THURSDAY 28/03/2024	% CHANGE	
			DAY BEFORE	YTD
GENERAL	2471.9	2458.0	-0.56%	1.10%
FINANCIAL	2711.7	2679.3	-1.20%	-1.82%
SERVICES	1733.5	1747.5	0.81%	6.29%
INDUSTRY	4796.3	4793.7	-0.05%	1.59%

STOCK PRICE INDEX WEIGHTED BY FREE FLOAT MARKET CAPITALIZATION ASE20 (2014=1000)

	1335.5	1327.2	-0.62%	1.40%
--	--------	--------	--------	-------

Total Return Index ASETR (2021=1074)

	1529.3	1530.5	0.08%	2.83%
--	--------	--------	-------	-------

STOCK PRICE INDEX WEIGHTED BY MARKET CAPITALIZATION (1991=1000)

	WEDNESDAY 27/03/2024	THURSDAY 28/03/2024	% CHANGE	
			DAY BEFORE	YTD
GENERAL	4500.2	4484.2	-0.35%	1.54%
BANKS	6785.7	6741.8	-0.65%	0.09%
INSURANCE	1307.2	1307.9	0.05%	1.79%
SERVICES	897.5	898.1	0.07%	2.22%
INDUSTRY	5901.2	5895.7	-0.09%	3.31%

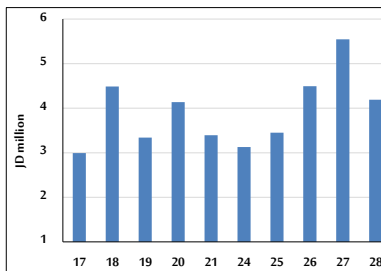
STOCK PRICE MARKET INDEX WEIGHTED BY FREE FLOAT MARKET CAP. (2012=1000)

	WEDNESDAY 27/03/2024	THURSDAY 28/03/2024	% CHANGE	
			DAY BEFORE	YTD
FIRST MARKET	1386.2	1377.4	-0.63%	1.36%
SECOND MARKET	835.3	835.0	-0.04%	-3.39%

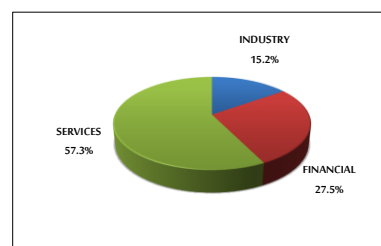
MARKET CAPITALIZATION (JD)

	17,157,831,066	17,102,151,811	-0.32%	0.96%
--	----------------	----------------	--------	-------

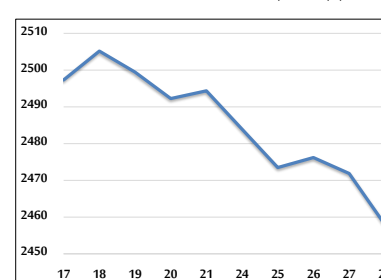
VALUE TRADED FROM 17/3 TO 28/3/2024



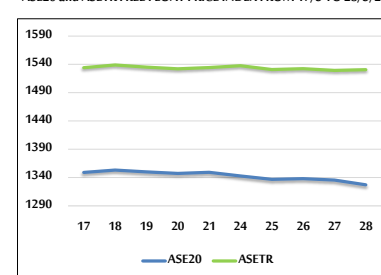
VALUE TRADED BY SECTOR THURSDAY 28/3/2024



GENERAL FREE FLOAT PRICE INDEX FROM 17/3 TO 28/3/2024



ASE20 and ASETR FREE FLOAT PRICE INDEX FROM 17/3 TO 28/3/2024



STOCK PRICE INDEX FROM 17/3 TO 28/3/2024

