

Daily Summary for Amman Stock Exchange

VALUE TRADED (JD)

	2023	2024	NET CHANGE	CHANGE (%)
Daily	8,562,658	2,115,653	-6,447,005	-75.29%
Cumulative (1/2-12/2)	79,026,106	30,833,147	-48,192,959	-60.98%
Cumulative (2/1-12/2)	268,775,882	137,075,320	-131,700,562	-49.00%

NO. OF SHARES TRADED

	2023	2024	NET CHANGE	CHANGE (%)
Daily	4,361,069	1,626,186	-2,734,883	-62.71%
Cumulative (1/2-12/2)	48,951,176	21,838,103	-27,113,073	-55.39%
Cumulative (2/1-12/2)	160,895,438	114,971,094	-45,924,344	-28.54%

NO. OF TRANSACTIONS

	2023	2024	NET CHANGE	CHANGE (%)
Daily	3,852	1,726	-2,126	-55.19%
Cumulative (1/2-12/2)	33,563	16,094	-17,469	-52.05%
Cumulative (2/1-12/2)	111,234	75,566	-35,668	-32.07%

SOME FINANCIAL RATIOS FOR THE ASE (12/2/2024)

SECTOR	P/E	P/BV	DIVIDEND YIELD (%)	TURNOVER (%)
FINANCIAL	8.058	0.821	5.574	0.018
SERVICES	11.996	1.355	6.481	0.048
INDUSTRY	6.916	1.564	7.410	0.031
OVERALL	7.590	1.047	6.610	0.026

STOCK PRICE INDEX WEIGHTED BY FREE FLOAT MARKET CAPITALIZATION (1999=1000)

	SUNDAY 11/02/2024	MONDAY 12/02/2024	% CHANGE	
			DAY BEFORE	YTD
GENERAL	2478.8	2477.6	-0.05%	1.91%
FINANCIAL	2734.9	2731.8	-0.11%	0.10%
SERVICES	1710.0	1709.2	-0.05%	3.96%
INDUSTRY	4880.0	4883.6	0.07%	3.50%

STOCK PRICE INDEX WEIGHTED BY FREE FLOAT MARKET CAPITALIZATION ASE20 (2014=1000)

	1340.0	1339.1	-0.07%	2.31%
--	--------	--------	--------	-------

Total Return Index ASETR (2021=1074)

	1523.9	1522.9	-0.07%	2.31%
--	--------	--------	--------	-------

STOCK PRICE INDEX WEIGHTED BY MARKET CAPITALIZATION (1991=1000)

	SUNDAY 11/02/2024	MONDAY 12/02/2024	% CHANGE	
			DAY BEFORE	YTD
GENERAL	4499.5	4501.9	0.06%	1.94%
BANKS	6748.5	6742.9	-0.08%	0.11%
INSURANCE	1302.0	1307.3	0.40%	1.74%
SERVICES	897.9	898.5	0.07%	2.26%
INDUSTRY	5943.3	5956.6	0.22%	4.38%

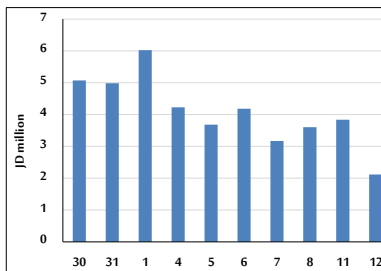
STOCK PRICE MARKET INDEX WEIGHTED BY FREE FLOAT MARKET CAP. (2012=1000)

	SUNDAY 11/02/2024	MONDAY 12/02/2024	% CHANGE	
			DAY BEFORE	YTD
FIRST MARKET	1389.2	1388.4	-0.06%	2.16%
SECOND MARKET	850.1	849.9	-0.02%	-1.66%

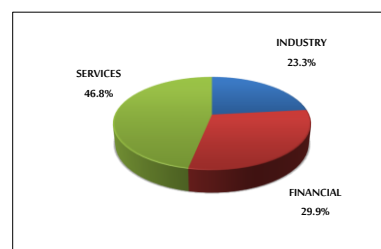
MARKET CAPITALIZATION (JD)

	17,187,662,022	17,189,706,455	0.01%	1.48%
--	----------------	----------------	-------	-------

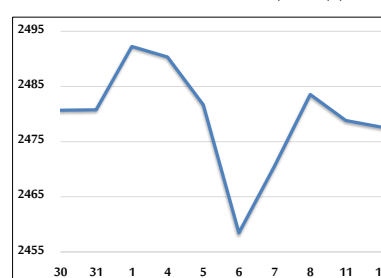
VALUE TRADED FROM 30/1 TO 12/2/2024



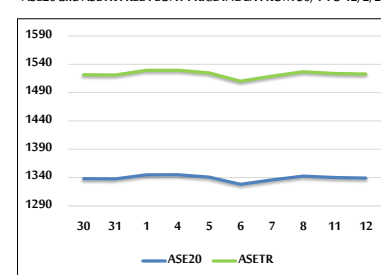
VALUE TRADED BY SECTOR MONDAY 12/2/2024



GENERAL FREE FLOAT PRICE INDEX FROM 30/1 TO 12/2/2024



ASE20 and ASETR FREE FLOAT PRICE INDEX FROM 30/1 TO 12/2/2024



STOCK PRICE INDEX FROM 30/1 TO 12/2/2024

