

Daily Summary for Amman Stock Exchange

VALUE TRADED (JD)

	2023	2024	NET CHANGE	CHANGE (%)
Daily	10,296,845	4,259,067	-6,037,778	-58.64%
Cumulative (1/2-29/2)	184,324,860	99,338,035	-84,986,825	-46.11%
Cumulative (2/1-29/2)	374,074,636	205,580,208	-168,494,428	-45.04%

NO. OF SHARES TRADED

	2023	2024	NET CHANGE	CHANGE (%)
Daily	5,514,320	4,304,052	-1,210,268	-21.95%
Cumulative (1/2-29/2)	112,999,952	77,318,056	-35,681,896	-31.58%
Cumulative (2/1-29/2)	224,944,214	170,451,047	-54,493,167	-24.23%

NO. OF TRANSACTIONS

	2023	2024	NET CHANGE	CHANGE (%)
Daily	3,720	2,432	-1,288	-34.62%
Cumulative (1/2-29/2)	75,744	48,224	-27,520	-36.33%
Cumulative (2/1-29/2)	153,415	107,696	-45,719	-29.80%

SOME FINANCIAL RATIOS FOR THE ASE (29/2/2024)

SECTOR	P/E	P/BV	DIVIDEND YIELD (%)	TURNOVER (%)
FINANCIAL	9.056	0.779	5.778	0.052
SERVICES	11.550	1.344	6.538	0.141
INDUSTRY	7.369	1.562	7.427	0.044
OVERALL	8.242	1.010	6.731	0.069

STOCK PRICE INDEX WEIGHTED BY FREE FLOAT MARKET CAPITALIZATION (1999=1000)

	WEDNESDAY 28/02/2024	THURSDAY 29/02/2024	% CHANGE	
			DAY BEFORE	YTD
GENERAL	2466.9	2467.3	0.02%	1.48%
FINANCIAL	2713.8	2714.4	0.02%	-0.54%
SERVICES	1702.3	1702.4	0.00%	3.55%
INDUSTRY	4888.3	4885.1	-0.07%	3.53%

STOCK PRICE INDEX WEIGHTED BY FREE FLOAT MARKET CAPITALIZATION ASE20 (2014=1000)

	1333.0	1332.5	-0.04%	1.81%
--	--------	--------	--------	-------

Total Return Index ASETR (2021=1074)

	1516.0	1515.4	-0.04%	1.81%
--	--------	--------	--------	-------

STOCK PRICE INDEX WEIGHTED BY MARKET CAPITALIZATION (1991=1000)

	WEDNESDAY 28/02/2024	THURSDAY 29/02/2024	% CHANGE	
			DAY BEFORE	YTD
GENERAL	4479.7	4481.6	0.04%	1.48%
BANKS	6674.4	6676.8	0.04%	-0.87%
INSURANCE	1306.5	1306.1	-0.03%	1.65%
SERVICES	892.6	896.1	0.39%	1.98%
INDUSTRY	5973.3	5969.7	-0.06%	4.61%

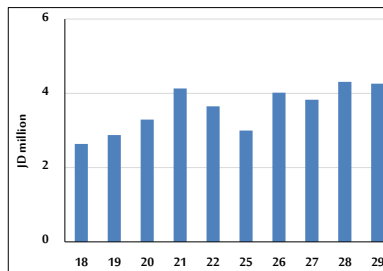
STOCK PRICE MARKET INDEX WEIGHTED BY FREE FLOAT MARKET CAP. (2012=1000)

	WEDNESDAY 28/02/2024	THURSDAY 29/02/2024	% CHANGE	
			DAY BEFORE	YTD
FIRST MARKET	1383.0	1382.7	-0.02%	1.75%
SECOND MARKET	844.1	846.9	0.34%	-2.00%

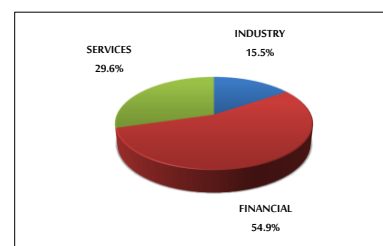
MARKET CAPITALIZATION (JD)

	17,088,640,130	17,088,677,554	0.00%	0.88%
--	----------------	----------------	-------	-------

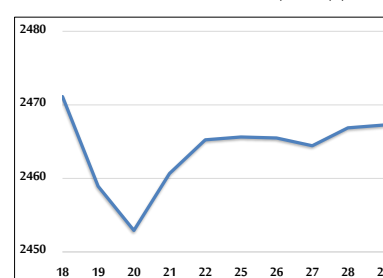
VALUE TRADED FROM 18/2 TO 29/2/2024



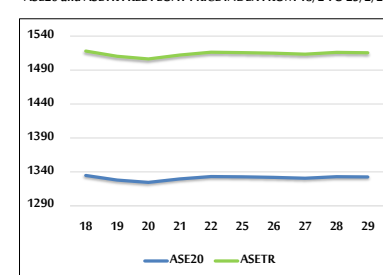
VALUE TRADED BY SECTOR THURSDAY 29/2/2024



GENERAL FREE FLOAT PRICE INDEX FROM 18/2 TO 29/2/2024



ASE20 and ASETR FREE FLOAT PRICE INDEX FROM 18/2 TO 29/2/2024



STOCK PRICE INDEX FROM 18/2 TO 29/2/2024

