

Daily Summary for Amman Stock Exchange

VALUE TRADED (JD)

	2022	2023	NET CHANGE	CHANGE (%)
Daily	3,386,740	5,759,623	2,372,883	70.06%
Cumulative (3/12-21/12)	67,079,695	70,326,445	3,246,750	4.84%
Cumulative (2/1-21/12)	1,878,515,038	1,427,888,830	-450,626,208	-23.99%

NO. OF SHARES TRADED

	2022	2023	NET CHANGE	CHANGE (%)
Daily	2,611,328	7,902,658	5,291,330	202.63%
Cumulative (3/12-21/12)	59,973,137	63,536,503	3,563,366	5.94%
Cumulative (2/1-21/12)	1,135,750,597	1,090,736,753	-45,013,844	-3.96%

NO. OF TRANSACTIONS

	2022	2023	NET CHANGE	CHANGE (%)
Daily	1,930	3,087	1,157	59.95%
Cumulative (3/12-21/12)	34,235	37,015	2,780	8.12%
Cumulative (2/1-21/12)	726,418	671,102	-55,316	-7.61%

SOME FINANCIAL RATIOS FOR THE ASE (21/12/2023)

SECTOR	P/E	P/BV	DIVIDEND YIELD (%)	TURNOVER (%)
FINANCIAL	7.980	0.822	5.585	0.063
SERVICES	11.548	1.313	6.692	0.148
INDUSTRY	6.760	1.529	7.577	0.412
OVERALL	7.421	1.022	6.683	0.126

STOCK PRICE INDEX WEIGHTED BY FREE FLOAT MARKET CAPITALIZATION (1999=1000)

	WEDNESDAY 20/12/2023	THURSDAY 21/12/2023	% CHANGE	
			DAY BEFORE	YTD
GENERAL	2428.1	2425.1	-0.12%	-3.06%
FINANCIAL	2715.6	2712.1	-0.13%	0.74%
SERVICES	1637.9	1637.9	0.00%	-5.91%
INDUSTRY	4764.4	4756.3	-0.17%	-10.13%

STOCK PRICE INDEX WEIGHTED BY FREE FLOAT MARKET CAPITALIZATION ASE20 (2014=1000)

	1307.0	1304.6	-0.19%	-3.03%
--	--------	--------	--------	--------

Total Return Index ASETR (2021=1074)

	1486.4	1483.6	-0.19%	3.74%
--	--------	--------	--------	-------

STOCK PRICE INDEX WEIGHTED BY MARKET CAPITALIZATION (1991=1000)

	WEDNESDAY 20/12/2023	THURSDAY 21/12/2023	% CHANGE	
			DAY BEFORE	YTD
GENERAL	4423.1	4417.5	-0.13%	-6.61%
BANKS	6709.9	6699.9	-0.15%	-0.80%
INSURANCE	1281.4	1281.5	0.01%	-3.77%
SERVICES	883.1	883.6	0.06%	3.70%
INDUSTRY	5752.9	5743.9	-0.16%	-16.54%

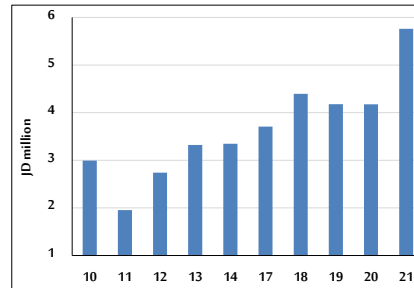
STOCK PRICE MARKET INDEX WEIGHTED BY FREE FLOAT MARKET CAP. (2012=1000)

	WEDNESDAY 20/12/2023	THURSDAY 21/12/2023	% CHANGE	
			DAY BEFORE	YTD
FIRST MARKET	1356.9	1354.8	-0.16%	-3.82%
SECOND MARKET	861.4	864.5	0.35%	9.63%

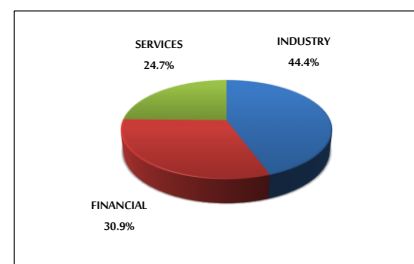
MARKET CAPITALIZATION (JD)

	16,957,249,853	16,939,130,966	-0.11%	-5.91%
--	----------------	----------------	--------	--------

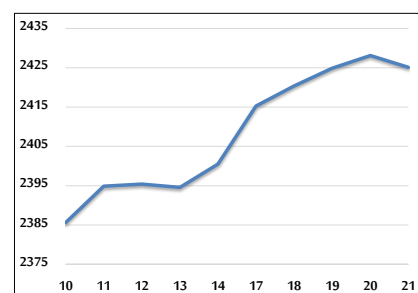
VALUE TRADED FROM 10/12 TO 21/12/2023



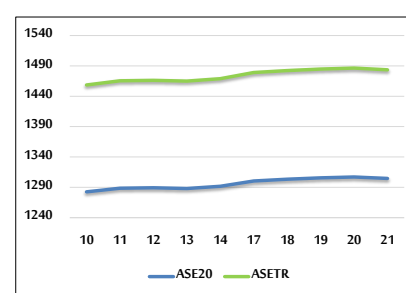
VALUE TRADED BY SECTOR THURSDAY 21/12/2023



GENERAL FREE FLOAT PRICE INDEX FROM 10/12 TO 21/12/2023



ASE20 and ASETR FREE FLOAT PRICE INDEX FROM 10/12 TO 21/12/2023



STOCK PRICE INDEX FROM 10/12 TO 21/12/2023

