

### Daily Summary for Amman Stock Exchange

VALUE TRADED (JD)

	2022	2023	NET CHANGE	CHANGE (%)
Daily	5,024,231	4,175,557	-848,674	-16.89%
Cumulative (3/12-20/12)	63,692,955	64,566,822	873,867	1.37%
Cumulative (2/1-20/12)	1,875,128,298	1,422,129,207	-452,999,091	-24.16%

NO. OF SHARES TRADED

	2022	2023	NET CHANGE	CHANGE (%)
Daily	5,468,310	4,088,179	-1,380,131	-25.24%
Cumulative (3/12-20/12)	57,361,809	55,633,845	-1,727,964	-3.01%
Cumulative (2/1-20/12)	1,133,139,269	1,082,834,095	-50,305,174	-4.44%

NO. OF TRANSACTIONS

	2022	2023	NET CHANGE	CHANGE (%)
Daily	2,123	2,939	816	38.44%
Cumulative (3/12-20/12)	32,305	33,928	1,623	5.02%
Cumulative (2/1-20/12)	724,488	668,015	-56,473	-7.79%

SOME FINANCIAL RATIOS FOR THE ASE (20/12/2023)

SECTOR	P/E	P/BV	DIVIDEND YIELD (%)	TURNOVER (%)
FINANCIAL	7.989	0.823	5.579	0.055
SERVICES	11.554	1.314	6.688	0.092
INDUSTRY	6.769	1.531	7.567	0.076
OVERALL	7.431	1.024	6.674	0.065

STOCK PRICE INDEX WEIGHTED BY FREE FLOAT MARKET CAPITALIZATION (1999=1000)

	TUESDAY 19/12/2023	WEDNESDAY 20/12/2023	% CHANGE	
			DAY BEFORE	YTD
GENERAL	2424.9	2428.1	0.13%	-2.94%
FINANCIAL	2708.0	2715.6	0.28%	0.87%
SERVICES	1636.8	1637.9	0.07%	-5.91%
INDUSTRY	4778.5	4764.4	-0.30%	-9.98%

STOCK PRICE INDEX WEIGHTED BY FREE FLOAT MARKET CAPITALIZATION ASE20 (2014=1000)

	1305.7	1307.0	0.10%	-2.85%
--	--------	--------	-------	--------

Total Return Index ASETR (2021=1074)

	1484.9	1486.4	0.10%	3.93%
--	--------	--------	-------	-------

STOCK PRICE INDEX WEIGHTED BY MARKET CAPITALIZATION (1991=1000)

	TUESDAY 19/12/2023	WEDNESDAY 20/12/2023	% CHANGE	
			DAY BEFORE	YTD
GENERAL	4427.3	4423.1	-0.10%	-6.50%
BANKS	6681.5	6709.9	0.43%	-0.65%
INSURANCE	1282.0	1281.4	-0.05%	-3.78%
SERVICES	880.7	883.1	0.27%	3.64%
INDUSTRY	5805.3	5752.9	-0.90%	-16.41%

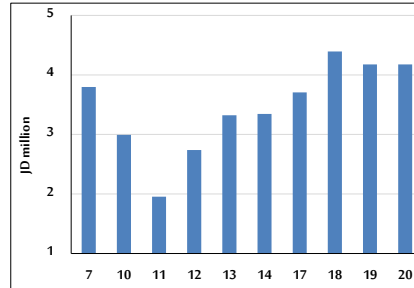
STOCK PRICE MARKET INDEX WEIGHTED BY FREE FLOAT MARKET CAP. (2012=1000)

	TUESDAY 19/12/2023	WEDNESDAY 20/12/2023	% CHANGE	
			DAY BEFORE	YTD
FIRST MARKET	1355.2	1356.9	0.12%	-3.67%
SECOND MARKET	859.9	861.4	0.18%	9.24%

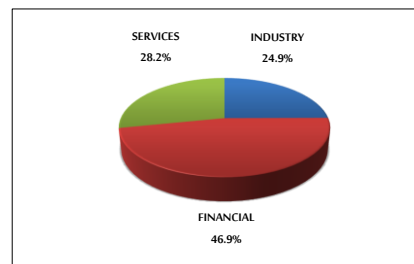
MARKET CAPITALIZATION (JD)

	16,970,706,143	16,957,249,853	-0.08%	-5.81%
--	----------------	----------------	--------	--------

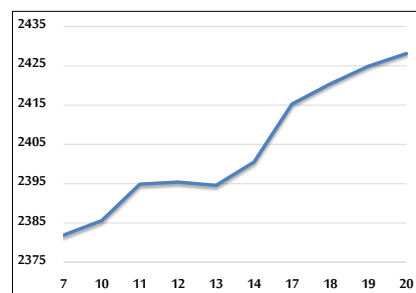
VALUE TRADED FROM 7/12 TO 20/12/2023



VALUE TRADED BY SECTOR WEDNESDAY 20/12/2023



GENERAL FREE FLOAT PRICE INDEX FROM 7/12 TO 20/12/2023



ASE20 and ASETR FREE FLOAT PRICE INDEX FROM 7/12 TO 20/12/2023



STOCK PRICE INDEX FROM 7/12 TO 20/12/2023

