

Daily Summary for Amman Stock Exchange

VALUE TRADED (JD)

	2022	2023	NET CHANGE	CHANGE (%)
Daily	7,519,743	4,264,929	-3,254,814	-43.28%
Cumulative (1/10-12/10)	55,401,771	52,835,336	-2,566,435	-4.63%
Cumulative (2/1-12/10)	1,623,491,857	1,227,386,011	-396,105,846	-24.40%

NO. OF SHARES TRADED

	2022	2023	NET CHANGE	CHANGE (%)
Daily	4,562,104	4,577,487	15,383	0.34%
Cumulative (1/10-12/10)	42,551,311	56,078,583	13,527,272	31.79%
Cumulative (2/1-12/10)	930,921,725	895,063,360	-35,858,365	-3.85%

NO. OF TRANSACTIONS

	2022	2023	NET CHANGE	CHANGE (%)
Daily	2,856	2,534	-322	-11.27%
Cumulative (1/10-12/10)	28,146	28,504	358	1.27%
Cumulative (2/1-12/10)	609,800	560,727	-49,073	-8.05%

SOME FINANCIAL RATIOS FOR THE ASE (12/10/2023)

SECTOR	P/E	P/BV	DIVIDEND YIELD (%)	TURNOVER (%)
FINANCIAL	8.837	0.806	5.719	0.045
SERVICES	12.082	1.335	6.581	0.076
INDUSTRY	5.448	1.598	7.252	0.210
OVERALL	7.067	1.030	6.634	0.073

STOCK PRICE INDEX WEIGHTED BY FREE FLOAT MARKET CAPITALIZATION (1999=1000)

	WEDNESDAY 11/10/2023	THURSDAY 12/10/2023	% CHANGE	
			DAY BEFORE	YTD
GENERAL	2420.7	2433.7	0.54%	-2.72%
FINANCIAL	2670.2	2678.5	0.31%	-0.51%
SERVICES	1681.1	1690.8	0.58%	-2.87%
INDUSTRY	4793.5	4835.2	0.87%	-8.64%

STOCK PRICE INDEX WEIGHTED BY FREE FLOAT MARKET CAPITALIZATION ASE20 (2014=1000)

	1301.1	1308.4	0.56%	-2.74%
--	--------	--------	-------	--------

Total Return Index ASETR (2021=1074)

	1479.7	1488.0	0.56%	4.05%
--	--------	--------	-------	-------

STOCK PRICE INDEX WEIGHTED BY MARKET CAPITALIZATION (1991=1000)

	WEDNESDAY 11/10/2023	THURSDAY 12/10/2023	% CHANGE	
			DAY BEFORE	YTD
GENERAL	4413.4	4450.1	0.83%	-5.92%
BANKS	6515.7	6568.5	0.81%	-2.74%
INSURANCE	1255.6	1255.6	0.00%	-5.71%
SERVICES	881.2	883.5	0.26%	3.68%
INDUSTRY	5952.0	6014.4	1.05%	-12.61%

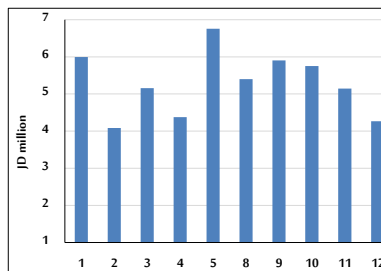
STOCK PRICE MARKET INDEX WEIGHTED BY FREE FLOAT MARKET CAP. (2012=1000)

	WEDNESDAY 11/10/2023	THURSDAY 12/10/2023	% CHANGE	
			DAY BEFORE	YTD
FIRST MARKET	1350.9	1358.4	0.55%	-3.57%
SECOND MARKET	850.4	853.0	0.31%	8.18%

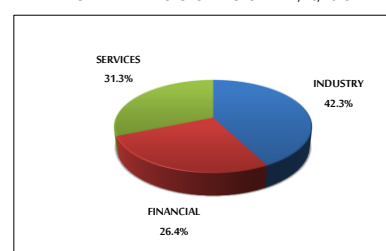
MARKET CAPITALIZATION (JD)

	16,925,824,702	17,047,964,867	0.72%	-5.31%
--	----------------	----------------	-------	--------

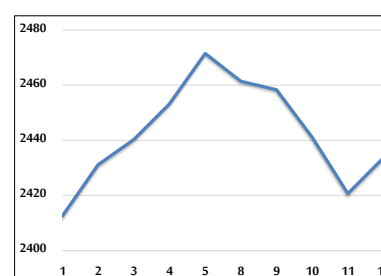
VALUE TRADED FROM 1/10 TO 12/10/2023



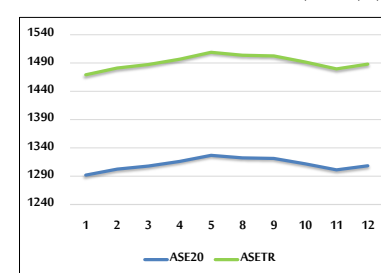
VALUE TRADED BY SECTOR THURSDAY 12/10/2023



GENERAL FREE FLOAT PRICE INDEX FROM 1/10 TO 12/10/2023



ASE20 and ASETR FREE FLOAT PRICE INDEX FROM 1/10 TO 12/10/2023



STOCK PRICE INDEX FROM 1/10 TO 12/10/2023

