

Daily Summary for Amman Stock Exchange

VALUE TRADED (JD)

	2022	2023	NET CHANGE	CHANGE (%)
Daily	6,488,904	6,756,831	267,927	4.13%
Cumulative (1/10-5/10)	22,756,938	26,369,043	3,612,105	15.87%
Cumulative (2/1-5/10)	1,590,847,024	1,200,919,718	-389,927,306	-24.51%

NO. OF SHARES TRADED

	2022	2023	NET CHANGE	CHANGE (%)
Daily	4,005,481	6,062,945	2,057,464	51.37%
Cumulative (1/10-5/10)	15,553,833	26,440,957	10,887,124	70.00%
Cumulative (2/1-5/10)	903,924,247	865,425,734	-38,498,513	-4.26%

NO. OF TRANSACTIONS

	2022	2023	NET CHANGE	CHANGE (%)
Daily	2,775	3,316	541	19.50%
Cumulative (1/10-5/10)	12,263	13,999	1,736	14.16%
Cumulative (2/1-5/10)	593,917	546,222	-47,695	-8.03%

SOME FINANCIAL RATIOS FOR THE ASE (5/10/2023)

SECTOR	P/E	P/BV	DIVIDEND YIELD (%)	TURNOVER (%)
FINANCIAL	9.004	0.818	5.646	0.065
SERVICES	12.221	1.351	6.506	0.089
INDUSTRY	5.570	1.633	7.094	0.270
OVERALL	7.191	1.048	6.519	0.097

STOCK PRICE INDEX WEIGHTED BY FREE FLOAT MARKET CAPITALIZATION (1999=1000)

	WEDNESDAY 04/10/2023	THURSDAY 05/10/2023	% CHANGE	
			DAY BEFORE	YTD
GENERAL	2453.2	2471.5	0.74%	-1.20%
FINANCIAL	2681.1	2707.9	1.00%	0.58%
SERVICES	1718.2	1715.3	-0.17%	-1.46%
INDUSTRY	4925.7	4963.4	0.76%	-6.21%

STOCK PRICE INDEX WEIGHTED BY FREE FLOAT MARKET CAPITALIZATION ASE20 (2014=1000)

	1316.2	1326.8	0.81%	-1.37%
--	--------	--------	-------	--------

Total Return Index ASETR (2021=1074)

	1496.8	1509.0	0.81%	5.51%
--	--------	--------	-------	-------

STOCK PRICE INDEX WEIGHTED BY MARKET CAPITALIZATION (1991=1000)

	WEDNESDAY 04/10/2023	THURSDAY 05/10/2023	% CHANGE	
			DAY BEFORE	YTD
GENERAL	4480.9	4528.4	1.06%	-4.27%
BANKS	6558.7	6666.9	1.65%	-1.28%
INSURANCE	1258.2	1260.3	0.17%	-5.36%
SERVICES	891.9	893.4	0.16%	4.84%
INDUSTRY	6115.9	6152.4	0.60%	-10.60%

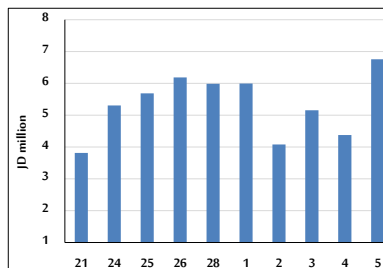
STOCK PRICE MARKET INDEX WEIGHTED BY FREE FLOAT MARKET CAP. (2012=1000)

	WEDNESDAY 04/10/2023	THURSDAY 05/10/2023	% CHANGE	
			DAY BEFORE	YTD
FIRST MARKET	1366.9	1377.6	0.78%	-2.20%
SECOND MARKET	870.1	870.9	0.10%	10.45%

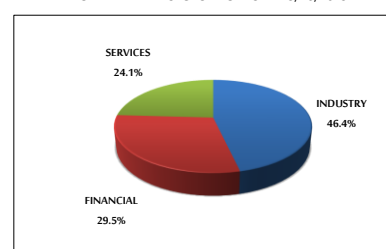
MARKET CAPITALIZATION (JD)

	17,129,954,155	17,302,422,671	1.01%	-3.90%
--	----------------	----------------	-------	--------

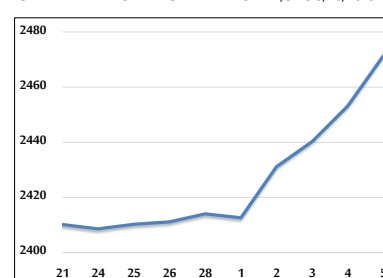
VALUE TRADED FROM 21/9 TO 5/10/2023



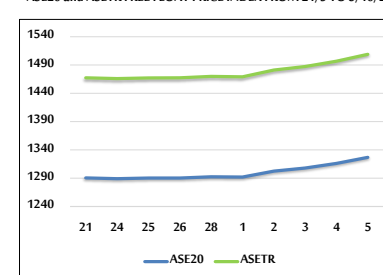
VALUE TRADED BY SECTOR THURSDAY 5/10/2023



GENERAL FREE FLOAT PRICE INDEX FROM 21/9 TO 5/10/2023



ASE20 and ASETR FREE FLOAT PRICE INDEX FROM 21/9 TO 5/10/2023



STOCK PRICE INDEX FROM 21/9 TO 5/10/2023

