

Daily Summary for Amman Stock Exchange

VALUE TRADED (JD)

	2022	2023	NET CHANGE	CHANGE (%)
Daily	4,052,708	4,376,835	324,127	8.00%
Cumulative (1/10-4/10)	16,268,034	19,612,212	3,344,178	20.56%
Cumulative (2/1-4/10)	1,584,358,120	1,194,162,887	-390,195,233	-24.63%

NO. OF SHARES TRADED

	2022	2023	NET CHANGE	CHANGE (%)
Daily	3,245,303	4,176,031	930,728	28.68%
Cumulative (1/10-4/10)	11,548,352	20,378,012	8,829,660	76.46%
Cumulative (2/1-4/10)	899,918,766	859,362,789	-40,555,977	-4.51%

NO. OF TRANSACTIONS

	2022	2023	NET CHANGE	CHANGE (%)
Daily	2,717	2,668	-49	-1.80%
Cumulative (1/10-4/10)	9,488	10,683	1,195	12.59%
Cumulative (2/1-4/10)	591,142	542,906	-48,236	-8.16%

SOME FINANCIAL RATIOS FOR THE ASE (4/10/2023)

SECTOR	P/E	P/BV	DIVIDEND YIELD (%)	TURNOVER (%)
FINANCIAL	8.869	0.805	5.732	0.055
SERVICES	12.237	1.353	6.497	0.108
INDUSTRY	5.526	1.621	7.150	0.063
OVERALL	7.115	1.037	6.588	0.067

STOCK PRICE INDEX WEIGHTED BY FREE FLOAT MARKET CAPITALIZATION (1999=1000)

	TUESDAY 03/10/2023	WEDNESDAY 04/10/2023	% CHANGE	
			DAY BEFORE	YTD
GENERAL	2440.3	2453.2	0.53%	-1.93%
FINANCIAL	2662.4	2681.1	0.70%	-0.41%
SERVICES	1718.0	1718.2	0.01%	-1.30%
INDUSTRY	4900.3	4925.7	0.52%	-6.93%

STOCK PRICE INDEX WEIGHTED BY FREE FLOAT MARKET CAPITALIZATION ASE20 (2014=1000)

	1307.9	1316.2	0.63%	-2.17%
--	--------	--------	-------	--------

Total Return Index ASETR (2021=1074)

	1487.4	1496.8	0.63%	4.66%
--	--------	--------	-------	-------

STOCK PRICE INDEX WEIGHTED BY MARKET CAPITALIZATION (1991=1000)

	TUESDAY 03/10/2023	WEDNESDAY 04/10/2023	% CHANGE	
			DAY BEFORE	YTD
GENERAL	4461.5	4480.9	0.43%	-5.27%
BANKS	6523.5	6558.7	0.54%	-2.89%
INSURANCE	1251.7	1258.2	0.52%	-5.52%
SERVICES	893.0	891.9	-0.12%	4.68%
INDUSTRY	6088.0	6115.9	0.46%	-11.13%

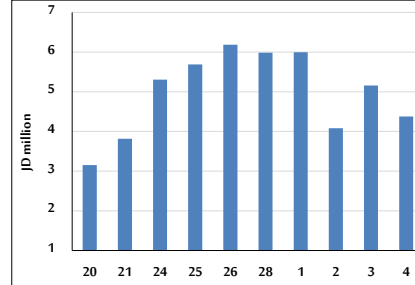
STOCK PRICE MARKET INDEX WEIGHTED BY FREE FLOAT MARKET CAP. (2012=1000)

	TUESDAY 03/10/2023	WEDNESDAY 04/10/2023	% CHANGE	
			DAY BEFORE	YTD
FIRST MARKET	1358.8	1366.9	0.60%	-2.96%
SECOND MARKET	871.1	870.1	-0.12%	10.34%

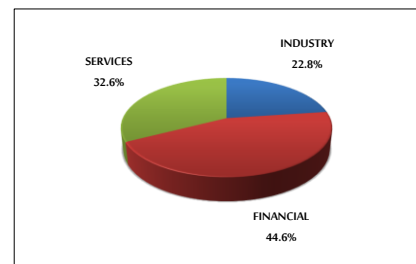
MARKET CAPITALIZATION (JD)

	17,061,023,535	17,129,954,155	0.40%	-4.85%
--	----------------	----------------	-------	--------

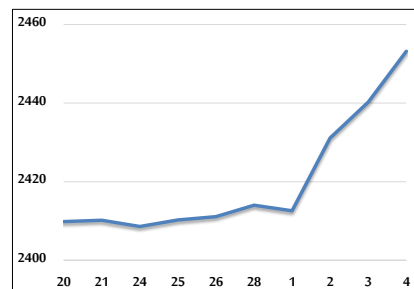
VALUE TRADED FROM 20/9 TO 4/10/2023



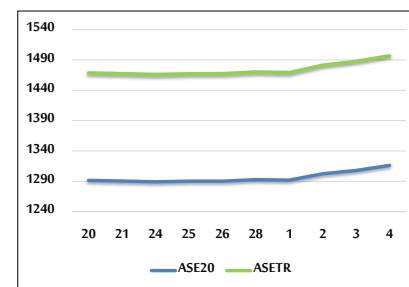
VALUE TRADED BY SECTOR WEDNESDAY 4/10/2023



GENERAL FREE FLOAT PRICE INDEX FROM 20/9 TO 4/10/2023



ASE20 and ASETR FREE FLOAT PRICE INDEX FROM 20/9 TO 4/10/2023



STOCK PRICE INDEX FROM 20/9 TO 4/10/2023

