

Daily Summary for Amman Stock Exchange

VALUE TRADED (JD)

	2022	2023	NET CHANGE	CHANGE (%)
Daily	3,562,529	4,082,638	520,109	14.60%
Cumulative (1/10-2/10)	7,284,316	10,078,789	2,794,473	38.36%
Cumulative (2/1-2/10)	1,575,374,402	1,184,629,464	-390,744,938	-24.80%

NO. OF SHARES TRADED

	2022	2023	NET CHANGE	CHANGE (%)
Daily	2,509,274	3,913,078	1,403,804	55.94%
Cumulative (1/10-2/10)	4,950,413	11,289,991	6,339,578	128.06%
Cumulative (2/1-2/10)	893,320,827	850,274,768	-43,046,059	-4.82%

NO. OF TRANSACTIONS

	2022	2023	NET CHANGE	CHANGE (%)
Daily	2,117	2,364	247	11.67%
Cumulative (1/10-2/10)	4,130	5,129	999	24.19%
Cumulative (2/1-2/10)	585,784	537,352	-48,432	-8.27%

SOME FINANCIAL RATIOS FOR THE ASE (2/10/2023)

SECTOR	P/E	P/BV	DIVIDEND YIELD (%)	TURNOVER (%)
FINANCIAL	8.733	0.793	5.822	0.062
SERVICES	12.231	1.352	6.501	0.065
INDUSTRY	5.516	1.617	7.164	0.063
OVERALL	7.055	1.028	6.645	0.063

STOCK PRICE INDEX WEIGHTED BY FREE FLOAT MARKET CAPITALIZATION (1999=1000)

	SUNDAY 01/10/2023	MONDAY 02/10/2023	% CHANGE	
			DAY BEFORE	YTD
GENERAL	2412.6	2431.1	0.77%	-2.82%
FINANCIAL	2628.9	2645.1	0.61%	-1.75%
SERVICES	1702.2	1715.7	0.79%	-1.44%
INDUSTRY	4867.6	4915.9	0.99%	-7.11%

STOCK PRICE INDEX WEIGHTED BY FREE FLOAT MARKET CAPITALIZATION ASE20 (2014=1000)

	1291.9	1302.4	0.82%	-3.19%
--	--------	--------	-------	--------

Total Return Index ASETR (2021=1074)

	1469.2	1481.2	0.82%	3.57%
--	--------	--------	-------	-------

STOCK PRICE INDEX WEIGHTED BY MARKET CAPITALIZATION (1991=1000)

	SUNDAY 01/10/2023	MONDAY 02/10/2023	% CHANGE	
			DAY BEFORE	YTD
GENERAL	4413.8	4442.6	0.65%	-6.08%
BANKS	6410.6	6449.9	0.61%	-4.50%
INSURANCE	1250.7	1250.7	0.00%	-6.08%
SERVICES	890.7	893.2	0.28%	4.82%
INDUSTRY	6058.2	6108.4	0.83%	-11.24%

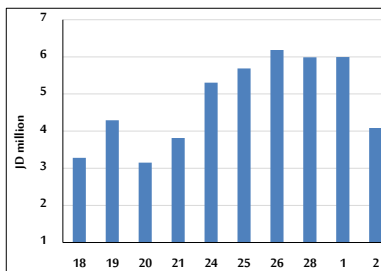
STOCK PRICE MARKET INDEX WEIGHTED BY FREE FLOAT MARKET CAP. (2012=1000)

	SUNDAY 01/10/2023	MONDAY 02/10/2023	% CHANGE	
			DAY BEFORE	YTD
FIRST MARKET	1343.3	1353.7	0.78%	-3.89%
SECOND MARKET	863.6	868.2	0.54%	10.11%

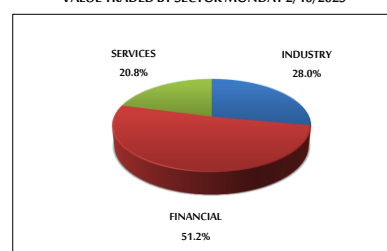
MARKET CAPITALIZATION (JD)

	16,884,916,961	16,986,695,073	0.60%	-5.65%
--	----------------	----------------	-------	--------

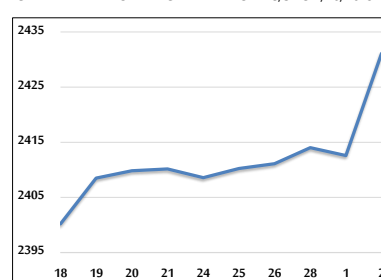
VALUE TRADED FROM 18/9 TO 2/10/2023



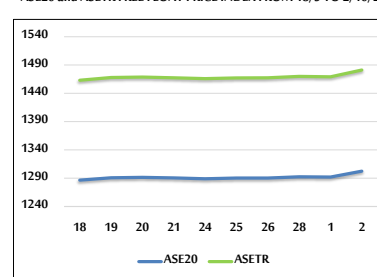
VALUE TRADED BY SECTOR MONDAY 2/10/2023



GENERAL FREE FLOAT PRICE INDEX FROM 18/9 TO 2/10/2023



ASE20 and ASETR FREE FLOAT PRICE INDEX FROM 18/9 TO 2/10/2023



STOCK PRICE INDEX FROM 18/9 TO 2/10/2023

