

Daily Summary for Amman Stock Exchange

VALUE TRADED (JD)

	2022	2023	NET CHANGE	CHANGE (%)
Daily	4,229,556	3,700,076	-529,480	-12.52%
Cumulative (1/9-6/9)	16,028,267	18,193,651	2,165,384	13.51%
Cumulative (2/1-6/9)	1,462,333,218	1,109,972,319	-352,360,899	-24.10%

NO. OF SHARES TRADED

	2022	2023	NET CHANGE	CHANGE (%)
Daily	2,363,822	4,330,550	1,966,728	83.20%
Cumulative (1/9-6/9)	10,205,191	17,582,482	7,377,291	72.29%
Cumulative (2/1-6/9)	822,333,414	763,205,798	-59,127,616	-7.19%

NO. OF TRANSACTIONS

	2022	2023	NET CHANGE	CHANGE (%)
Daily	2,533	2,906	373	14.73%
Cumulative (1/9-6/9)	8,905	10,565	1,660	18.64%
Cumulative (2/1-6/9)	538,848	489,606	-49,242	-9.14%

SOME FINANCIAL RATIOS FOR THE ASE (6/9/2023)

SECTOR	P/E	P/BV	DIVIDEND YIELD (%)	TURNOVER (%)
FINANCIAL	8.587	0.780	5.918	0.061
SERVICES	12.120	1.335	6.578	0.062
INDUSTRY	5.498	1.612	7.187	0.124
OVERALL	7.011	1.029	6.752	0.069

STOCK PRICE INDEX WEIGHTED BY FREE FLOAT MARKET CAPITALIZATION (1999=1000)

	TUESDAY 05/09/2023	WEDNESDAY 06/09/2023	% CHANGE	
			DAY BEFORE	YTD
GENERAL	2408.0	2400.4	-0.32%	-4.05%
FINANCIAL	2600.8	2594.4	-0.24%	-3.63%
SERVICES	1718.6	1707.4	-0.65%	-1.92%
INDUSTRY	4832.3	4843.1	0.22%	-8.49%

STOCK PRICE INDEX WEIGHTED BY FREE FLOAT MARKET CAPITALIZATION ASE20 (2014=1000)

	1291.9	1287.5	-0.34%	-4.30%
--	--------	--------	--------	--------

Total Return Index ASETR (2021=1074)

	1469.2	1464.2	-0.34%	2.38%
--	--------	--------	--------	-------

STOCK PRICE INDEX WEIGHTED BY MARKET CAPITALIZATION (1991=1000)

	TUESDAY 05/09/2023	WEDNESDAY 06/09/2023	% CHANGE	
			DAY BEFORE	YTD
GENERAL	4421.3	4413.8	-0.17%	-6.69%
BANKS	6362.5	6345.3	-0.27%	-6.05%
INSURANCE	1247.7	1248.2	0.04%	-6.27%
SERVICES	890.8	889.0	-0.21%	4.33%
INDUSTRY	6143.2	6140.8	-0.04%	-10.77%

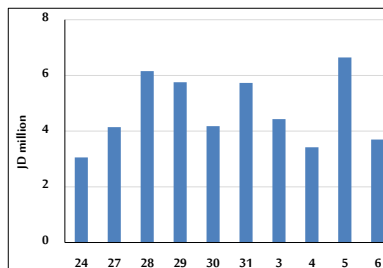
STOCK PRICE MARKET INDEX WEIGHTED BY FREE FLOAT MARKET CAP. (2012=1000)

	TUESDAY 05/09/2023	WEDNESDAY 06/09/2023	% CHANGE	
			DAY BEFORE	YTD
FIRST MARKET	1343.5	1338.7	-0.35%	-4.96%
SECOND MARKET	840.9	842.6	0.20%	6.86%

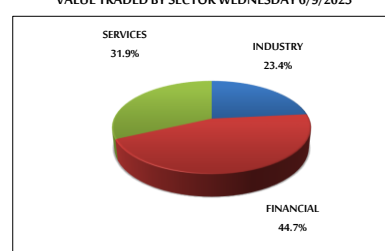
MARKET CAPITALIZATION (JD)

	16,826,389,339	16,810,834,469	-0.09%	-6.63%
--	----------------	----------------	--------	--------

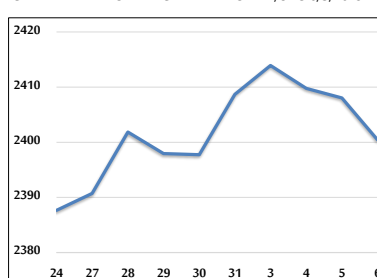
VALUE TRADED FROM 24/8 TO 6/9/2023



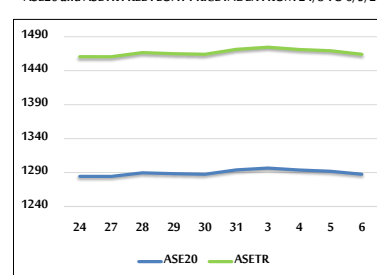
VALUE TRADED BY SECTOR WEDNESDAY 6/9/2023



GENERAL FREE FLOAT PRICE INDEX FROM 24/8 TO 6/9/2023



ASE20 and ASETR FREE FLOAT PRICE INDEX FROM 24/8 TO 6/9/2023



STOCK PRICE INDEX FROM 24/8 TO 6/9/2023

