

## Daily Summary for Amman Stock Exchange

### VALUE TRADED (JD)

	2022	2023	NET CHANGE	CHANGE (%)
Daily	11,673,746	4,291,138	-7,382,608	-63.24%
Cumulative (1/9-19/9)	74,120,428	52,639,880	-21,480,548	-28.98%
Cumulative (2/1-19/9)	1,520,425,379	1,144,418,548	-376,006,831	-24.73%

### NO. OF SHARES TRADED

	2022	2023	NET CHANGE	CHANGE (%)
Daily	7,252,277	5,842,685	-1,409,592	-19.44%
Cumulative (1/9-19/9)	48,919,485	65,558,353	16,638,868	34.01%
Cumulative (2/1-19/9)	861,047,708	811,181,669	-49,866,039	-5.79%

### NO. OF TRANSACTIONS

	2022	2023	NET CHANGE	CHANGE (%)
Daily	2,450	2,703	253	10.33%
Cumulative (1/9-19/9)	30,899	36,900	6,001	19.42%
Cumulative (2/1-19/9)	560,842	515,941	-44,901	-8.01%

### SOME FINANCIAL RATIOS FOR THE ASE (19/9/2023)

SECTOR	P/E	P/BV	DIVIDEND YIELD (%)	TURNOVER (%)
FINANCIAL	8.645	0.785	5.878	0.050
SERVICES	12.148	1.338	6.562	0.269
INDUSTRY	5.494	1.611	7.193	0.047
OVERALL	7.018	1.030	6.745	0.093

### STOCK PRICE INDEX WEIGHTED BY FREE FLOAT MARKET CAPITALIZATION (1999=1000)

	MONDAY 18/09/2023	TUESDAY 19/09/2023	% CHANGE	
			DAY BEFORE	YTD
GENERAL	2400.2	2408.5	0.35%	-3.72%
FINANCIAL	2601.5	2609.7	0.32%	-3.06%
SERVICES	1707.5	1708.6	0.07%	-1.85%
INDUSTRY	4836.7	4871.9	0.73%	-7.94%

### STOCK PRICE INDEX WEIGHTED BY FREE FLOAT MARKET CAPITALIZATION ASE20 (2014=1000)

	1286.5	1290.8	0.33%	-4.05%
--	--------	--------	-------	--------

### Total Return Index ASETR (2021=1074)

	1463.1	1467.9	0.33%	2.64%
--	--------	--------	-------	-------

### STOCK PRICE INDEX WEIGHTED BY MARKET CAPITALIZATION (1991=1000)

	MONDAY 18/09/2023	TUESDAY 19/09/2023	% CHANGE	
			DAY BEFORE	YTD
GENERAL	4400.9	4418.6	0.40%	-6.59%
BANKS	6368.4	6390.5	0.35%	-5.38%
INSURANCE	1237.9	1233.4	-0.36%	-7.38%
SERVICES	886.2	889.0	0.32%	4.34%
INDUSTRY	6074.2	6105.8	0.52%	-11.28%

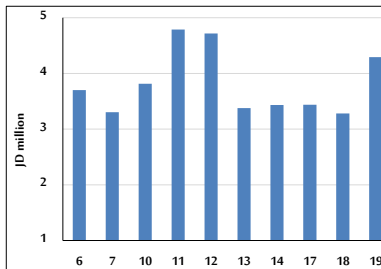
### STOCK PRICE MARKET INDEX WEIGHTED BY FREE FLOAT MARKET CAP. (2012=1000)

	MONDAY 18/09/2023	TUESDAY 19/09/2023	% CHANGE	
			DAY BEFORE	YTD
FIRST MARKET	1337.3	1342.3	0.37%	-4.71%
SECOND MARKET	851.4	851.3	-0.02%	7.96%

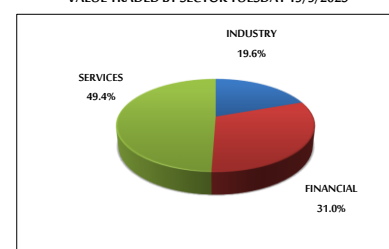
### MARKET CAPITALIZATION (JD)

	16,803,058,742	16,867,295,601	0.38%	-6.31%
--	----------------	----------------	-------	--------

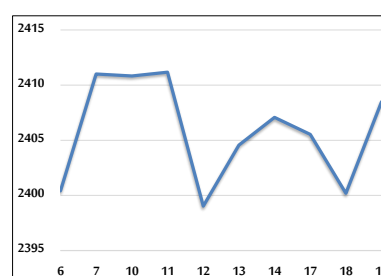
### VALUE TRADED FROM 6/9 TO 19/9/2023



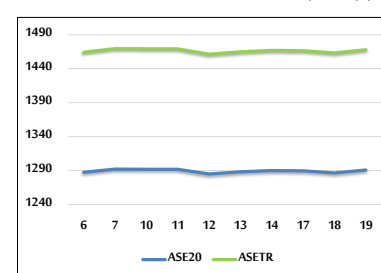
### VALUE TRADED BY SECTOR TUESDAY 19/9/2023



### GENERAL FREE FLOAT PRICE INDEX FROM 6/9 TO 19/9/2023



### ASE20 and ASETR FREE FLOAT PRICE INDEX FROM 6/9 TO 19/9/2023



### STOCK PRICE INDEX FROM 6/9 TO 19/9/2023

