

Daily Summary for Amman Stock Exchange

VALUE TRADED (JD)

	2022	2023	NET CHANGE	CHANGE (%)
Daily	3,621,244	6,646,006	3,024,762	83.53%
Cumulative (1/9-5/9)	11,798,711	14,493,575	2,694,864	22.84%
Cumulative (2/1-5/9)	1,458,103,662	1,106,272,243	-351,831,419	-24.13%

NO. OF SHARES TRADED

	2022	2023	NET CHANGE	CHANGE (%)
Daily	2,590,287	4,385,470	1,795,183	69.30%
Cumulative (1/9-5/9)	7,841,369	13,251,932	5,410,563	69.00%
Cumulative (2/1-5/9)	819,969,592	758,875,248	-61,094,344	-7.45%

NO. OF TRANSACTIONS

	2022	2023	NET CHANGE	CHANGE (%)
Daily	1,987	2,527	540	27.18%
Cumulative (1/9-5/9)	6,372	7,659	1,287	20.20%
Cumulative (2/1-5/9)	536,315	486,700	-49,615	-9.25%

SOME FINANCIAL RATIOS FOR THE ASE (5/9/2023)

SECTOR	P/E	P/BV	DIVIDEND YIELD (%)	TURNOVER (%)
FINANCIAL	8.608	0.782	5.904	0.061
SERVICES	12.168	1.341	6.552	0.114
INDUSTRY	5.485	1.608	7.204	0.051
OVERALL	7.021	1.031	6.742	0.070

STOCK PRICE INDEX WEIGHTED BY FREE FLOAT MARKET CAPITALIZATION (1999=1000)

	MONDAY 04/09/2023	TUESDAY 05/09/2023	% CHANGE	
			DAY BEFORE	YTD
GENERAL	2409.8	2408.0	-0.07%	-3.74%
FINANCIAL	2601.9	2600.8	-0.04%	-3.40%
SERVICES	1718.8	1718.6	-0.01%	-1.28%
INDUSTRY	4844.4	4832.3	-0.25%	-8.69%

STOCK PRICE INDEX WEIGHTED BY FREE FLOAT MARKET CAPITALIZATION ASE20 (2014=1000)

	1293.6	1291.9	-0.13%	-3.97%
--	--------	--------	--------	--------

Total Return Index ASETR (2021=1074)

	1471.2	1469.2	-0.13%	2.73%
--	--------	--------	--------	-------

STOCK PRICE INDEX WEIGHTED BY MARKET CAPITALIZATION (1991=1000)

	MONDAY 04/09/2023	TUESDAY 05/09/2023	% CHANGE	
			DAY BEFORE	YTD
GENERAL	4427.1	4421.3	-0.13%	-6.53%
BANKS	6365.8	6362.5	-0.05%	-5.79%
INSURANCE	1246.4	1247.7	0.11%	-6.30%
SERVICES	892.0	890.8	-0.14%	4.54%
INDUSTRY	6157.6	6143.2	-0.23%	-10.74%

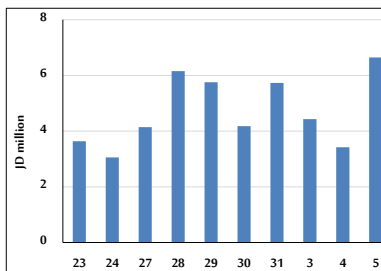
STOCK PRICE MARKET INDEX WEIGHTED BY FREE FLOAT MARKET CAP. (2012=1000)

	MONDAY 04/09/2023	TUESDAY 05/09/2023	% CHANGE	
			DAY BEFORE	YTD
FIRST MARKET	1344.9	1343.5	-0.10%	-4.62%
SECOND MARKET	838.6	840.9	0.27%	6.64%

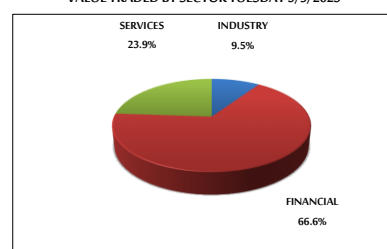
MARKET CAPITALIZATION (JD)

	16,848,596,040	16,826,389,339	-0.13%	-6.54%
--	----------------	----------------	--------	--------

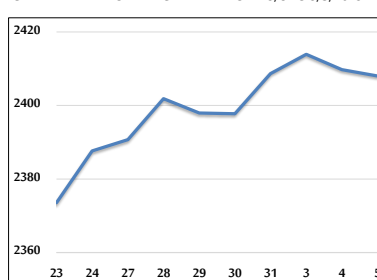
VALUE TRADED FROM 23/8 TO 5/9/2023



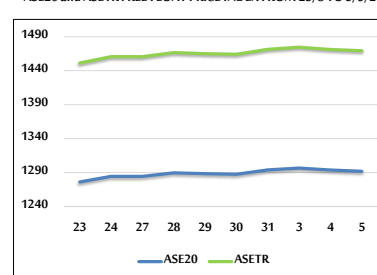
VALUE TRADED BY SECTOR TUESDAY 5/9/2023



GENERAL FREE FLOAT PRICE INDEX FROM 23/8 TO 5/9/2023



ASE20 and ASETR FREE FLOAT PRICE INDEX FROM 23/8 TO 5/9/2023



STOCK PRICE INDEX FROM 23/8 TO 5/9/2023

