

Daily Summary for Amman Stock Exchange

VALUE TRADED (JD)

	2022	2023	NET CHANGE	CHANGE (%)
Daily	6,152,393	3,333,935	-2,818,458	-45.81%
Cumulative (1/8-15/8)	114,366,095	39,472,869	-74,893,226	-65.49%
Cumulative (2/1-15/8)	1,266,104,022	1,025,353,456	-240,750,566	-19.02%

NO. OF SHARES TRADED

	2022	2023	NET CHANGE	CHANGE (%)
Daily	2,882,758	1,887,465	-995,293	-34.53%
Cumulative (1/8-15/8)	57,276,199	27,383,243	-29,892,956	-52.19%
Cumulative (2/1-15/8)	735,191,705	697,584,162	-37,607,543	-5.12%

NO. OF TRANSACTIONS

	2022	2023	NET CHANGE	CHANGE (%)
Daily	2,718	2,060	-658	-24.21%
Cumulative (1/8-15/8)	44,458	21,484	-22,974	-51.68%
Cumulative (2/1-15/8)	498,050	451,981	-46,069	-9.25%

SOME FINANCIAL RATIOS FOR THE ASE (15/8/2023)

SECTOR	P/E	P/BV	DIVIDEND YIELD (%)	TURNOVER (%)
FINANCIAL	8.591	0.781	5.907	0.027
SERVICES	12.058	1.328	6.612	0.033
INDUSTRY	5.548	1.627	7.123	0.040
OVERALL	7.031	1.032	6.730	0.030

STOCK PRICE INDEX WEIGHTED BY FREE FLOAT MARKET CAPITALIZATION (1999=1000)

	MONDAY 14/08/2023	TUESDAY 15/08/2023	% CHANGE	
			DAY BEFORE	YTD
GENERAL	2422.8	2405.7	-0.70%	-3.83%
FINANCIAL	2611.5	2599.4	-0.46%	-3.45%
SERVICES	1717.9	1703.2	-0.86%	-2.16%
INDUSTRY	4937.7	4871.8	-1.34%	-7.95%

STOCK PRICE INDEX WEIGHTED BY FREE FLOAT MARKET CAPITALIZATION ASE20 (2014=1000)

	1300.5	1292.1	-0.65%	-3.96%
--	--------	--------	--------	--------

Total Return Index ASETR (2021=1074)

	1479.0	1469.5	-0.65%	2.75%
--	--------	--------	--------	-------

STOCK PRICE INDEX WEIGHTED BY MARKET CAPITALIZATION (1991=1000)

	MONDAY 14/08/2023	TUESDAY 15/08/2023	% CHANGE	
			DAY BEFORE	YTD
GENERAL	4464.0	4429.2	-0.78%	-6.37%
BANKS	6388.4	6365.3	-0.36%	-5.75%
INSURANCE	1265.6	1249.1	-1.30%	-6.20%
SERVICES	885.2	879.7	-0.63%	3.24%
INDUSTRY	6279.1	6194.6	-1.35%	-9.99%

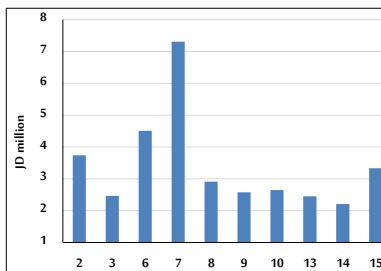
STOCK PRICE MARKET INDEX WEIGHTED BY FREE FLOAT MARKET CAP. (2012=1000)

	MONDAY 14/08/2023	TUESDAY 15/08/2023	% CHANGE	
			DAY BEFORE	YTD
FIRST MARKET	1353.2	1344.3	-0.66%	-4.57%
SECOND MARKET	825.6	818.2	-0.89%	3.77%

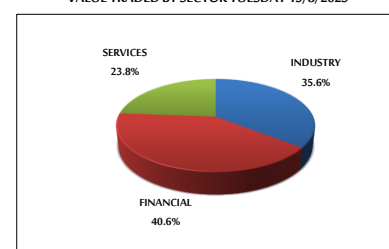
MARKET CAPITALIZATION (JD)

	16,992,125,255	16,863,529,704	-0.76%	-6.33%
--	----------------	----------------	--------	--------

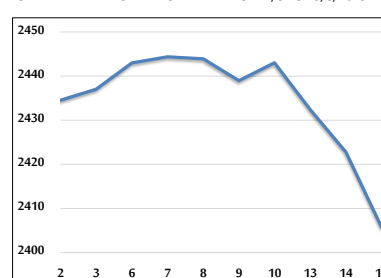
VALUE TRADED FROM 2/8 TO 15/8/2023



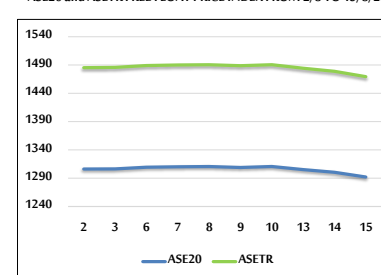
VALUE TRADED BY SECTOR TUESDAY 15/8/2023



GENERAL FREE FLOAT PRICE INDEX FROM 2/8 TO 15/8/2023



ASE20 and ASETR FREE FLOAT PRICE INDEX FROM 2/8 TO 15/8/2023



STOCK PRICE INDEX FROM 2/8 TO 15/8/2023

