

Daily Summary for Amman Stock Exchange

VALUE TRADED (JD)

	2022	2023	NET CHANGE	CHANGE (%)
Daily	14,774,084	5,922,498	-8,851,586	-59.91%
Cumulative (4/6-7/6)	42,481,123	18,542,591	-23,938,532	-56.35%
Cumulative (2/1-7/6)	784,652,303	779,830,393	-4,821,910	-0.61%

NO. OF SHARES TRADED

	2022	2023	NET CHANGE	CHANGE (%)
Daily	4,268,684	4,825,099	556,415	13.03%
Cumulative (4/6-7/6)	19,109,678	13,855,162	-5,254,516	-27.50%
Cumulative (2/1-7/6)	458,320,100	522,208,179	63,888,079	13.94%

NO. OF TRANSACTIONS

	2022	2023	NET CHANGE	CHANGE (%)
Daily	3,692	3,639	-53	-1.44%
Cumulative (4/6-7/6)	12,435	11,802	-633	-5.09%
Cumulative (2/1-7/6)	313,364	336,111	22,747	7.26%

SOME FINANCIAL RATIOS FOR THE ASE (7/6/2023)

SECTOR	P/E	P/BV	DIVIDEND YIELD (%)	TURNOVER (%)
FINANCIAL	9.786	0.800	5.754	0.057
SERVICES	10.025	1.376	6.386	0.061
INDUSTRY	5.276	1.838	6.303	0.198
OVERALL	7.018	1.100	6.294	0.077

STOCK PRICE INDEX WEIGHTED BY FREE FLOAT MARKET CAPITALIZATION (1999=1000)

	TUESDAY 06/06/2023	WEDNESDAY 07/06/2023	% CHANGE	
			DAY BEFORE	YTD
GENERAL	2493.6	2502.6	0.36%	0.04%
FINANCIAL	2655.3	2649.6	-0.21%	-1.58%
SERVICES	1752.4	1763.6	0.64%	1.31%
INDUSTRY	5357.2	5443.3	1.61%	2.85%

STOCK PRICE INDEX WEIGHTED BY FREE FLOAT MARKET CAPITALIZATION ASE20 (2014=1000)

	1340.9	1345.7	0.35%	0.03%
--	--------	--------	-------	-------

Total Return Index ASETR (2021=1074)

	1525.0	1530.4	0.35%	7.01%
--	--------	--------	-------	-------

STOCK PRICE INDEX WEIGHTED BY MARKET CAPITALIZATION (1991=1000)

	TUESDAY 06/06/2023	WEDNESDAY 07/06/2023	% CHANGE	
			DAY BEFORE	YTD
GENERAL	4671.1	4702.3	0.67%	-0.59%
BANKS	6475.6	6461.3	-0.22%	-4.33%
INSURANCE	1325.3	1337.5	0.92%	0.44%
SERVICES	903.5	903.3	-0.02%	6.01%
INDUSTRY	6876.9	7006.4	1.88%	1.81%

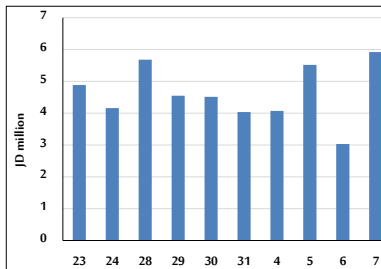
STOCK PRICE MARKET INDEX WEIGHTED BY FREE FLOAT MARKET CAP. (2012=1000)

	TUESDAY 06/06/2023	WEDNESDAY 07/06/2023	% CHANGE	
			DAY BEFORE	YTD
FIRST MARKET	1395.3	1399.0	0.26%	-0.68%
SECOND MARKET	826.5	834.7	0.98%	5.85%

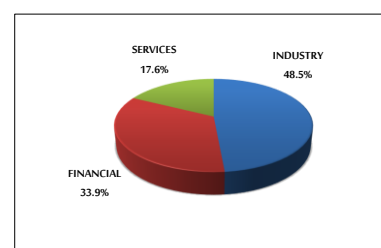
MARKET CAPITALIZATION (JD)

	17,762,284,527	17,861,395,814	0.56%	-0.79%
--	----------------	----------------	-------	--------

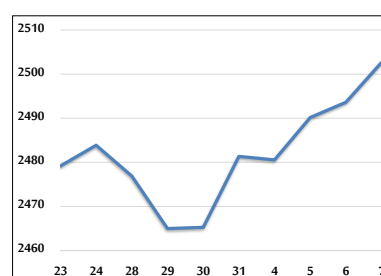
VALUE TRADED FROM 23/5 TO 7/6/2023



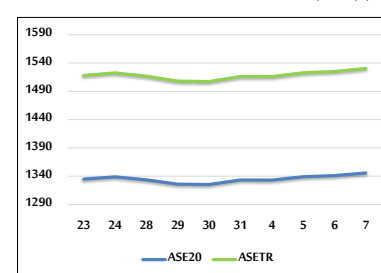
VALUE TRADED BY SECTOR WEDNESDAY 7/6/2023



GENERAL FREE FLOAT PRICE INDEX FROM 23/5 TO 7/6/2023



ASE20 and ASETR FREE FLOAT PRICE INDEX FROM 23/5 TO 7/6/2023



STOCK PRICE INDEX FROM 23/5 TO 7/6/2023

