

Daily Summary for Amman Stock Exchange

VALUE TRADED (JD)

	2022	2023	NET CHANGE	CHANGE (%)
Daily	9,055,731	3,030,976	-6,024,755	-66.53%
Cumulative (4/6-6/6)	27,707,039	12,620,093	-15,086,946	-54.45%
Cumulative (2/1-6/6)	769,878,219	773,907,895	4,029,676	0.52%

NO. OF SHARES TRADED

	2022	2023	NET CHANGE	CHANGE (%)
Daily	5,197,805	2,369,422	-2,828,383	-54.41%
Cumulative (4/6-6/6)	14,840,994	9,030,063	-5,810,931	-39.15%
Cumulative (2/1-6/6)	454,051,416	517,383,080	63,331,664	13.95%

NO. OF TRANSACTIONS

	2022	2023	NET CHANGE	CHANGE (%)
Daily	2,452	2,240	-212	-8.65%
Cumulative (4/6-6/6)	8,743	8,163	-580	-6.63%
Cumulative (2/1-6/6)	309,672	332,472	22,800	7.36%

SOME FINANCIAL RATIOS FOR THE ASE (6/6/2023)

SECTOR	P/E	P/BV	DIVIDEND YIELD (%)	TURNOVER (%)
FINANCIAL	9.801	0.801	5.745	0.027
SERVICES	10.000	1.373	6.402	0.033
INDUSTRY	5.192	1.809	6.404	0.097
OVERALL	6.971	1.093	6.336	0.038

STOCK PRICE INDEX WEIGHTED BY FREE FLOAT MARKET CAPITALIZATION (1999=1000)

	MONDAY 05/06/2023	TUESDAY 06/06/2023	% CHANGE	
			DAY BEFORE	YTD
GENERAL	2490.1	2493.6	0.14%	-0.32%
FINANCIAL	2651.1	2655.3	0.16%	-1.37%
SERVICES	1749.2	1752.4	0.19%	0.67%
INDUSTRY	5358.1	5357.2	-0.02%	1.23%

STOCK PRICE INDEX WEIGHTED BY FREE FLOAT MARKET CAPITALIZATION ASE20 (2014=1000)

	1339.0	1340.9	0.14%	-0.33%
--	--------	--------	-------	--------

Total Return Index ASETR (2021=1074)

	1522.8	1525.0	0.15%	6.63%
--	--------	--------	-------	-------

STOCK PRICE INDEX WEIGHTED BY MARKET CAPITALIZATION (1991=1000)

	MONDAY 05/06/2023	TUESDAY 06/06/2023	% CHANGE	
			DAY BEFORE	YTD
GENERAL	4672.6	4671.1	-0.03%	-1.25%
BANKS	6468.4	6475.6	0.11%	-4.12%
INSURANCE	1325.7	1325.3	-0.03%	-0.48%
SERVICES	904.7	903.5	-0.13%	6.03%
INDUSTRY	6887.7	6876.9	-0.16%	-0.08%

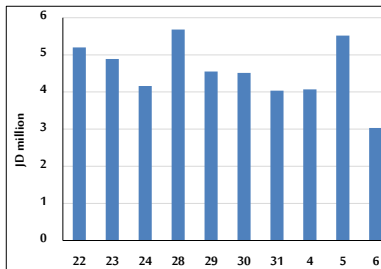
STOCK PRICE MARKET INDEX WEIGHTED BY FREE FLOAT MARKET CAP. (2012=1000)

	MONDAY 05/06/2023	TUESDAY 06/06/2023	% CHANGE	
			DAY BEFORE	YTD
FIRST MARKET	1393.3	1395.3	0.14%	-0.94%
SECOND MARKET	826.4	826.5	0.01%	4.82%

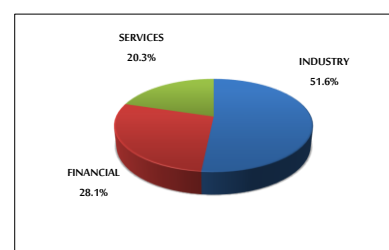
MARKET CAPITALIZATION (JD)

	17,767,063,730	17,762,284,527	-0.03%	-1.34%
--	----------------	----------------	--------	--------

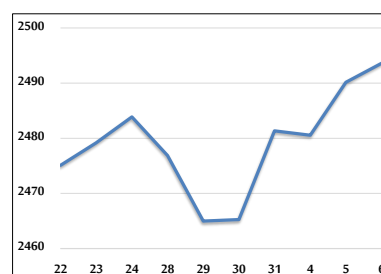
VALUE TRADED FROM 22/5 TO 6/6/2023



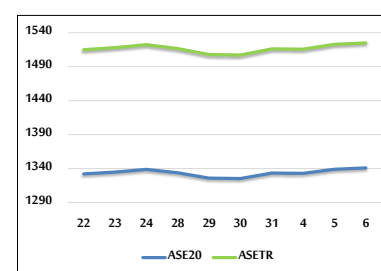
VALUE TRADED BY SECTOR TUESDAY 6/6/2023



GENERAL FREE FLOAT PRICE INDEX FROM 22/5 TO 6/6/2023



ASE20 and ASETR FREE FLOAT PRICE INDEX FROM 22/5 TO 6/6/2023



STOCK PRICE INDEX FROM 22/5 TO 6/6/2023

