

Daily Summary for Amman Stock Exchange

VALUE TRADED (JD)

	2022	2023	NET CHANGE	CHANGE (%)
Daily	8,115,879	5,517,950	-2,597,929	-32.01%
Cumulative (4/6-5/6)	18,651,308	9,589,117	-9,062,191	-48.59%
Cumulative (2/1-5/6)	760,822,488	770,876,919	10,054,431	1.32%

NO. OF SHARES TRADED

	2022	2023	NET CHANGE	CHANGE (%)
Daily	5,063,775	3,853,273	-1,210,502	-23.91%
Cumulative (4/6-5/6)	9,643,189	6,660,641	-2,982,548	-30.93%
Cumulative (2/1-5/6)	448,853,611	515,013,658	66,160,047	14.74%

NO. OF TRANSACTIONS

	2022	2023	NET CHANGE	CHANGE (%)
Daily	3,137	3,552	415	13.23%
Cumulative (4/6-5/6)	6,291	5,923	-368	-5.85%
Cumulative (2/1-5/6)	307,220	330,232	23,012	7.49%

SOME FINANCIAL RATIOS FOR THE ASE (5/6/2023)

SECTOR	P/E	P/BV	DIVIDEND YIELD (%)	TURNOVER (%)
FINANCIAL	9.792	0.801	5.751	0.032
SERVICES	9.995	1.372	6.405	0.045
INDUSTRY	5.203	1.813	6.391	0.234
OVERALL	6.974	1.093	6.334	0.061

STOCK PRICE INDEX WEIGHTED BY FREE FLOAT MARKET CAPITALIZATION (1999=1000)

	SUNDAY 04/06/2023	MONDAY 05/06/2023	% CHANGE	
			DAY BEFORE	YTD
GENERAL	2480.5	2490.1	0.39%	-0.46%
FINANCIAL	2645.2	2651.1	0.22%	-1.53%
SERVICES	1750.2	1749.2	-0.06%	0.48%
INDUSTRY	5286.5	5358.1	1.36%	1.24%

STOCK PRICE INDEX WEIGHTED BY FREE FLOAT MARKET CAPITALIZATION ASE20 (2014=1000)

	1332.9	1339.0	0.45%	-0.47%
--	--------	--------	-------	--------

Total Return Index ASETR (2021=1074)

	1515.9	1522.8	0.45%	6.48%
--	--------	--------	-------	-------

STOCK PRICE INDEX WEIGHTED BY MARKET CAPITALIZATION (1991=1000)

	SUNDAY 04/06/2023	MONDAY 05/06/2023	% CHANGE	
			DAY BEFORE	YTD
GENERAL	4646.9	4672.6	0.55%	-1.22%
BANKS	6455.1	6468.4	0.21%	-4.22%
INSURANCE	1326.2	1325.7	-0.03%	-0.44%
SERVICES	901.4	904.7	0.36%	6.18%
INDUSTRY	6818.8	6887.7	1.01%	0.08%

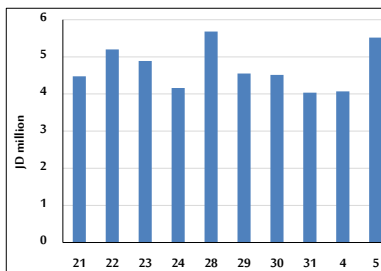
STOCK PRICE MARKET INDEX WEIGHTED BY FREE FLOAT MARKET CAP. (2012=1000)

	SUNDAY 04/06/2023	MONDAY 05/06/2023	% CHANGE	
			DAY BEFORE	YTD
FIRST MARKET	1387.0	1393.3	0.45%	-1.09%
SECOND MARKET	827.8	826.4	-0.16%	4.81%

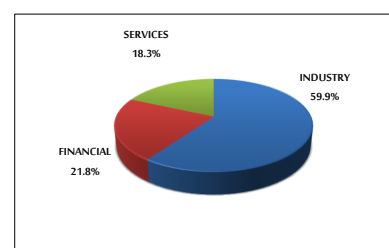
MARKET CAPITALIZATION (JD)

	17,673,097,712	17,767,063,730	0.53%	-1.31%
--	----------------	----------------	-------	--------

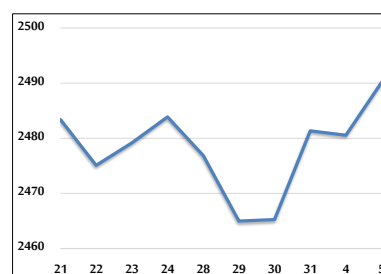
VALUE TRADED FROM 21/5 TO 5/6/2023



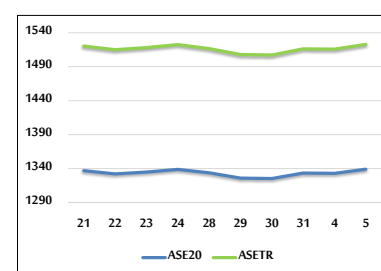
VALUE TRADED BY SECTOR MONDAY 5/6/2023



GENERAL FREE FLOAT PRICE INDEX FROM 21/5 TO 5/6/2023



ASE20 and ASETR FREE FLOAT PRICE INDEX FROM 21/5 TO 5/6/2023



STOCK PRICE INDEX FROM 21/5 TO 5/6/2023

