

Daily Summary for Amman Stock Exchange

VALUE TRADED (JD)

	2022	2023	NET CHANGE	CHANGE (%)
Daily	10,535,429	4,071,167	-6,464,262	-61.36%
Cumulative (4/6-4/6)	10,535,429	4,071,167	-6,464,262	-61.36%
Cumulative (2/1-4/6)	752,706,609	765,358,969	12,652,360	1.68%

NO. OF SHARES TRADED

	2022	2023	NET CHANGE	CHANGE (%)
Daily	4,579,414	2,807,368	-1,772,046	-38.70%
Cumulative (4/6-4/6)	4,579,414	2,807,368	-1,772,046	-38.70%
Cumulative (2/1-4/6)	443,789,836	511,160,385	67,370,549	15.18%

NO. OF TRANSACTIONS

	2022	2023	NET CHANGE	CHANGE (%)
Daily	3,154	2,371	-783	-24.83%
Cumulative (4/6-4/6)	3,154	2,371	-783	-24.83%
Cumulative (2/1-4/6)	304,083	326,680	22,597	7.43%

SOME FINANCIAL RATIOS FOR THE ASE (4/6/2023)

SECTOR	P/E	P/BV	DIVIDEND YIELD (%)	TURNOVER (%)
FINANCIAL	9.768	0.799	5.765	0.036
SERVICES	9.987	1.371	6.410	0.028
INDUSTRY	5.148	1.794	6.460	0.141
OVERALL	6.935	1.087	6.369	0.046

STOCK PRICE INDEX WEIGHTED BY FREE FLOAT MARKET CAPITALIZATION (1999=1000)

	WEDNESDAY 31/05/2023	SUNDAY 04/06/2023	% CHANGE	
			DAY BEFORE	YTD
GENERAL	2481.4	2480.5	-0.03%	-0.84%
FINANCIAL	2649.2	2645.2	-0.15%	-1.75%
SERVICES	1742.6	1750.2	0.43%	0.54%
INDUSTRY	5292.9	5286.5	-0.12%	-0.11%

STOCK PRICE INDEX WEIGHTED BY FREE FLOAT MARKET CAPITALIZATION ASE20 (2014=1000)

	1333.3	1332.9	-0.03%	-0.92%
--	--------	--------	--------	--------

Total Return Index ASETR (2021=1074)

	1516.3	1515.9	-0.03%	5.99%
--	--------	--------	--------	-------

STOCK PRICE INDEX WEIGHTED BY MARKET CAPITALIZATION (1991=1000)

	WEDNESDAY 31/05/2023	SUNDAY 04/06/2023	% CHANGE	
			DAY BEFORE	YTD
GENERAL	4645.9	4646.9	0.02%	-1.76%
BANKS	6453.6	6455.1	0.02%	-4.42%
INSURANCE	1322.8	1326.2	0.25%	-0.41%
SERVICES	899.2	901.4	0.25%	5.79%
INDUSTRY	6822.1	6818.8	-0.05%	-0.92%

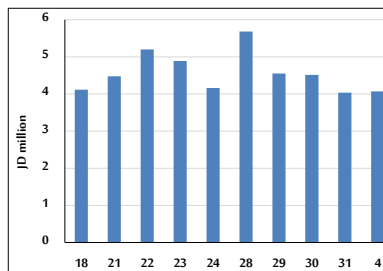
STOCK PRICE MARKET INDEX WEIGHTED BY FREE FLOAT MARKET CAP. (2012=1000)

	WEDNESDAY 31/05/2023	SUNDAY 04/06/2023	% CHANGE	
			DAY BEFORE	YTD
FIRST MARKET	1387.3	1387.0	-0.02%	-1.53%
SECOND MARKET	826.7	827.8	0.14%	4.98%

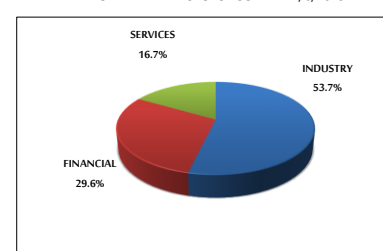
MARKET CAPITALIZATION (JD)

	17,667,509,459	17,673,097,712	0.03%	-1.84%
--	----------------	----------------	-------	--------

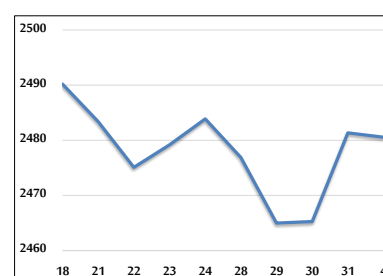
VALUE TRADED FROM 18/5 TO 4/6/2023



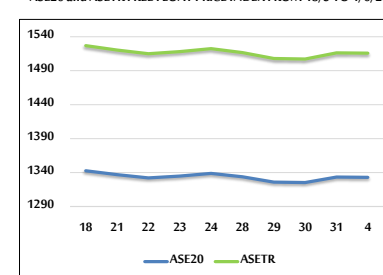
VALUE TRADED BY SECTOR SUNDAY 4/6/2023



GENERAL FREE FLOAT PRICE INDEX FROM 18/5 TO 4/6/2023



ASE20 and ASETR FREE FLOAT PRICE INDEX FROM 18/5 TO 4/6/2023



STOCK PRICE INDEX FROM 18/5 TO 4/6/2023

