

Daily Summary for Amman Stock Exchange

VALUE TRADED (JD)

	2022	2023	NET CHANGE	CHANGE (%)
Daily	7,399,885	4,035,099	-3,364,786	-45.47%
Cumulative (1/5-31/5)	178,724,977	115,772,741	-62,952,236	-35.22%
Cumulative (2/1-31/5)	742,171,180	761,287,802	19,116,622	2.58%

NO. OF SHARES TRADED

	2022	2023	NET CHANGE	CHANGE (%)
Daily	4,239,585	3,106,890	-1,132,695	-26.72%
Cumulative (1/5-31/5)	87,014,887	103,643,963	16,629,076	19.11%
Cumulative (2/1-31/5)	439,210,422	508,353,017	69,142,595	15.74%

NO. OF TRANSACTIONS

	2022	2023	NET CHANGE	CHANGE (%)
Daily	3,460	2,604	-856	-24.74%
Cumulative (1/5-31/5)	65,185	66,809	1,624	2.49%
Cumulative (2/1-31/5)	300,929	324,309	23,380	7.77%

SOME FINANCIAL RATIOS FOR THE ASE (31/5/2023)

SECTOR	P/E	P/BV	DIVIDEND YIELD (%)	TURNOVER (%)
FINANCIAL	9.765	0.798	5.767	0.034
SERVICES	9.951	1.366	6.433	0.040
INDUSTRY	5.153	1.795	6.454	0.180
OVERALL	6.934	1.087	6.370	0.051

STOCK PRICE INDEX WEIGHTED BY FREE FLOAT MARKET CAPITALIZATION (1999=1000)

	TUESDAY 30/05/2023	WEDNESDAY 31/05/2023	% CHANGE	
			DAY BEFORE	YTD
GENERAL	2465.3	2481.4	0.65%	-0.81%
FINANCIAL	2636.1	2649.2	0.50%	-1.60%
SERVICES	1733.1	1742.6	0.55%	0.10%
INDUSTRY	5238.7	5292.9	1.03%	0.01%

STOCK PRICE INDEX WEIGHTED BY FREE FLOAT MARKET CAPITALIZATION ASE20 (2014=1000)

	1325.3	1333.3	0.61%	-0.90%
--	--------	--------	-------	--------

Total Return Index ASETR (2021=1074)

	1507.2	1516.3	0.61%	6.02%
--	--------	--------	-------	-------

STOCK PRICE INDEX WEIGHTED BY MARKET CAPITALIZATION (1991=1000)

	TUESDAY 30/05/2023	WEDNESDAY 31/05/2023	% CHANGE	
			DAY BEFORE	YTD
GENERAL	4615.9	4645.9	0.65%	-1.79%
BANKS	6426.5	6453.6	0.42%	-4.44%
INSURANCE	1322.4	1322.8	0.03%	-0.66%
SERVICES	893.1	899.2	0.68%	5.53%
INDUSTRY	6761.2	6822.1	0.90%	-0.87%

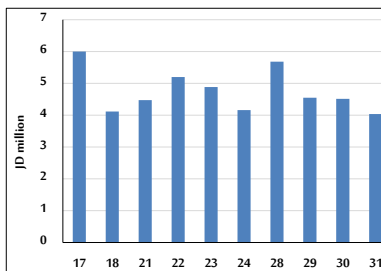
STOCK PRICE MARKET INDEX WEIGHTED BY FREE FLOAT MARKET CAP. (2012=1000)

	TUESDAY 30/05/2023	WEDNESDAY 31/05/2023	% CHANGE	
			DAY BEFORE	YTD
FIRST MARKET	1379.3	1387.3	0.58%	-1.51%
SECOND MARKET	817.3	826.7	1.15%	4.84%

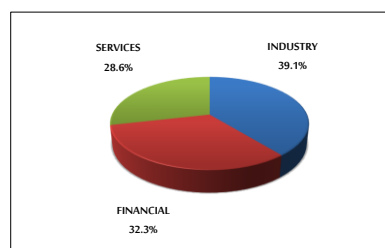
MARKET CAPITALIZATION (JD)

	17,562,116,249	17,667,509,459	0.60%	-1.87%
--	----------------	----------------	-------	--------

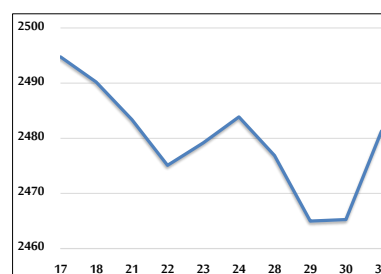
VALUE TRADED FROM 17/5 TO 31/5/2023



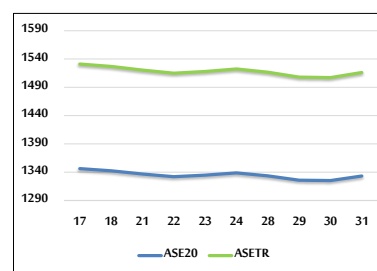
VALUE TRADED BY SECTOR WEDNESDAY 31/5/2023



GENERAL FREE FLOAT PRICE INDEX FROM 17/5 TO 31/5/2023



ASE20 and ASETR FREE FLOAT PRICE INDEX FROM 17/5 TO 31/5/2023



STOCK PRICE INDEX FROM 17/5 TO 31/5/2023

