

## Daily Summary for Amman Stock Exchange

### VALUE TRADED (JD)

	2022	2023	NET CHANGE	CHANGE (%)
Daily	-	5,681,013	-	-
Cumulative (1/5-28/5)	171,325,092	102,674,533	-68,650,559	-40.07%
Cumulative (2/1-28/5)	734,771,295	748,189,594	13,418,299	1.83%

### NO. OF SHARES TRADED

	2022	2023	NET CHANGE	CHANGE (%)
Daily	-	4,346,661	-	-
Cumulative (1/5-28/5)	82,775,302	94,346,518	11,571,216	13.98%
Cumulative (2/1-28/5)	434,970,837	499,055,572	64,084,735	14.73%

### NO. OF TRANSACTIONS

	2022	2023	NET CHANGE	CHANGE (%)
Daily	-	3,042	-	-
Cumulative (1/5-28/5)	61,725	59,072	-2,653	-4.30%
Cumulative (2/1-28/5)	297,469	316,572	19,103	6.42%

### SOME FINANCIAL RATIOS FOR THE ASE (28/5/2023)

SECTOR	P/E	P/BV	DIVIDEND YIELD (%)	TURNOVER (%)
FINANCIAL	9.724	0.795	5.791	0.049
SERVICES	9.886	1.357	6.475	0.061
INDUSTRY	5.190	1.808	6.407	0.231
OVERALL	6.932	1.087	6.372	0.071

### STOCK PRICE INDEX WEIGHTED BY FREE FLOAT MARKET CAPITALIZATION (1999=1000)

	WEDNESDAY 24/05/2023	SUNDAY 28/05/2023	% CHANGE	
			DAY BEFORE	YTD
GENERAL	2483.9	2476.9	-0.28%	-0.99%
FINANCIAL	2654.6	2641.7	-0.48%	-1.88%
SERVICES	1729.7	1736.3	0.38%	-0.26%
INDUSTRY	5332.2	5318.0	-0.26%	0.49%

### STOCK PRICE INDEX WEIGHTED BY FREE FLOAT MARKET CAPITALIZATION ASE20 (2014=1000)

	1338.7	1333.7	-0.38%	-0.87%
--	--------	--------	--------	--------

### Total Return Index ASETR (2021=1074)

	1522.4	1516.7	-0.38%	6.05%
--	--------	--------	--------	-------

### STOCK PRICE INDEX WEIGHTED BY MARKET CAPITALIZATION (1991=1000)

	WEDNESDAY 24/05/2023	SUNDAY 28/05/2023	% CHANGE	
			DAY BEFORE	YTD
GENERAL	4659.7	4644.7	-0.32%	-1.81%
BANKS	6463.2	6422.6	-0.63%	-4.90%
INSURANCE	1320.2	1322.3	0.16%	-0.70%
SERVICES	879.6	890.7	1.26%	4.53%
INDUSTRY	6909.4	6876.7	-0.47%	-0.08%

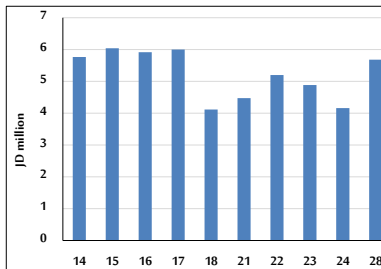
### STOCK PRICE MARKET INDEX WEIGHTED BY FREE FLOAT MARKET CAP. (2012=1000)

	WEDNESDAY 24/05/2023	SUNDAY 28/05/2023	% CHANGE	
			DAY BEFORE	YTD
FIRST MARKET	1391.3	1387.0	-0.31%	-1.53%
SECOND MARKET	815.9	815.9	0.00%	3.47%

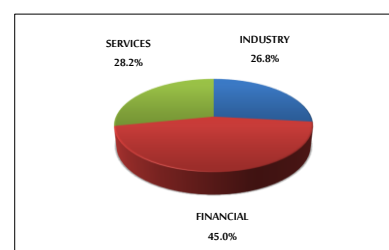
### MARKET CAPITALIZATION (JD)

	17,712,650,081	17,662,369,221	-0.28%	-1.90%
--	----------------	----------------	--------	--------

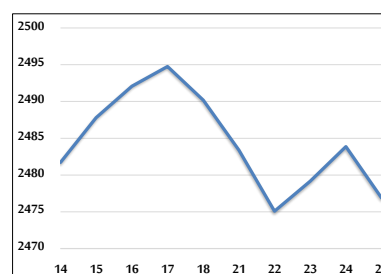
### VALUE TRADED FROM 14/5 TO 28/5/2023



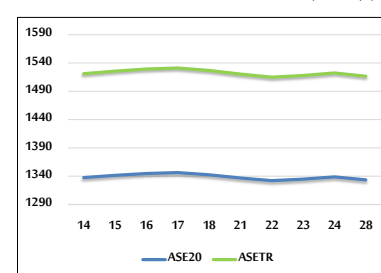
### VALUE TRADED BY SECTOR SUNDAY 28/5/2023



### GENERAL FREE FLOAT PRICE INDEX FROM 14/5 TO 28/5/2023



### ASE20 and ASETR FREE FLOAT PRICE INDEX FROM 14/5 TO 28/5/2023



### STOCK PRICE INDEX FROM 14/5 TO 28/5/2023

