

## Daily Summary for Amman Stock Exchange

### VALUE TRADED (JD)

	2022	2023	NET CHANGE	CHANGE (%)
Daily	-	4,887,646	-	-
Cumulative (1/5-23/5)	171,325,092	92,833,643	-78,491,449	-45.81%
Cumulative (2/1-23/5)	734,771,295	738,348,704	3,577,409	0.49%

### NO. OF SHARES TRADED

	2022	2023	NET CHANGE	CHANGE (%)
Daily	-	5,113,173	-	-
Cumulative (1/5-23/5)	82,775,302	85,201,126	2,425,824	2.93%
Cumulative (2/1-23/5)	434,970,837	489,910,180	54,939,343	12.63%

### NO. OF TRANSACTIONS

	2022	2023	NET CHANGE	CHANGE (%)
Daily	-	3,301	-	-
Cumulative (1/5-23/5)	61,725	53,050	-8,675	-14.05%
Cumulative (2/1-23/5)	297,469	310,550	13,081	4.40%

### SOME FINANCIAL RATIOS FOR THE ASE (23/5/2023)

SECTOR	P/E	P/BV	DIVIDEND YIELD (%)	TURNOVER (%)
FINANCIAL	9.776	0.799	5.760	0.048
SERVICES	9.754	1.339	6.563	0.123
INDUSTRY	5.174	1.803	6.427	0.237
OVERALL	6.928	1.086	6.376	0.084

### STOCK PRICE INDEX WEIGHTED BY FREE FLOAT MARKET CAPITALIZATION (1999=1000)

	MONDAY 22/05/2023	TUESDAY 23/05/2023	% CHANGE	
			DAY BEFORE	YTD
GENERAL	2475.1	2479.2	0.17%	-0.90%
FINANCIAL	2642.6	2651.4	0.33%	-1.52%
SERVICES	1732.4	1725.2	-0.42%	-0.89%
INDUSTRY	5299.3	5319.8	0.39%	0.52%

### STOCK PRICE INDEX WEIGHTED BY FREE FLOAT MARKET CAPITALIZATION ASE20 (2014=1000)

	1332.1	1334.8	0.20%	-0.78%
--	--------	--------	-------	--------

### Total Return Index ASETR (2021=1074)

	1515.0	1518.0	0.20%	6.14%
--	--------	--------	-------	-------

### STOCK PRICE INDEX WEIGHTED BY MARKET CAPITALIZATION (1991=1000)

	MONDAY 22/05/2023	TUESDAY 23/05/2023	% CHANGE	
			DAY BEFORE	YTD
GENERAL	4633.7	4642.1	0.18%	-1.87%
BANKS	6450.9	6461.1	0.16%	-4.33%
INSURANCE	1300.4	1312.4	0.93%	-1.44%
SERVICES	878.8	876.6	-0.25%	2.88%
INDUSTRY	6834.7	6856.9	0.33%	-0.37%

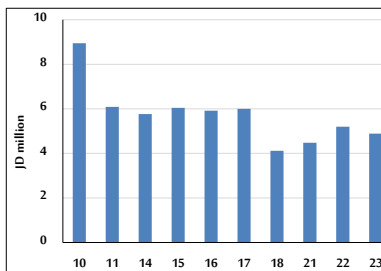
### STOCK PRICE MARKET INDEX WEIGHTED BY FREE FLOAT MARKET CAP. (2012=1000)

	MONDAY 22/05/2023	TUESDAY 23/05/2023	% CHANGE	
			DAY BEFORE	YTD
FIRST MARKET	1386.5	1388.0	0.11%	-1.46%
SECOND MARKET	808.8	815.7	0.85%	3.45%

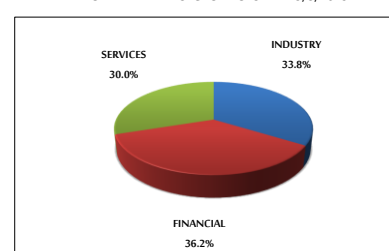
### MARKET CAPITALIZATION (JD)

	17,621,980,894	17,652,130,919	0.17%	-1.95%
--	----------------	----------------	-------	--------

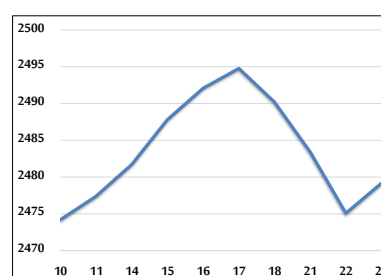
### VALUE TRADED FROM 10/5 TO 23/5/2023



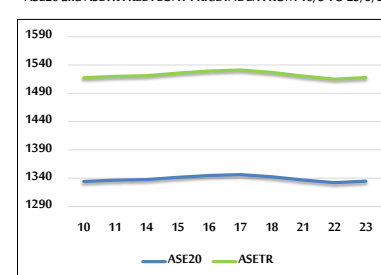
### VALUE TRADED BY SECTOR TUESDAY 23/5/2023



### GENERAL FREE FLOAT PRICE INDEX FROM 10/5 TO 23/5/2023



### ASE20 and ASETR FREE FLOAT PRICE INDEX FROM 10/5 TO 23/5/2023



### STOCK PRICE INDEX FROM 10/5 TO 23/5/2023

