

Daily Summary for Amman Stock Exchange

VALUE TRADED (JD)

	2022	2023	NET CHANGE	CHANGE (%)
Daily	12,555,014	4,458,525	-8,096,489	-64.49%
Cumulative (2/4-13/4)	94,862,557	49,350,528	-45,512,029	-47.98%
Cumulative (2/1-13/4)	481,810,598	583,488,825	101,678,227	21.10%

NO. OF SHARES TRADED

	2022	2023	NET CHANGE	CHANGE (%)
Daily	5,353,540	1,920,305	-3,433,235	-64.13%
Cumulative (2/4-13/4)	37,832,339	31,484,938	-6,347,401	-16.78%
Cumulative (2/1-13/4)	310,037,739	372,054,975	62,017,236	20.00%

NO. OF TRANSACTIONS

	2022	2023	NET CHANGE	CHANGE (%)
Daily	4,454	2,096	-2,358	-52.94%
Cumulative (2/4-13/4)	31,420	22,756	-8,664	-27.57%
Cumulative (2/1-13/4)	202,961	236,763	33,802	16.65%

SOME FINANCIAL RATIOS FOR THE ASE (13/4/2023)

SECTOR	P/E	P/BV	DIVIDEND YIELD (%)	TURNOVER (%)
FINANCIAL	10.561	0.823	5.548	0.018
SERVICES	9.585	1.343	6.445	0.064
INDUSTRY	4.627	1.708	6.785	0.054
OVERALL	6.767	1.080	6.402	0.031

STOCK PRICE INDEX WEIGHTED BY FREE FLOAT MARKET CAPITALIZATION (1999=1000)

	WEDNESDAY 12/04/2023	THURSDAY 13/04/2023	% CHANGE	
			DAY BEFORE	YTD
GENERAL	2477.6	2469.8	-0.32%	-1.27%
FINANCIAL	2682.6	2676.2	-0.24%	-0.60%
SERVICES	1729.6	1719.4	-0.59%	-1.23%
INDUSTRY	5115.0	5113.5	-0.03%	-3.38%

STOCK PRICE INDEX WEIGHTED BY FREE FLOAT MARKET CAPITALIZATION ASE20 (2014=1000)

	1337.4	1332.0	-0.40%	-0.99%
--	--------	--------	--------	--------

Total Return Index ASETR (2021=1074)

	1485.3	1479.4	-0.40%	3.44%
--	--------	--------	--------	-------

STOCK PRICE INDEX WEIGHTED BY MARKET CAPITALIZATION (1991=1000)

	WEDNESDAY 12/04/2023	THURSDAY 13/04/2023	% CHANGE	
			DAY BEFORE	YTD
GENERAL	4628.9	4613.7	-0.33%	-2.47%
BANKS	6699.8	6671.7	-0.42%	-1.21%
INSURANCE	1284.6	1283.4	-0.09%	-3.62%
SERVICES	888.4	887.0	-0.16%	4.10%
INDUSTRY	6499.3	6481.5	-0.27%	-5.82%

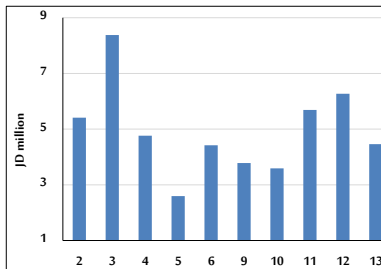
STOCK PRICE MARKET INDEX WEIGHTED BY FREE FLOAT MARKET CAP. (2012=1000)

	WEDNESDAY 12/04/2023	THURSDAY 13/04/2023	% CHANGE	
			DAY BEFORE	YTD
FIRST MARKET	1392.9	1387.8	-0.36%	-1.47%
SECOND MARKET	790.4	792.3	0.24%	0.48%

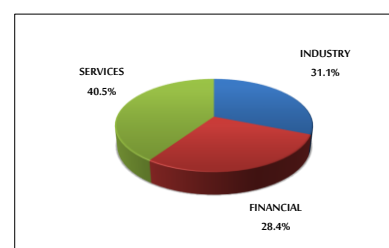
MARKET CAPITALIZATION (JD)

	17,624,116,808	17,571,141,110	-0.30%	-2.40%
--	----------------	----------------	--------	--------

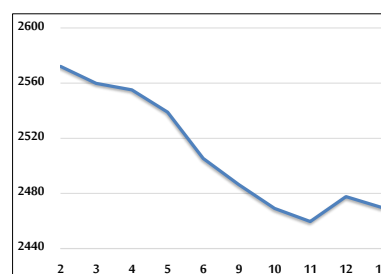
VALUE TRADED FROM 2/4 TO 13/4/2023



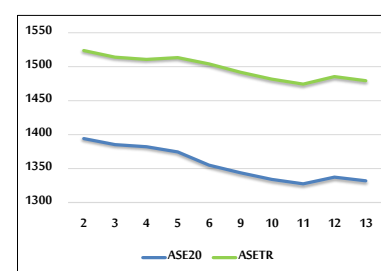
VALUE TRADED BY SECTOR THURSDAY 13/4/2023



GENERAL FREE FLOAT PRICE INDEX FROM 2/4 TO 13/4/2023



ASE20 and ASETR FREE FLOAT PRICE INDEX FROM 2/4 TO 13/4/2023



STOCK PRICE INDEX FROM 2/4 TO 13/4/2023

