

## Daily Summary for Amman Stock Exchange

### VALUE TRADED (JD)

	2022	2023	NET CHANGE	CHANGE (%)
Daily	7,944,182	2,595,940	-5,348,242	-67.32%
Cumulative (2/4-5/4)	26,003,035	21,148,762	-4,854,273	-18.67%
Cumulative (2/1-5/4)	412,951,076	555,287,059	142,335,983	34.47%

### NO. OF SHARES TRADED

	2022	2023	NET CHANGE	CHANGE (%)
Daily	4,047,665	1,950,659	-2,097,006	-51.81%
Cumulative (2/4-5/4)	13,351,577	15,275,171	1,923,594	14.41%
Cumulative (2/1-5/4)	285,556,977	355,845,208	70,288,231	24.61%

### NO. OF TRANSACTIONS

	2022	2023	NET CHANGE	CHANGE (%)
Daily	3,051	1,636	-1,415	-46.38%
Cumulative (2/4-5/4)	9,760	8,468	-1,292	-13.24%
Cumulative (2/1-5/4)	181,301	222,475	41,174	22.71%

### SOME FINANCIAL RATIOS FOR THE ASE (5/4/2023)

SECTOR	P/E	P/BV	DIVIDEND YIELD (%)	TURNOVER (%)
FINANCIAL	10.540	0.821	5.559	0.021
SERVICES	10.178	1.444	5.114	0.050
INDUSTRY	4.861	1.792	6.457	0.066
OVERALL	6.955	1.111	6.072	0.032

### STOCK PRICE INDEX WEIGHTED BY FREE FLOAT MARKET CAPITALIZATION (1999=1000)

	TUESDAY 04/04/2023	WEDNESDAY 05/04/2023	% CHANGE	
			DAY BEFORE	YTD
GENERAL	2555.1	2538.9	-0.63%	1.49%
FINANCIAL	2684.2	2687.9	0.14%	-0.16%
SERVICES	1850.0	1847.8	-0.12%	6.15%
INDUSTRY	5485.0	5289.4	-3.57%	-0.06%

### STOCK PRICE INDEX WEIGHTED BY FREE FLOAT MARKET CAPITALIZATION ASE20 (2014=1000)

	1382.2	1374.4	-0.57%	2.16%
--	--------	--------	--------	-------

### Total Return Index ASETR (2021=1074)

	1510.7	1513.5	0.18%	5.83%
--	--------	--------	-------	-------

### STOCK PRICE INDEX WEIGHTED BY MARKET CAPITALIZATION (1991=1000)

	TUESDAY 04/04/2023	WEDNESDAY 05/04/2023	% CHANGE	
			DAY BEFORE	YTD
GENERAL	4791.7	4742.0	-1.04%	0.25%
BANKS	6618.3	6653.0	0.52%	-1.49%
INSURANCE	1317.1	1314.7	-0.18%	-1.27%
SERVICES	916.1	913.6	-0.27%	7.22%
INDUSTRY	7117.4	6902.4	-3.02%	0.30%

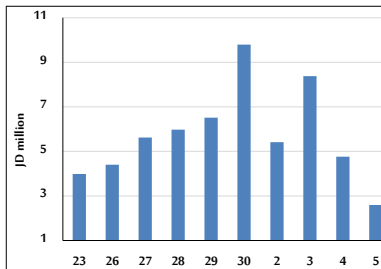
### STOCK PRICE MARKET INDEX WEIGHTED BY FREE FLOAT MARKET CAP. (2012=1000)

	TUESDAY 04/04/2023	WEDNESDAY 05/04/2023	% CHANGE	
			DAY BEFORE	YTD
FIRST MARKET	1437.5	1429.2	-0.58%	1.46%
SECOND MARKET	793.3	790.8	-0.31%	0.29%

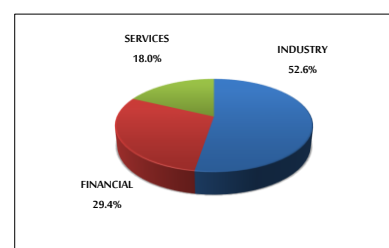
### MARKET CAPITALIZATION (JD)

	18,205,876,318	18,030,097,267	-0.97%	0.15%
--	----------------	----------------	--------	-------

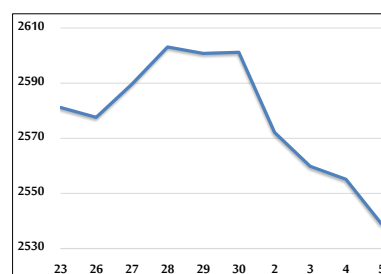
### VALUE TRADED FROM 23/3 TO 5/4/2023



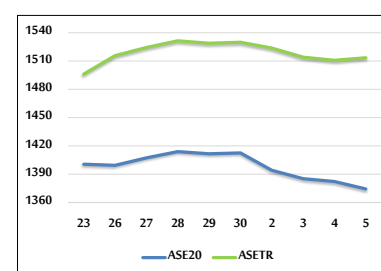
### VALUE TRADED BY SECTOR WEDNESDAY 5/4/2023



### GENERAL FREE FLOAT PRICE INDEX FROM 23/3 TO 5/4/2023



### ASE20 and ASETR FREE FLOAT PRICE INDEX FROM 23/3 TO 5/4/2023



### STOCK PRICE INDEX FROM 23/3 TO 5/4/2023

