

Daily Summary for Amman Stock Exchange

VALUE TRADED (JD)

	2022	2023	NET CHANGE	CHANGE (%)
Daily	5,229,939	4,761,757	-468,182	-8.95%
Cumulative (2/4-4/4)	18,058,853	18,552,822	493,969	2.74%
Cumulative (2/1-4/4)	405,006,894	552,691,119	147,684,225	36.46%

NO. OF SHARES TRADED

	2022	2023	NET CHANGE	CHANGE (%)
Daily	2,556,851	3,405,281	848,430	33.18%
Cumulative (2/4-4/4)	9,303,912	13,324,512	4,020,600	43.21%
Cumulative (2/1-4/4)	281,509,312	353,894,549	72,385,237	25.71%

NO. OF TRANSACTIONS

	2022	2023	NET CHANGE	CHANGE (%)
Daily	2,393	2,063	-330	-13.79%
Cumulative (2/4-4/4)	6,709	6,832	123	1.83%
Cumulative (2/1-4/4)	178,250	220,839	42,589	23.89%

SOME FINANCIAL RATIOS FOR THE ASE (4/4/2023)

SECTOR	P/E	P/BV	DIVIDEND YIELD (%)	TURNOVER (%)
FINANCIAL	10.494	0.818	5.584	0.043
SERVICES	10.190	1.445	5.108	0.111
INDUSTRY	5.018	1.849	6.255	0.033
OVERALL	7.028	1.123	6.010	0.056

STOCK PRICE INDEX WEIGHTED BY FREE FLOAT MARKET CAPITALIZATION (1999=1000)

	MONDAY 03/04/2023	TUESDAY 04/04/2023	% CHANGE	
			DAY BEFORE	YTD
GENERAL	2559.8	2555.1	-0.18%	2.14%
FINANCIAL	2693.2	2684.2	-0.33%	-0.30%
SERVICES	1847.0	1850.0	0.16%	6.27%
INDUSTRY	5488.9	5485.0	-0.07%	3.64%

STOCK PRICE INDEX WEIGHTED BY FREE FLOAT MARKET CAPITALIZATION ASE20 (2014=1000)

	1385.3	1382.2	-0.22%	2.74%
--	--------	--------	--------	-------

Total Return Index ASETR (2021=1074)

	1514.1	1510.7	-0.22%	5.64%
--	--------	--------	--------	-------

STOCK PRICE INDEX WEIGHTED BY MARKET CAPITALIZATION (1991=1000)

	MONDAY 03/04/2023	TUESDAY 04/04/2023	% CHANGE	
			DAY BEFORE	YTD
GENERAL	4808.5	4791.7	-0.35%	1.30%
BANKS	6662.2	6618.3	-0.66%	-2.00%
INSURANCE	1325.1	1317.1	-0.60%	-1.09%
SERVICES	919.9	916.1	-0.42%	7.51%
INDUSTRY	7114.6	7117.4	0.04%	3.42%

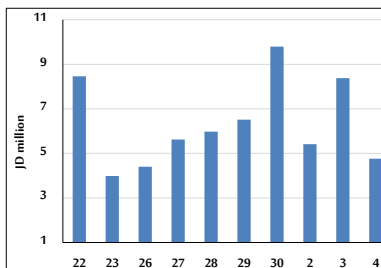
STOCK PRICE MARKET INDEX WEIGHTED BY FREE FLOAT MARKET CAP. (2012=1000)

	MONDAY 03/04/2023	TUESDAY 04/04/2023	% CHANGE	
			DAY BEFORE	YTD
FIRST MARKET	1440.3	1437.5	-0.20%	2.05%
SECOND MARKET	793.4	793.3	-0.02%	0.60%

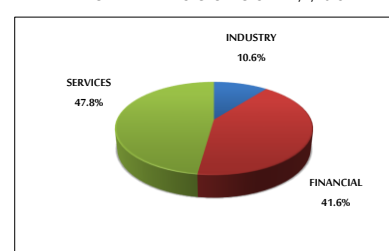
MARKET CAPITALIZATION (JD)

	18,265,099,455	18,205,876,318	-0.32%	1.12%
--	----------------	----------------	--------	-------

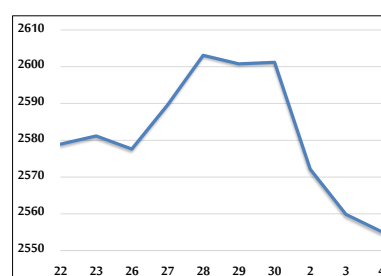
VALUE TRADED FROM 22/3 TO 4/4/2023



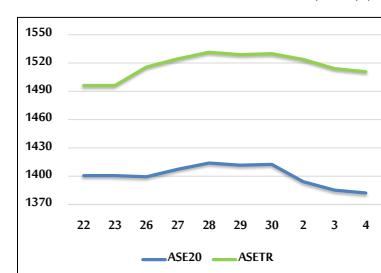
VALUE TRADED BY SECTOR TUESDAY 4/4/2023



GENERAL FREE FLOAT PRICE INDEX FROM 22/3 TO 4/4/2023



ASE20 and ASETR FREE FLOAT PRICE INDEX FROM 22/3 TO 4/4/2023



STOCK PRICE INDEX FROM 22/3 TO 4/4/2023

