

Daily Summary for Amman Stock Exchange

VALUE TRADED (JD)

	2022	2023	NET CHANGE	CHANGE (%)
Daily	5,559,477	8,639,768	3,080,291	55.41%
Cumulative (1/2-14/2)	58,892,243	97,504,399	38,612,156	65.56%
Cumulative (2/1-14/2)	170,477,510	287,254,175	116,776,665	68.50%

NO. OF SHARES TRADED

	2022	2023	NET CHANGE	CHANGE (%)
Daily	3,686,119	4,977,545	1,291,426	35.03%
Cumulative (1/2-14/2)	43,519,999	58,755,419	15,235,420	35.01%
Cumulative (2/1-14/2)	130,075,992	170,699,681	40,623,689	31.23%

NO. OF TRANSACTIONS

	2022	2023	NET CHANGE	CHANGE (%)
Daily	3,069	4,095	1,026	33.43%
Cumulative (1/2-14/2)	26,255	41,708	15,453	58.86%
Cumulative (2/1-14/2)	86,243	119,379	33,136	38.42%

SOME FINANCIAL RATIOS FOR THE ASE (14/2/2023)

SECTOR	P/E	P/BV	DIVIDEND YIELD (%)	TURNOVER (%)
FINANCIAL	10.967	0.855	5.337	0.073
SERVICES	11.563	1.583	3.644	0.082
INDUSTRY	14.777	3.271	3.414	0.136
OVERALL	11.983	1.364	4.400	0.082

STOCK PRICE INDEX WEIGHTED BY FREE FLOAT MARKET CAPITALIZATION (1999=1000)

	MONDAY 13/02/2023	TUESDAY 14/02/2023	% CHANGE	
			DAY BEFORE	YTD
GENERAL	2744.8	2732.9	-0.44%	9.25%
FINANCIAL	2792.1	2789.9	-0.08%	3.63%
SERVICES	1916.9	1910.8	-0.32%	9.76%
INDUSTRY	6633.6	6540.7	-1.40%	23.59%

STOCK PRICE INDEX WEIGHTED BY FREE FLOAT MARKET CAPITALIZATION ASE20 (2014=1000)

	1498.5	1490.3	-0.55%	10.78%
--	--------	--------	--------	--------

Total Return Index ASETR (2021=1074)

	1593.0	1584.3	-0.55%	10.78%
--	--------	--------	--------	--------

STOCK PRICE INDEX WEIGHTED BY MARKET CAPITALIZATION (1991=1000)

	MONDAY 13/02/2023	TUESDAY 14/02/2023	% CHANGE	
			DAY BEFORE	YTD
GENERAL	5420.5	5374.3	-0.85%	13.61%
BANKS	6890.8	6882.5	-0.12%	1.91%
INSURANCE	1296.5	1296.8	0.02%	-2.62%
SERVICES	953.2	946.8	-0.67%	11.12%
INDUSTRY	8995.1	8851.7	-1.59%	28.62%

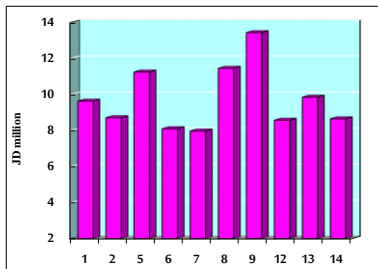
STOCK PRICE MARKET INDEX WEIGHTED BY FREE FLOAT MARKET CAP. (2012=1000)

	MONDAY 13/02/2023	TUESDAY 14/02/2023	% CHANGE	
			DAY BEFORE	YTD
FIRST MARKET	1551.6	1544.2	-0.47%	9.63%
SECOND MARKET	804.5	804.5	0.00%	2.03%

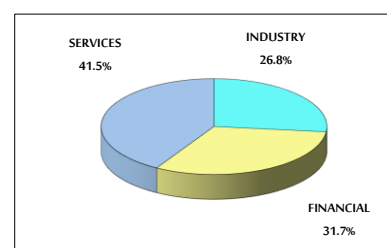
MARKET CAPITALIZATION (JD)

	20,461,349,351	20,296,639,784	-0.80%	12.74%
--	----------------	----------------	--------	--------

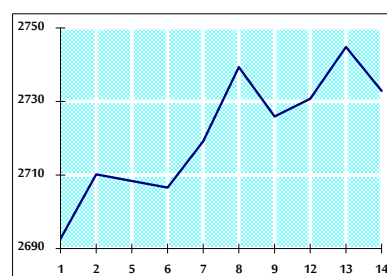
VALUE TRADED FROM 1/2 TO 14/2/2023



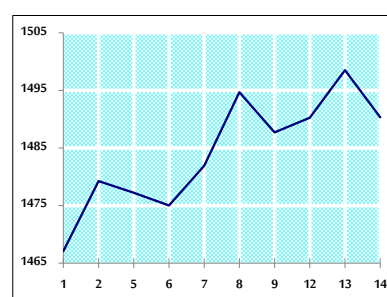
VALUE TRADED BY SECTOR TUESDAY 14/2/2023



GENERAL FREE FLOAT PRICE INDEX FROM 1/2 TO 14/2/2023



ASE20 FREE FLOAT PRICE INDEX FROM 1/2 TO 14/2/2023



GENERAL PRICE INDEX FROM 1/2 TO 14/2/2023

