

Daily Summary for Amman Stock Exchange

VALUE TRADED (JD)

	2022	2023	NET CHANGE	CHANGE (%)
Daily	4,902,562	8,562,658	3,660,096	74.66%
Cumulative (1/2-12/2)	47,859,773	79,026,106	31,166,333	65.12%
Cumulative (2/1-12/2)	159,445,040	268,775,882	109,330,842	68.57%

NO. OF SHARES TRADED

	2022	2023	NET CHANGE	CHANGE (%)
Daily	3,711,879	4,361,069	649,190	17.49%
Cumulative (1/2-12/2)	36,212,773	48,951,176	12,738,403	35.18%
Cumulative (2/1-12/2)	122,768,766	160,895,438	38,126,672	31.06%

NO. OF TRANSACTIONS

	2022	2023	NET CHANGE	CHANGE (%)
Daily	2,885	3,852	967	33.52%
Cumulative (1/2-12/2)	20,298	33,563	13,265	65.35%
Cumulative (2/1-12/2)	80,286	111,234	30,948	38.55%

SOME FINANCIAL RATIOS FOR THE ASE (12/2/2023)

SECTOR	P/E	P/BV	DIVIDEND YIELD (%)	TURNOVER (%)
FINANCIAL	14.101	0.870	4.956	0.052
SERVICES	14.558	1.610	3.606	0.103
INDUSTRY	14.645	3.244	3.471	0.133
OVERALL	13.889	1.377	4.245	0.072

STOCK PRICE INDEX WEIGHTED BY FREE FLOAT MARKET CAPITALIZATION (1999=1000)

	THURSDAY 09/02/2023	SUNDAY 12/02/2023	% CHANGE	
			DAY BEFORE	YTD
GENERAL	2725.9	2730.7	0.18%	9.16%
FINANCIAL	2803.9	2799.7	-0.15%	3.99%
SERVICES	1911.0	1904.9	-0.32%	9.42%
INDUSTRY	6379.0	6484.1	1.65%	22.52%

STOCK PRICE INDEX WEIGHTED BY FREE FLOAT MARKET CAPITALIZATION ASE20 (2014=1000)

	1487.7	1490.3	0.17%	10.77%
--	--------	--------	-------	--------

Total Return Index ASETR (2021=1074)

	1581.5	1584.2	0.17%	10.77%
--	--------	--------	-------	--------

STOCK PRICE INDEX WEIGHTED BY MARKET CAPITALIZATION (1991=1000)

	THURSDAY 09/02/2023	SUNDAY 12/02/2023	% CHANGE	
			DAY BEFORE	YTD
GENERAL	5356.2	5375.0	0.35%	13.63%
BANKS	6922.6	6921.5	-0.02%	2.49%
INSURANCE	1292.2	1296.5	0.33%	-2.64%
SERVICES	974.7	963.1	-1.19%	13.04%
INDUSTRY	8667.2	8766.4	1.14%	27.38%

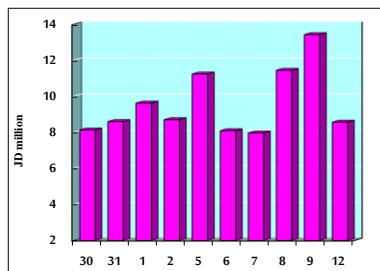
STOCK PRICE MARKET INDEX WEIGHTED BY FREE FLOAT MARKET CAP. (2012=1000)

	THURSDAY 09/02/2023	SUNDAY 12/02/2023	% CHANGE	
			DAY BEFORE	YTD
FIRST MARKET	1541.1	1543.4	0.15%	9.57%
SECOND MARKET	805.3	804.2	-0.14%	1.99%

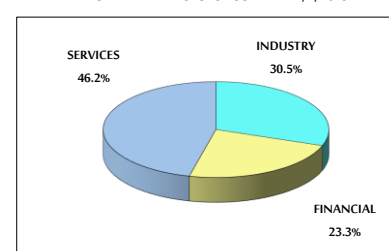
MARKET CAPITALIZATION (JD)

	20,232,187,078	20,299,507,201	0.33%	12.75%
--	----------------	----------------	-------	--------

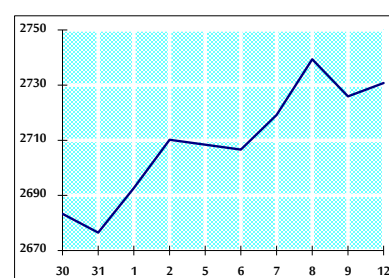
VALUE TRADED FROM 30/1 TO 12/2/2023



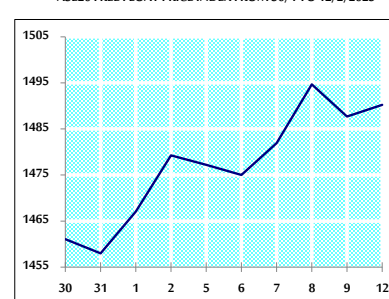
VALUE TRADED BY SECTOR SUNDAY 12/2/2023



GENERAL FREE FLOAT PRICE INDEX FROM 30/1 TO 12/2/2023



ASE20 FREE FLOAT PRICE INDEX FROM 30/1 TO 12/2/2023



GENERAL PRICE INDEX FROM 30/1 TO 12/2/2023

