

Daily Summary for Amman Stock Exchange

VALUE TRADED (JD)

	2022	2023	NET CHANGE	CHANGE (%)
Daily	12,559,967	7,962,813	-4,597,154	-36.60%
Cumulative (1/2-7/2)	33,263,493	45,604,899	12,341,406	37.10%
Cumulative (2/1-7/2)	144,848,760	235,354,675	90,505,915	62.48%

NO. OF SHARES TRADED

	2022	2023	NET CHANGE	CHANGE (%)
Daily	7,282,010	5,330,956	-1,951,054	-26.79%
Cumulative (1/2-7/2)	23,916,186	29,989,930	6,073,744	25.40%
Cumulative (2/1-7/2)	110,472,179	141,934,192	31,462,013	28.48%

NO. OF TRANSACTIONS

	2022	2023	NET CHANGE	CHANGE (%)
Daily	1,927	4,162	2,235	115.98%
Cumulative (1/2-7/2)	12,384	19,453	7,069	57.08%
Cumulative (2/1-7/2)	72,372	97,124	24,752	34.20%

SOME FINANCIAL RATIOS FOR THE ASE (7/2/2023)

SECTOR	P/E	P/BV	DIVIDEND YIELD (%)	TURNOVER (%)
FINANCIAL	14.214	0.897	4.746	0.080
SERVICES	15.149	1.606	3.617	0.086
INDUSTRY	13.833	3.061	3.682	0.138
OVERALL	13.674	1.372	4.253	0.087

STOCK PRICE INDEX WEIGHTED BY FREE FLOAT MARKET CAPITALIZATION (1999=1000)

	MONDAY 06/02/2023	TUESDAY 07/02/2023	% CHANGE	
			DAY BEFORE	YTD
GENERAL	2706.6	2719.2	0.47%	8.70%
FINANCIAL	2820.6	2821.6	0.03%	4.80%
SERVICES	1897.4	1908.3	0.58%	9.62%
INDUSTRY	6112.6	6205.4	1.52%	17.25%

STOCK PRICE INDEX WEIGHTED BY FREE FLOAT MARKET CAPITALIZATION ASE20 (2014=1000)

	1475.0	1481.9	0.47%	10.15%
--	--------	--------	-------	--------

Total Return Index ASETR (2021=1074)

	1568.0	1575.4	0.47%	10.15%
--	--------	--------	-------	--------

STOCK PRICE INDEX WEIGHTED BY MARKET CAPITALIZATION (1991=1000)

	MONDAY 06/02/2023	TUESDAY 07/02/2023	% CHANGE	
			DAY BEFORE	YTD
GENERAL	5219.0	5256.0	0.71%	11.11%
BANKS	6963.1	6962.5	-0.01%	3.09%
INSURANCE	1308.8	1307.6	-0.09%	-1.81%
SERVICES	962.7	965.7	0.31%	13.34%
INDUSTRY	8143.0	8271.9	1.58%	20.20%

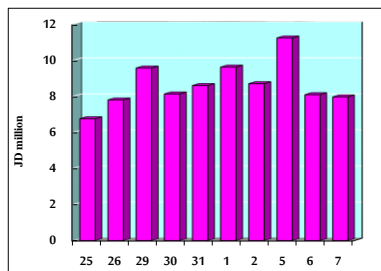
STOCK PRICE MARKET INDEX WEIGHTED BY FREE FLOAT MARKET CAP. (2012=1000)

	MONDAY 06/02/2023	TUESDAY 07/02/2023	% CHANGE	
			DAY BEFORE	YTD
FIRST MARKET	1529.4	1536.3	0.45%	9.07%
SECOND MARKET	806.0	807.7	0.21%	2.43%

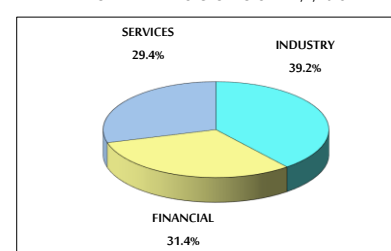
MARKET CAPITALIZATION (JD)

	19,728,089,655	19,862,790,165	0.68%	10.33%
--	----------------	----------------	-------	--------

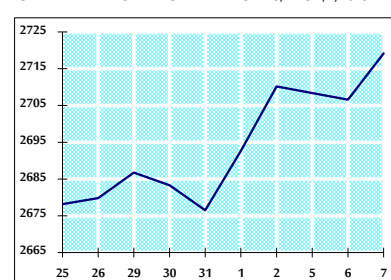
VALUE TRADED FROM 25/1 TO 7/2/2023



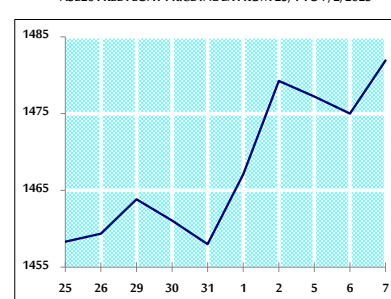
VALUE TRADED BY SECTOR TUESDAY 7/2/2023



GENERAL FREE FLOAT PRICE INDEX FROM 25/1 TO 7/2/2023



ASE20 FREE FLOAT PRICE INDEX FROM 25/1 TO 7/2/2023



GENERAL PRICE INDEX FROM 25/1 TO 7/2/2023

