

### Daily Summary for Amman Stock Exchange

VALUE TRADED (JD)

	2022	2023	NET CHANGE	CHANGE (%)
Daily	4,114,844	8,088,104	3,973,260	96.56%
Cumulative (1/2-6/2)	20,703,526	37,642,086	16,938,560	81.81%
Cumulative (2/1-6/2)	132,288,793	227,391,862	95,103,069	71.89%

NO. OF SHARES TRADED

	2022	2023	NET CHANGE	CHANGE (%)
Daily	3,595,105	5,262,172	1,667,067	46.37%
Cumulative (1/2-6/2)	16,634,176	24,658,974	8,024,798	48.24%
Cumulative (2/1-6/2)	103,190,169	136,603,236	33,413,067	32.38%

NO. OF TRANSACTIONS

	2022	2023	NET CHANGE	CHANGE (%)
Daily	2,254	4,006	1,752	77.73%
Cumulative (1/2-6/2)	10,457	15,291	4,834	46.23%
Cumulative (2/1-6/2)	70,445	92,962	22,517	31.96%

SOME FINANCIAL RATIOS FOR THE ASE (6/2/2023)

SECTOR	P/E	P/BV	DIVIDEND YIELD (%)	TURNOVER (%)
FINANCIAL	14.331	0.902	4.747	0.074
SERVICES	15.053	1.595	3.640	0.123
INDUSTRY	13.628	3.016	3.737	0.098
OVERALL	13.627	1.368	4.283	0.086

STOCK PRICE INDEX WEIGHTED BY FREE FLOAT MARKET CAPITALIZATION (1999=1000)

	SUNDAY 05/02/2023	MONDAY 06/02/2023	% CHANGE	
			DAY BEFORE	YTD
GENERAL	2708.4	2706.6	-0.07%	8.19%
FINANCIAL	2822.0	2820.6	-0.05%	4.77%
SERVICES	1909.9	1897.4	-0.65%	8.99%
INDUSTRY	6074.1	6112.6	0.63%	15.50%

STOCK PRICE INDEX WEIGHTED BY FREE FLOAT MARKET CAPITALIZATION ASE20 (2014=1000)

	1477.2	1475.0	-0.15%	9.64%
--	--------	--------	--------	-------

Total Return Index ASETR (2021=1074)

	1570.4	1568.0	-0.15%	9.64%
--	--------	--------	--------	-------

STOCK PRICE INDEX WEIGHTED BY MARKET CAPITALIZATION (1991=1000)

	SUNDAY 05/02/2023	MONDAY 06/02/2023	% CHANGE	
			DAY BEFORE	YTD
GENERAL	5212.9	5219.0	0.12%	10.33%
BANKS	6964.2	6963.1	-0.02%	3.10%
INSURANCE	1311.9	1308.8	-0.24%	-1.72%
SERVICES	958.3	962.7	0.46%	12.99%
INDUSTRY	8130.3	8143.0	0.16%	18.32%

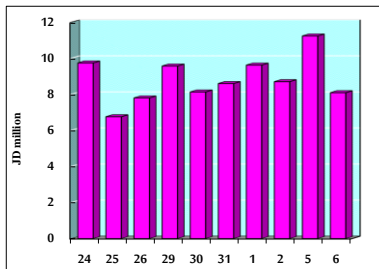
STOCK PRICE MARKET INDEX WEIGHTED BY FREE FLOAT MARKET CAP. (2012=1000)

	SUNDAY 05/02/2023	MONDAY 06/02/2023	% CHANGE	
			DAY BEFORE	YTD
FIRST MARKET	1531.2	1529.4	-0.12%	8.58%
SECOND MARKET	801.0	806.0	0.62%	2.22%

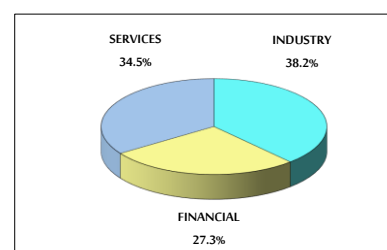
MARKET CAPITALIZATION (JD)

	19,706,753,797	19,728,089,655	0.11%	9.58%
--	----------------	----------------	-------	-------

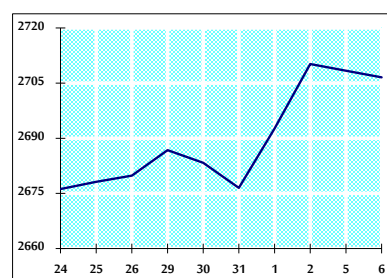
VALUE TRADED FROM 24/1 TO 6/2/2023



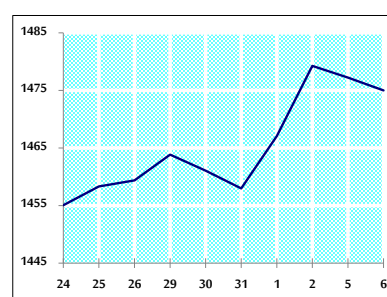
VALUE TRADED BY SECTOR MONDAY 6/2/2023



GENERAL FREE FLOAT PRICE INDEX FROM 24/1 TO 6/2/2023



ASE20 FREE FLOAT PRICE INDEX FROM 24/1 TO 6/2/2023



GENERAL PRICE INDEX FROM 24/1 TO 6/2/2023

