

## Daily Summary for Amman Stock Exchange

### VALUE TRADED (JD)

	2022	2023	NET CHANGE	CHANGE (%)
Daily	6,903,661	10,296,845	3,393,184	49.15%
Cumulative (1/2-28/2)	114,835,411	184,324,860	69,489,449	60.51%
Cumulative (2/1-28/2)	226,420,678	374,074,636	147,653,958	65.21%

### NO. OF SHARES TRADED

	2022	2023	NET CHANGE	CHANGE (%)
Daily	8,254,719	5,514,320	-2,740,399	-33.20%
Cumulative (1/2-28/2)	89,280,902	112,999,952	23,719,050	26.57%
Cumulative (2/1-28/2)	175,836,895	224,944,214	49,107,319	27.93%

### NO. OF TRANSACTIONS

	2022	2023	NET CHANGE	CHANGE (%)
Daily	2,706	3,720	1,014	37.47%
Cumulative (1/2-28/2)	51,587	75,744	24,157	46.83%
Cumulative (2/1-28/2)	111,575	153,415	41,840	37.50%

### SOME FINANCIAL RATIOS FOR THE ASE (28/2/2023)

SECTOR	P/E	P/BV	DIVIDEND YIELD (%)	TURNOVER (%)
FINANCIAL	10.852	0.849	5.380	0.065
SERVICES	10.023	1.535	3.762	0.163
INDUSTRY	5.682	3.002	3.721	0.114
OVERALL	7.593	1.304	4.602	0.090

### STOCK PRICE INDEX WEIGHTED BY FREE FLOAT MARKET CAPITALIZATION (1999=1000)

	MONDAY 27/02/2023	TUESDAY 28/02/2023	% CHANGE	
			DAY BEFORE	YTD
GENERAL	2642.6	2655.1	0.47%	6.14%
FINANCIAL	2773.9	2780.3	0.23%	3.27%
SERVICES	1821.6	1831.5	0.54%	5.21%
INDUSTRY	5992.6	6049.6	0.95%	14.31%

### STOCK PRICE INDEX WEIGHTED BY FREE FLOAT MARKET CAPITALIZATION ASE20 (2014=1000)

	1438.0	1444.7	0.46%	7.38%
--	--------	--------	-------	-------

### Total Return Index ASETR (2021=1074)

	1528.7	1535.8	0.46%	7.38%
--	--------	--------	-------	-------

### STOCK PRICE INDEX WEIGHTED BY MARKET CAPITALIZATION (1991=1000)

	MONDAY 27/02/2023	TUESDAY 28/02/2023	% CHANGE	
			DAY BEFORE	YTD
GENERAL	5137.9	5157.2	0.38%	9.02%
BANKS	6863.9	6871.6	0.11%	1.75%
INSURANCE	1300.9	1303.2	0.18%	-2.14%
SERVICES	933.5	928.1	-0.57%	8.93%
INDUSTRY	8042.8	8117.5	0.93%	17.95%

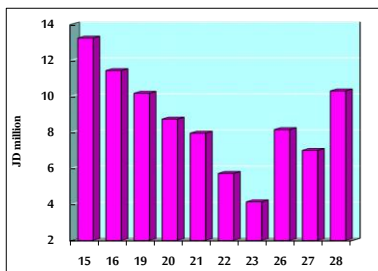
### STOCK PRICE MARKET INDEX WEIGHTED BY FREE FLOAT MARKET CAP. (2012=1000)

	MONDAY 27/02/2023	TUESDAY 28/02/2023	% CHANGE	
			DAY BEFORE	YTD
FIRST MARKET	1492.0	1498.9	0.46%	6.41%
SECOND MARKET	794.0	796.1	0.26%	0.96%

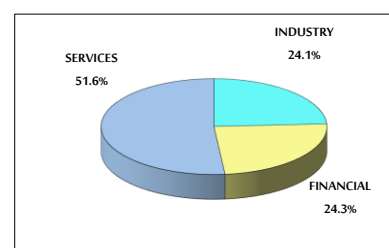
### MARKET CAPITALIZATION (JD)

	19,435,058,229	19,502,921,348	0.35%	8.33%
--	----------------	----------------	-------	-------

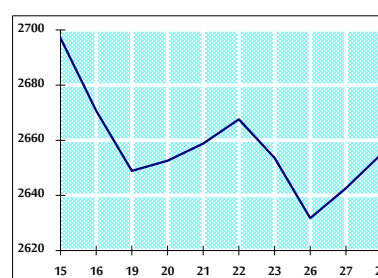
### VALUE TRADED FROM 15/2 TO 28/2/2023



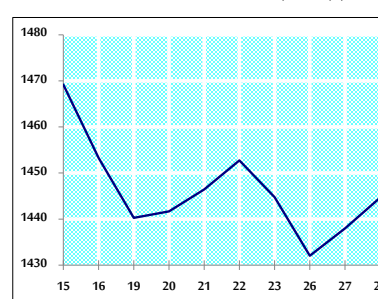
### VALUE TRADED BY SECTOR TUESDAY 28/2/2023



### GENERAL FREE FLOAT PRICE INDEX FROM 15/2 TO 28/2/2023



### ASE20 FREE FLOAT PRICE INDEX FROM 15/2 TO 28/2/2023



### GENERAL PRICE INDEX FROM 15/2 TO 28/2/2023

