

Daily Summary for Amman Stock Exchange

VALUE TRADED (JD)

	2022	2023	NET CHANGE	CHANGE (%)
Daily	7,058,844	9,208,706	2,149,862	30.46%
Cumulative (2/1-4/1)	16,377,003	23,351,583	6,974,580	42.59%
Cumulative (2/1-4/1)	16,377,003	23,351,583	6,974,580	42.59%

NO. OF SHARES TRADED

	2022	2023	NET CHANGE	CHANGE (%)
Daily	4,491,878	6,093,026	1,601,148	35.65%
Cumulative (2/1-4/1)	13,105,902	15,440,402	2,334,500	17.81%
Cumulative (2/1-4/1)	13,105,902	15,440,402	2,334,500	17.81%

NO. OF TRANSACTIONS

	2022	2023	NET CHANGE	CHANGE (%)
Daily	3,202	3,957	755	23.58%
Cumulative (2/1-4/1)	7,981	9,494	1,513	18.96%
Cumulative (2/1-4/1)	7,981	9,494	1,513	18.96%

SOME FINANCIAL RATIOS FOR THE ASE (4/1/2023)

SECTOR	P/E	P/BV	DIVIDEND YIELD (%)	TURNOVER (%)
FINANCIAL	14.871	0.891	4.630	0.088
SERVICES	19.340	1.484	3.910	0.128
INDUSTRY	12.323	2.725	4.136	0.121
OVERALL	13.681	1.291	4.450	0.100

STOCK PRICE INDEX WEIGHTED BY FREE FLOAT MARKET CAPITALIZATION (1999=1000)

	TUESDAY 03/01/2023	WEDNESDAY 04/01/2023	% CHANGE	
			DAY BEFORE	YTD
GENERAL	2545.1	2582.2	1.46%	3.22%
FINANCIAL	2720.0	2758.4	1.41%	2.46%
SERVICES	1762.9	1795.8	1.87%	3.16%
INDUSTRY	5501.0	5537.2	0.66%	4.63%

STOCK PRICE INDEX WEIGHTED BY FREE FLOAT MARKET CAPITALIZATION ASE20 (2014=1000)

	1376.0	1399.1	1.68%	4.00%
--	--------	--------	-------	-------

Total Return Index ASETR (2021=1074)

	1462.8	1487.3	1.68%	4.00%
--	--------	--------	-------	-------

STOCK PRICE INDEX WEIGHTED BY MARKET CAPITALIZATION (1991=1000)

	TUESDAY 03/01/2023	WEDNESDAY 04/01/2023	% CHANGE	
			DAY BEFORE	YTD
GENERAL	4852.6	4910.6	1.20%	3.81%
BANKS	6812.3	6898.3	1.26%	2.14%
INSURANCE	1332.8	1311.5	-1.59%	-1.51%
SERVICES	856.2	867.8	1.35%	1.85%
INDUSTRY	7248.8	7333.9	1.17%	6.57%

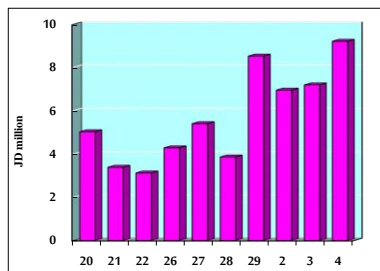
STOCK PRICE MARKET INDEX WEIGHTED BY FREE FLOAT MARKET CAP. (2012=1000)

	TUESDAY 03/01/2023	WEDNESDAY 04/01/2023	% CHANGE	
			DAY BEFORE	YTD
FIRST MARKET	1434.4	1456.4	1.53%	3.39%
SECOND MARKET	786.7	788.1	0.18%	-0.05%

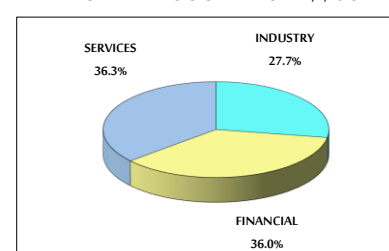
MARKET CAPITALIZATION (JD)

	18,420,939,383	18,628,930,484	1.13%	3.47%
--	----------------	----------------	-------	-------

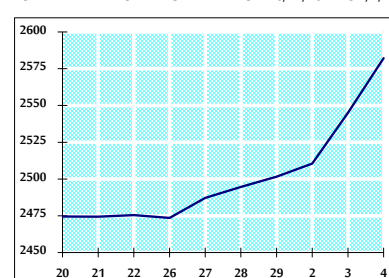
VALUE TRADED FROM 20/12/2022 TO 4/1/2023



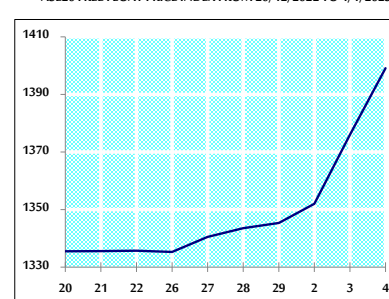
VALUE TRADED BY SECTOR WEDNESDAY 4/1/2023



GENERAL FREE FLOAT PRICE INDEX FROM 20/12/2022 TO 4/1/2023



ASE20 FREE FLOAT PRICE INDEX FROM 20/12/2022 TO 4/1/2023



GENERAL PRICE INDEX FROM 20/12/2022 TO 4/1/2023

