

Daily Summary for Amman Stock Exchange

VALUE TRADED (JD)

	2021	2022	NET CHANGE	CHANGE (%)
Daily	12,503,397	4,492,864	-8,010,533	-64.07%
Cumulative (1/12-15/12)	64,855,424	49,803,502	-15,051,922	-23.21%
Cumulative (2/1-15/12)	1,869,807,566	1,861,238,845	-8,568,721	-0.46%

NO. OF SHARES TRADED

	2021	2022	NET CHANGE	CHANGE (%)
Daily	8,992,388	3,235,108	-5,757,280	-64.02%
Cumulative (1/12-15/12)	55,052,422	44,821,783	-10,230,639	-18.58%
Cumulative (2/1-15/12)	1,474,921,170	1,120,599,243	-354,321,927	-24.02%

NO. OF TRANSACTIONS

	2021	2022	NET CHANGE	CHANGE (%)
Daily	3,342	2,604	-738	-22.08%
Cumulative (1/12-15/12)	33,448	26,228	-7,220	-21.59%
Cumulative (2/1-15/12)	787,094	718,411	-68,683	-8.73%

SOME FINANCIAL RATIOS FOR THE ASE (15/12/2022)

SECTOR	P/E	P/BV	DIVIDEND YIELD (%)	TURNOVER (%)
FINANCIAL	14.541	0.871	4.735	0.035
SERVICES	18.652	1.431	4.054	0.072
INDUSTRY	11.445	2.614	4.382	0.132
OVERALL	13.269	1.256	4.571	0.053

STOCK PRICE INDEX WEIGHTED BY FREE FLOAT MARKET CAPITALIZATION (1999=1000)

	WEDNESDAY 14/12/2022	THURSDAY 15/12/2022	% CHANGE	
			DAY BEFORE	YTD
GENERAL	2506.6	2497.4	-0.37%	17.88%
FINANCIAL	2692.7	2685.6	-0.26%	3.12%
SERVICES	1738.8	1731.8	-0.41%	30.46%
INDUSTRY	5355.0	5321.9	-0.62%	45.17%

STOCK PRICE INDEX WEIGHTED BY FREE FLOAT MARKET CAPITALIZATION ASE20 (2014=1000)

	1353.2	1346.5	-0.50%	25.33%
--	--------	--------	--------	--------

Total Return Index ASETR (2021=1074)

	1438.5	1431.4	-0.50%	33.23%
--	--------	--------	--------	--------

STOCK PRICE INDEX WEIGHTED BY MARKET CAPITALIZATION (1991=1000)

	WEDNESDAY 14/12/2022	THURSDAY 15/12/2022	% CHANGE	
			DAY BEFORE	YTD
GENERAL	4758.6	4736.8	-0.46%	18.26%
BANKS	6763.5	6743.7	-0.29%	2.70%
INSURANCE	1324.6	1328.2	0.28%	-0.01%
SERVICES	834.5	833.9	-0.07%	6.59%
INDUSTRY	7016.9	6962.1	-0.78%	48.11%

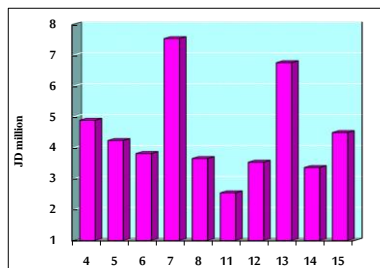
STOCK PRICE MARKET INDEX WEIGHTED BY FREE FLOAT MARKET CAP. (2012=1000)

	WEDNESDAY 14/12/2022	THURSDAY 15/12/2022	% CHANGE	
			DAY BEFORE	YTD
FIRST MARKET	1413.6	1407.4	-0.44%	22.92%
SECOND MARKET	780.6	782.2	0.20%	-16.48%

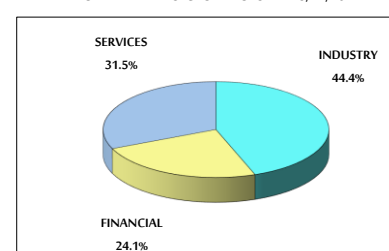
MARKET CAPITALIZATION (JD)

	18,108,867,356	18,028,507,628	-0.44%	16.35%
--	----------------	----------------	--------	--------

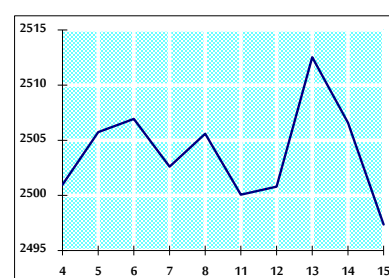
VALUE TRADED FROM 4/12 TO 15/12/2022



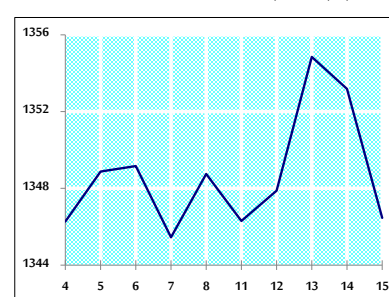
VALUE TRADED BY SECTOR THURSDAY 15/12/2022



GENERAL FREE FLOAT PRICE INDEX FROM 4/12 TO 15/12/2022



ASE20 FREE FLOAT PRICE INDEX FROM 4/12 TO 15/12/2022



GENERAL PRICE INDEX FROM 4/12 TO 15/12/2022

