

Daily Summary for Amman Stock Exchange

VALUE TRADED (JD)

	2021	2022	NET CHANGE	CHANGE (%)
Daily	5,160,762	3,361,936	-1,798,826	-34.86%
Cumulative (1/12-14/12)	52,352,027	45,310,638	-7,041,389	-13.45%
Cumulative (2/1-14/12)	1,857,304,169	1,856,745,981	-558,188	-0.03%

NO. OF SHARES TRADED

	2021	2022	NET CHANGE	CHANGE (%)
Daily	5,980,170	2,756,593	-3,223,577	-53.90%
Cumulative (1/12-14/12)	46,060,034	41,586,675	-4,473,359	-9.71%
Cumulative (2/1-14/12)	1,465,928,782	1,117,364,135	-348,564,647	-23.78%

NO. OF TRANSACTIONS

	2021	2022	NET CHANGE	CHANGE (%)
Daily	2,761	2,070	-691	-25.03%
Cumulative (1/12-14/12)	30,106	23,624	-6,482	-21.53%
Cumulative (2/1-14/12)	783,752	715,807	-67,945	-8.67%

SOME FINANCIAL RATIOS FOR THE ASE (14/12/2022)

SECTOR	P/E	P/BV	DIVIDEND YIELD (%)	TURNOVER (%)
FINANCIAL	14.579	0.873	4.723	0.034
SERVICES	18.708	1.436	4.042	0.071
INDUSTRY	11.532	2.634	4.349	0.067
OVERALL	13.330	1.262	4.550	0.045

STOCK PRICE INDEX WEIGHTED BY FREE FLOAT MARKET CAPITALIZATION (1999=1000)

	TUESDAY 13/12/2022	WEDNESDAY 14/12/2022	% CHANGE	
			DAY BEFORE	YTD
GENERAL	2512.5	2506.6	-0.24%	18.31%
FINANCIAL	2693.8	2692.7	-0.04%	3.39%
SERVICES	1756.8	1738.8	-1.02%	30.99%
INDUSTRY	5344.9	5355.0	0.19%	46.08%

STOCK PRICE INDEX WEIGHTED BY FREE FLOAT MARKET CAPITALIZATION ASE20 (2014=1000)

	1354.9	1353.2	-0.12%	25.95%

Total Return Index ASETR (2021=1074)

	1440.3	1438.5	-0.12%	33.90%

STOCK PRICE INDEX WEIGHTED BY MARKET CAPITALIZATION (1991=1000)

	TUESDAY 13/12/2022	WEDNESDAY 14/12/2022	% CHANGE	
			DAY BEFORE	YTD
GENERAL	4757.8	4758.6	0.02%	18.81%
BANKS	6766.5	6763.5	-0.04%	3.00%
INSURANCE	1320.9	1324.6	0.28%	-0.29%
SERVICES	844.2	834.5	-1.14%	6.66%
INDUSTRY	6987.4	7016.9	0.42%	49.28%

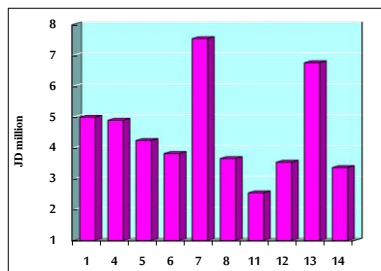
STOCK PRICE MARKET INDEX WEIGHTED BY FREE FLOAT MARKET CAP. (2012=1000)

	TUESDAY 13/12/2022	WEDNESDAY 14/12/2022	% CHANGE	
			DAY BEFORE	YTD
FIRST MARKET	1417.0	1413.6	-0.24%	23.47%
SECOND MARKET	782.2	780.6	-0.21%	-16.65%

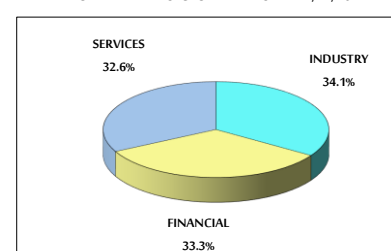
MARKET CAPITALIZATION (JD)

	18,105,908,088	18,108,867,356	0.02%	16.86%

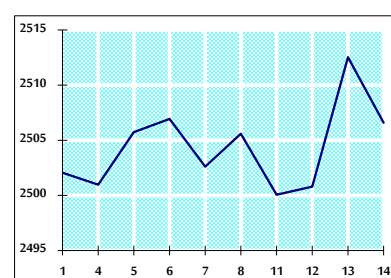
VALUE TRADED FROM 1/12 TO 14/12/2022



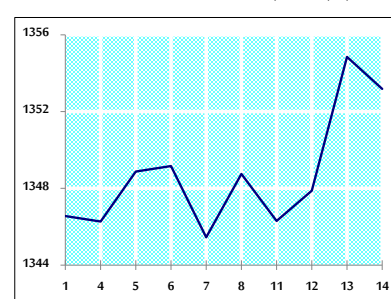
VALUE TRADED BY SECTOR WEDNESDAY 14/12/2022



GENERAL FREE FLOAT PRICE INDEX FROM 1/12 TO 14/12/2022



ASE20 FREE FLOAT PRICE INDEX FROM 1/12 TO 14/12/2022



GENERAL PRICE INDEX FROM 1/12 TO 14/12/2022

