

## Daily Summary for Amman Stock Exchange

### VALUE TRADED (JD )

	2021	2022	NET CHANGE	CHANGE (%)
Daily	4,064,994	6,753,435	2,688,441	66.14%
Cumulative (1/12-13/12)	47,191,265	41,948,702	-5,242,563	-11.11%
Cumulative (2/1-13/12)	1,852,143,407	1,853,384,045	1,240,638	0.07%

### NO. OF SHARES TRADED

	2021	2022	NET CHANGE	CHANGE (%)
Daily	3,395,044	5,697,078	2,302,034	67.81%
Cumulative (1/12-13/12)	40,079,864	38,830,082	-1,249,782	-3.12%
Cumulative (2/1-13/12)	1,459,948,612	1,114,607,542	-345,341,070	-23.65%

### NO. OF TRANSACTIONS

	2021	2022	NET CHANGE	CHANGE (%)
Daily	2,538	2,828	290	11.43%
Cumulative (1/12-13/12)	27,345	21,554	-5,791	-21.18%
Cumulative (2/1-13/12)	780,991	713,737	-67,254	-8.61%

### SOME FINANCIAL RATIOS FOR THE ASE (13/12/2022)

SECTOR	P/E	P/BV	DIVIDEND YIELD (%)	TURNOVER (%)
FINANCIAL	14.585	0.874	4.720	0.058
SERVICES	18.911	1.451	3.998	0.158
INDUSTRY	11.472	2.620	4.372	0.195
OVERALL	13.327	1.262	4.551	0.094

### STOCK PRICE INDEX WEIGHTED BY FREE FLOAT MARKET CAPITALIZATION (1999=1000)

	MONDAY 12/12/2022	TUESDAY 13/12/2022	% CHANGE	
			DAY BEFORE	YTD
GENERAL	2500.8	2512.5	0.47%	18.59%
FINANCIAL	2686.1	2693.8	0.29%	3.43%
SERVICES	1742.3	1756.8	0.83%	32.34%
INDUSTRY	5317.7	5344.9	0.51%	45.80%

### STOCK PRICE INDEX WEIGHTED BY FREE FLOAT MARKET CAPITALIZATION ASE20 (2014=1000)

	1347.9	1354.9	0.52%	26.11%
--	--------	--------	-------	--------

### Total Return Index ASETR (2021=1074)

	1432.9	1440.3	0.52%	34.06%
--	--------	--------	-------	--------

### STOCK PRICE INDEX WEIGHTED BY MARKET CAPITALIZATION (1991=1000)

	MONDAY 12/12/2022	TUESDAY 13/12/2022	% CHANGE	
			DAY BEFORE	YTD
GENERAL	4739.3	4757.8	0.39%	18.79%
BANKS	6745.8	6766.5	0.31%	3.05%
INSURANCE	1320.4	1320.9	0.04%	-0.56%
SERVICES	840.0	844.2	0.50%	7.90%
INDUSTRY	6955.8	6987.4	0.45%	48.65%

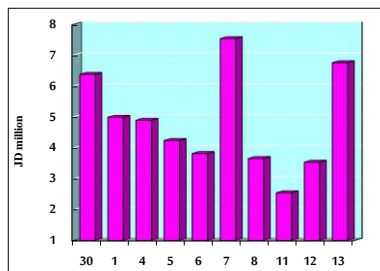
### STOCK PRICE MARKET INDEX WEIGHTED BY FREE FLOAT MARKET CAP. (2012=1000)

	MONDAY 12/12/2022	TUESDAY 13/12/2022	% CHANGE	
			DAY BEFORE	YTD
FIRST MARKET	1409.4	1417.0	0.54%	23.77%
SECOND MARKET	781.3	782.2	0.11%	-16.48%

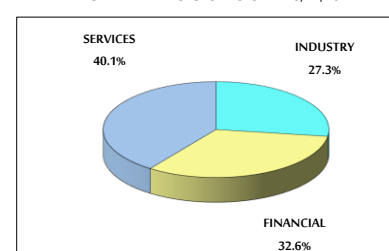
### MARKET CAPITALIZATION (JD)

	18,055,904,101	18,105,908,088	0.28%	16.84%
--	----------------	----------------	-------	--------

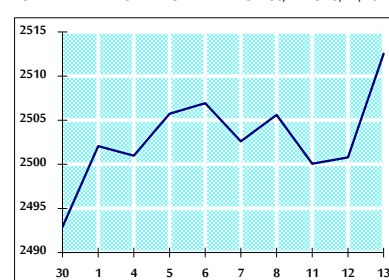
### VALUE TRADED FROM 30/11 TO 13/12/2022



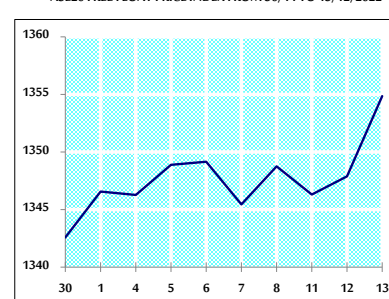
### VALUE TRADED BY SECTOR TUESDAY 13/12/2022



### GENERAL FREE FLOAT PRICE INDEX FROM 30/11 TO 13/12/2022



### ASE20 FREE FLOAT PRICE INDEX FROM 30/11 TO 13/12/2022



### GENERAL PRICE INDEX FROM 30/11 TO 13/12/2022

