

### Daily Summary for Amman Stock Exchange

VALUE TRADED (JD )

	2021	2022	NET CHANGE	CHANGE (%)
Daily	6,585,641	3,534,737	-3,050,904	-46.33%
Cumulative (1/12-12/12)	43,126,271	35,195,267	-7,931,004	-18.39%
Cumulative (2/1-12/12)	1,848,078,413	1,846,630,610	-1,447,803	-0.08%

NO. OF SHARES TRADED

	2021	2022	NET CHANGE	CHANGE (%)
Daily	5,393,774	3,539,323	-1,854,451	-34.38%
Cumulative (1/12-12/12)	36,684,820	33,133,004	-3,551,816	-9.68%
Cumulative (2/1-12/12)	1,456,553,568	1,108,910,464	-347,643,104	-23.87%

NO. OF TRANSACTIONS

	2021	2022	NET CHANGE	CHANGE (%)
Daily	2,999	2,257	-742	-24.74%
Cumulative (1/12-12/12)	24,807	18,726	-6,081	-24.51%
Cumulative (2/1-12/12)	778,453	710,909	-67,544	-8.68%

SOME FINANCIAL RATIOS FOR THE ASE (12/12/2022)

SECTOR	P/E	P/BV	DIVIDEND YIELD (%)	TURNOVER (%)
FINANCIAL	14.543	0.871	4.734	0.037
SERVICES	18.787	1.442	4.025	0.102
INDUSTRY	11.428	2.610	4.388	0.107
OVERALL	13.275	1.257	4.568	0.058

STOCK PRICE INDEX WEIGHTED BY FREE FLOAT MARKET CAPITALIZATION (1999=1000)

	SUNDAY 11/12/2022	MONDAY 12/12/2022	% CHANGE	
			DAY BEFORE	YTD
GENERAL	2500.1	2500.8	0.03%	18.04%
FINANCIAL	2686.7	2686.1	-0.02%	3.13%
SERVICES	1741.9	1742.3	0.03%	31.26%
INDUSTRY	5315.4	5317.7	0.04%	45.06%

STOCK PRICE INDEX WEIGHTED BY FREE FLOAT MARKET CAPITALIZATION ASE20 (2014=1000)

	1346.3	1347.9	0.12%	25.46%
--	--------	--------	-------	--------

Total Return Index ASETR (2021=1074)

	1431.2	1432.9	0.12%	33.37%
--	--------	--------	-------	--------

STOCK PRICE INDEX WEIGHTED BY MARKET CAPITALIZATION (1991=1000)

	SUNDAY 11/12/2022	MONDAY 12/12/2022	% CHANGE	
			DAY BEFORE	YTD
GENERAL	4742.6	4739.3	-0.07%	18.33%
BANKS	6765.6	6745.8	-0.29%	2.73%
INSURANCE	1335.2	1320.4	-1.11%	-0.60%
SERVICES	834.6	840.0	0.64%	7.36%
INDUSTRY	6956.1	6955.8	0.00%	47.98%

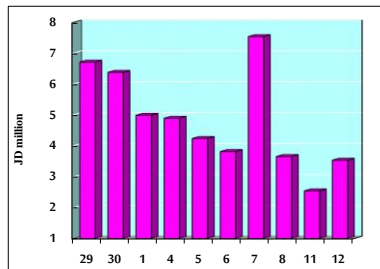
STOCK PRICE MARKET INDEX WEIGHTED BY FREE FLOAT MARKET CAP. (2012=1000)

	SUNDAY 11/12/2022	MONDAY 12/12/2022	% CHANGE	
			DAY BEFORE	YTD
FIRST MARKET	1409.4	1410.4	0.07%	23.19%
SECOND MARKET	781.3	779.3	-0.27%	-16.80%

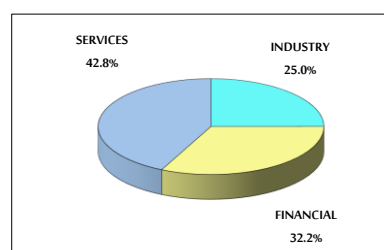
MARKET CAPITALIZATION (JD)

	18,055,904,101	18,038,205,059	-0.10%	16.41%
--	----------------	----------------	--------	--------

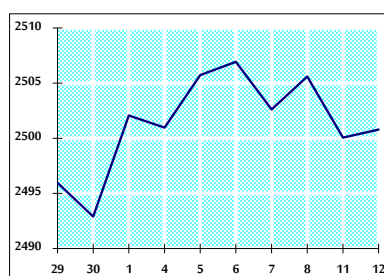
VALUE TRADED FROM 29/11 TO 12/12/2022



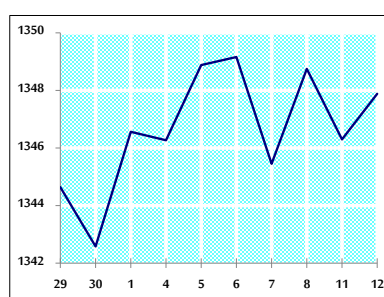
VALUE TRADED BY SECTOR MONDAY 12/12/2022



GENERAL FREE FLOAT PRICE INDEX FROM 29/11 TO 12/12/2022



ASE20 FREE FLOAT PRICE INDEX FROM 29/11 TO 12/12/2022



GENERAL PRICE INDEX FROM 29/11 TO 12/12/2022

