

## Daily Summary for Amman Stock Exchange

### VALUE TRADED (JD)

	2021	2022	NET CHANGE	CHANGE (%)
Daily	5,609,481	2,544,477	-3,065,004	-54.64%
Cumulative (1/12-11/12)	36,540,630	31,660,530	-4,880,100	-13.36%
Cumulative (2/1-11/12)	1,841,492,772	1,843,095,873	1,603,101	0.09%

### NO. OF SHARES TRADED

	2021	2022	NET CHANGE	CHANGE (%)
Daily	4,480,405	2,807,728	-1,672,677	-37.33%
Cumulative (1/12-11/12)	31,291,046	29,593,681	-1,697,365	-5.42%
Cumulative (2/1-11/12)	1,451,159,794	1,105,371,141	-345,788,653	-23.83%

### NO. OF TRANSACTIONS

	2021	2022	NET CHANGE	CHANGE (%)
Daily	3,348	1,802	-1,546	-46.18%
Cumulative (1/12-11/12)	21,808	16,469	-5,339	-24.48%
Cumulative (2/1-11/12)	775,454	708,652	-66,802	-8.61%

### SOME FINANCIAL RATIOS FOR THE ASE (11/12/2022)

SECTOR	P/E	P/BV	DIVIDEND YIELD (%)	TURNOVER (%)
FINANCIAL	14.586	0.874	4.720	0.035
SERVICES	18.752	1.439	4.032	0.067
INDUSTRY	11.422	2.609	4.391	0.075
OVERALL	13.285	1.258	4.565	0.046

### STOCK PRICE INDEX WEIGHTED BY FREE FLOAT MARKET CAPITALIZATION (1999=1000)

	THURSDAY 08/12/2022	SUNDAY 11/12/2022	% CHANGE	
			DAY BEFORE	YTD
GENERAL	2505.6	2500.1	-0.22%	18.00%
FINANCIAL	2686.2	2686.7	0.02%	3.16%
SERVICES	1757.0	1741.9	-0.86%	31.22%
INDUSTRY	5323.4	5315.4	-0.15%	45.00%

### STOCK PRICE INDEX WEIGHTED BY FREE FLOAT MARKET CAPITALIZATION ASE20 (2014=1000)

	1348.8	1346.3	-0.18%	25.31%
--	--------	--------	--------	--------

### Total Return Index ASETR (2021=1074)

	1433.8	1431.2	-0.18%	33.21%
--	--------	--------	--------	--------

### STOCK PRICE INDEX WEIGHTED BY MARKET CAPITALIZATION (1991=1000)

	THURSDAY 08/12/2022	SUNDAY 11/12/2022	% CHANGE	
			DAY BEFORE	YTD
GENERAL	4746.6	4742.6	-0.08%	18.41%
BANKS	6750.9	6765.6	0.22%	3.03%
INSURANCE	1345.9	1335.2	-0.80%	0.51%
SERVICES	836.7	834.6	-0.25%	6.68%
INDUSTRY	6979.3	6956.1	-0.33%	47.99%

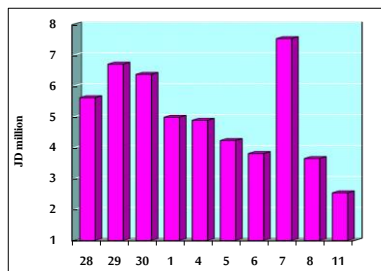
### STOCK PRICE MARKET INDEX WEIGHTED BY FREE FLOAT MARKET CAP. (2012=1000)

	THURSDAY 08/12/2022	SUNDAY 11/12/2022	% CHANGE	
			DAY BEFORE	YTD
FIRST MARKET	1412.7	1409.4	-0.23%	23.10%
SECOND MARKET	782.9	781.3	-0.20%	-16.57%

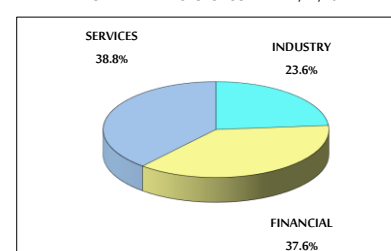
### MARKET CAPITALIZATION (JD)

	18,071,146,604	18,055,904,101	-0.08%	16.52%
--	----------------	----------------	--------	--------

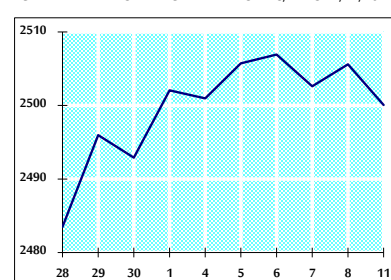
### VALUE TRADED FROM 28/11 TO 11/12/2022



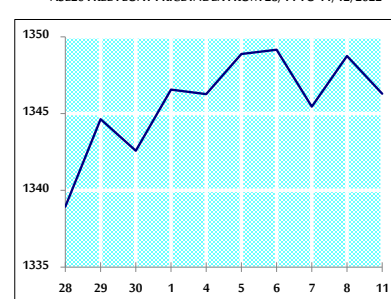
### VALUE TRADED BY SECTOR SUNDAY 11/12/2022



### GENERAL FREE FLOAT PRICE INDEX FROM 28/11 TO 11/12/2022



### ASE20 FREE FLOAT PRICE INDEX FROM 28/11 TO 11/12/2022



### GENERAL PRICE INDEX FROM 28/11 TO 11/12/2022

