

Daily Summary for Amman Stock Exchange

VALUE TRADED (JD)

	2021	2022	NET CHANGE	CHANGE (%)
Daily	4,350,854	3,815,591	-535,263	-12.30%
Cumulative (1/12-6/12)	17,788,598	17,929,256	140,658	0.79%
Cumulative (2/1-6/12)	1,822,740,740	1,829,364,599	6,623,859	0.36%

NO. OF SHARES TRADED

	2021	2022	NET CHANGE	CHANGE (%)
Daily	3,952,947	4,423,016	470,069	11.89%
Cumulative (1/12-6/12)	15,378,361	19,197,401	3,819,040	24.83%
Cumulative (2/1-6/12)	1,435,247,109	1,094,974,861	-340,272,248	-23.71%

NO. OF TRANSACTIONS

	2021	2022	NET CHANGE	CHANGE (%)
Daily	3,036	2,463	-573	-18.87%
Cumulative (1/12-6/12)	11,873	9,890	-1,983	-16.70%
Cumulative (2/1-6/12)	765,519	702,073	-63,446	-8.29%

SOME FINANCIAL RATIOS FOR THE ASE (6/12/2022)

SECTOR	P/E	P/BV	DIVIDEND YIELD (%)	TURNOVER (%)
FINANCIAL	14.614	0.876	4.711	0.054
SERVICES	18.877	1.449	4.006	0.147
INDUSTRY	11.431	2.611	4.387	0.050
OVERALL	13.314	1.261	4.555	0.073

STOCK PRICE INDEX WEIGHTED BY FREE FLOAT MARKET CAPITALIZATION (1999=1000)

	MONDAY 05/12/2022	TUESDAY 06/12/2022	% CHANGE	
			DAY BEFORE	YTD
GENERAL	2505.7	2506.9	0.05%	18.33%
FINANCIAL	2688.8	2690.1	0.05%	3.29%
SERVICES	1755.0	1759.2	0.24%	32.53%
INDUSTRY	5315.1	5304.0	-0.21%	44.68%

STOCK PRICE INDEX WEIGHTED BY FREE FLOAT MARKET CAPITALIZATION ASE20 (2014=1000)

	1348.9	1349.2	0.02%	25.58%
--	--------	--------	-------	--------

Total Return Index ASETR (2021=1074)

	1433.9	1434.2	0.02%	33.50%
--	--------	--------	-------	--------

STOCK PRICE INDEX WEIGHTED BY MARKET CAPITALIZATION (1991=1000)

	MONDAY 05/12/2022	TUESDAY 06/12/2022	% CHANGE	
			DAY BEFORE	YTD
GENERAL	4754.8	4752.9	-0.04%	18.67%
BANKS	6774.0	6771.6	-0.03%	3.13%
INSURANCE	1350.7	1358.0	0.54%	2.23%
SERVICES	835.6	836.2	0.08%	6.88%
INDUSTRY	6984.3	6977.2	-0.10%	48.44%

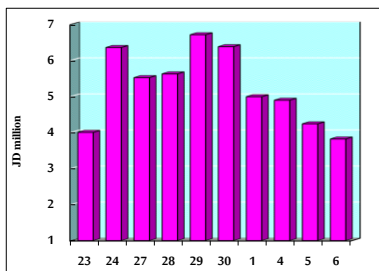
STOCK PRICE MARKET INDEX WEIGHTED BY FREE FLOAT MARKET CAP. (2012=1000)

	MONDAY 05/12/2022	TUESDAY 06/12/2022	% CHANGE	
			DAY BEFORE	YTD
FIRST MARKET	1412.2	1413.2	0.07%	23.43%
SECOND MARKET	783.7	782.5	-0.15%	-16.45%

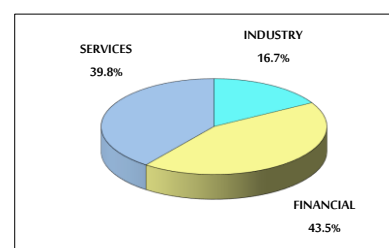
MARKET CAPITALIZATION (JD)

	18,101,454,780	18,094,722,236	-0.04%	16.77%
--	----------------	----------------	--------	--------

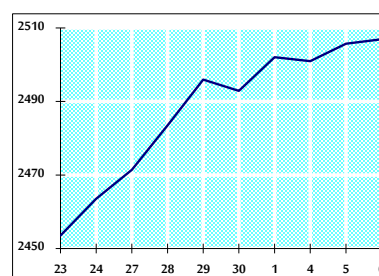
VALUE TRADED FROM 23/11 TO 6/12/2022



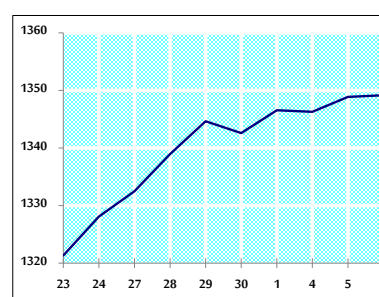
VALUE TRADED BY SECTOR TUESDAY 6/12/2022



GENERAL FREE FLOAT PRICE INDEX FROM 23/11 TO 6/12/2022



ASE20 FREE FLOAT PRICE INDEX FROM 23/11 TO 6/12/2022



GENERAL PRICE INDEX FROM 23/11 TO 6/12/2022

