

Daily Summary for Amman Stock Exchange

VALUE TRADED (JD)

	2021	2022	NET CHANGE	CHANGE (%)
Daily	5,675,904	3,860,443	-1,815,461	-31.99%
Cumulative (1/12-28/12)	133,983,747	83,747,721	-50,236,026	-37.49%
Cumulative (2/1-28/12)	1,938,935,889	1,895,183,064	-43,752,825	-2.26%

NO. OF SHARES TRADED

	2021	2022	NET CHANGE	CHANGE (%)
Daily	4,438,864	3,433,243	-1,005,621	-22.65%
Cumulative (1/12-28/12)	98,069,793	72,837,480	-25,232,313	-25.73%
Cumulative (2/1-28/12)	1,517,938,541	1,148,614,940	-369,323,601	-24.33%

NO. OF TRANSACTIONS

	2021	2022	NET CHANGE	CHANGE (%)
Daily	2,371	2,338	-33	-1.39%
Cumulative (1/12-28/12)	55,131	42,709	-12,422	-22.53%
Cumulative (2/1-28/12)	808,777	734,892	-73,885	-9.14%

SOME FINANCIAL RATIOS FOR THE ASE (28/12/2022)

SECTOR	P/E	P/BV	DIVIDEND YIELD (%)	TURNOVER (%)
FINANCIAL	14.515	0.870	4.743	0.036
SERVICES	18.784	1.441	4.025	0.122
INDUSTRY	11.341	2.590	4.422	0.060
OVERALL	13.226	1.252	4.585	0.056

STOCK PRICE INDEX WEIGHTED BY FREE FLOAT MARKET CAPITALIZATION (1999=1000)

	TUESDAY 27/12/2022	WEDNESDAY 28/12/2022	% CHANGE	
			DAY BEFORE	YTD
GENERAL	2487.1	2494.6	0.30%	17.74%
FINANCIAL	2678.5	2680.1	0.06%	2.90%
SERVICES	1727.8	1739.5	0.68%	31.04%
INDUSTRY	5259.3	5287.7	0.54%	44.24%

STOCK PRICE INDEX WEIGHTED BY FREE FLOAT MARKET CAPITALIZATION ASE20 (2014=1000)

	1340.5	1343.5	0.22%	25.05%
--	--------	--------	-------	--------

Total Return Index ASETR (2021=1074)

	1425.1	1428.2	0.22%	32.94%
--	--------	--------	-------	--------

STOCK PRICE INDEX WEIGHTED BY MARKET CAPITALIZATION (1991=1000)

	TUESDAY 27/12/2022	WEDNESDAY 28/12/2022	% CHANGE	
			DAY BEFORE	YTD
GENERAL	4707.8	4721.7	0.30%	17.89%
BANKS	6719.1	6724.4	0.08%	2.41%
INSURANCE	1342.0	1342.0	0.00%	1.03%
SERVICES	843.6	848.4	0.56%	8.44%
INDUSTRY	6860.0	6891.7	0.46%	46.62%

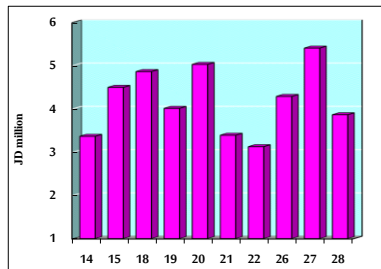
STOCK PRICE MARKET INDEX WEIGHTED BY FREE FLOAT MARKET CAP. (2012=1000)

	TUESDAY 27/12/2022	WEDNESDAY 28/12/2022	% CHANGE	
			DAY BEFORE	YTD
FIRST MARKET	1402.2	1405.5	0.23%	22.76%
SECOND MARKET	777.0	782.5	0.71%	-16.45%

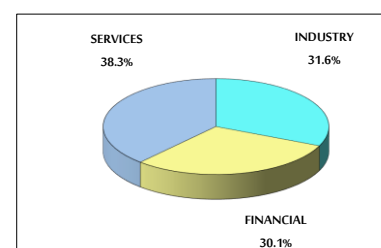
MARKET CAPITALIZATION (JD)

	17,918,516,090	17,970,739,823	0.29%	15.97%
--	----------------	----------------	-------	--------

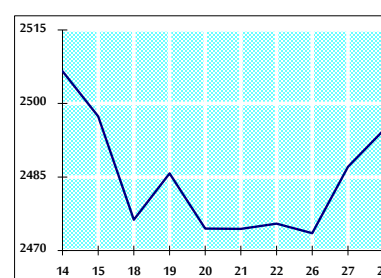
VALUE TRADED FROM 14/12 TO 28/12/2022



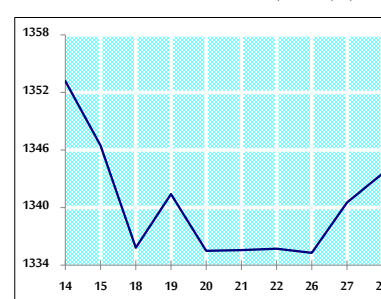
VALUE TRADED BY SECTOR WEDNESDAY 28/12/2022



GENERAL FREE FLOAT PRICE INDEX FROM 14/12 TO 28/12/2022



ASE20 FREE FLOAT PRICE INDEX FROM 14/12 TO 28/12/2022



GENERAL PRICE INDEX FROM 14/12 TO 28/12/2022

