

### Daily Summary for Amman Stock Exchange

VALUE TRADED (JD)

	2021	2022	NET CHANGE	CHANGE (%)
Daily	4,109,478	7,724,840	3,615,362	87.98%
Cumulative (2/10-12/10)	58,889,845	47,882,028	-11,007,817	-18.69%
Cumulative (2/1-12/10)	1,607,342,299	1,615,972,114	8,629,815	0.54%

NO. OF SHARES TRADED

	2021	2022	NET CHANGE	CHANGE (%)
Daily	3,907,167	6,485,358	2,578,191	65.99%
Cumulative (2/10-12/10)	41,068,828	37,989,207	-3,079,621	-7.50%
Cumulative (2/1-12/10)	1,252,266,738	926,359,621	-325,907,117	-26.03%

NO. OF TRANSACTIONS

	2021	2022	NET CHANGE	CHANGE (%)
Daily	2,894	3,496	602	20.80%
Cumulative (2/10-12/10)	27,985	25,290	-2,695	-9.63%
Cumulative (2/1-12/10)	639,594	606,944	-32,650	-5.10%

SOME FINANCIAL RATIOS FOR THE ASE (12/10/2022)

SECTOR	P/E	P/BV	DIVIDEND YIELD (%)	TURNOVER (%)
FINANCIAL	14.312	0.858	4.810	0.103
SERVICES	18.957	1.440	4.018	0.158
INDUSTRY	11.955	2.730	4.195	0.029
OVERALL	13.405	1.269	4.524	0.106

STOCK PRICE INDEX WEIGHTED BY FREE FLOAT MARKET CAPITALIZATION (1999=1000)

	TUESDAY 11/10/2022	WEDNESDAY 12/10/2022	% CHANGE	
			DAY BEFORE	YTD
GENERAL	2502.2	2506.1	0.15%	18.29%
FINANCIAL	2656.0	2663.0	0.26%	2.25%
SERVICES	1771.7	1762.5	-0.52%	32.77%
INDUSTRY	5408.8	5444.3	0.65%	48.51%

STOCK PRICE INDEX WEIGHTED BY FREE FLOAT MARKET CAPITALIZATION ASE20 (2014=1000)

	1345.1	1348.5	0.25%	25.52%
--	--------	--------	-------	--------

Total Return Index ASETR (2021=1074)

	1429.9	1433.5	0.25%	33.43%
--	--------	--------	-------	--------

STOCK PRICE INDEX WEIGHTED BY MARKET CAPITALIZATION (1991=1000)

	TUESDAY 11/10/2022	WEDNESDAY 12/10/2022	% CHANGE	
			DAY BEFORE	YTD
GENERAL	4764.1	4785.3	0.44%	19.48%
BANKS	6592.3	6593.7	0.02%	0.42%
INSURANCE	1386.7	1387.9	0.08%	4.48%
SERVICES	830.4	833.8	0.42%	6.58%
INDUSTRY	7230.6	7295.9	0.90%	55.22%

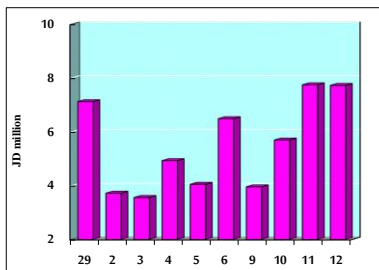
STOCK PRICE MARKET INDEX WEIGHTED BY FREE FLOAT MARKET CAP. (2012=1000)

	TUESDAY 11/10/2022	WEDNESDAY 12/10/2022	% CHANGE	
			DAY BEFORE	YTD
FIRST MARKET	1405.9	1408.7	0.20%	23.04%
SECOND MARKET	802.1	800.4	-0.20%	-14.54%

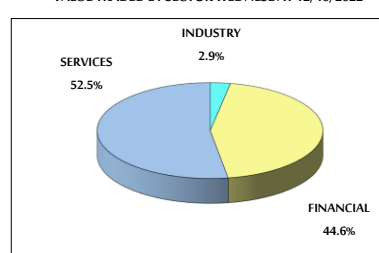
MARKET CAPITALIZATION (JD)

	18,271,032,335	18,209,932,949	-0.33%	17.52%
--	----------------	----------------	--------	--------

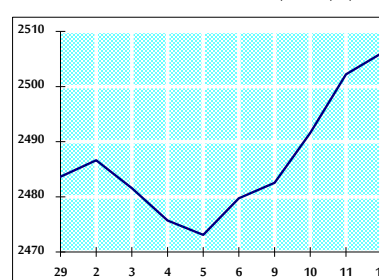
VALUE TRADED FROM 29/9 TO 12/10/2022



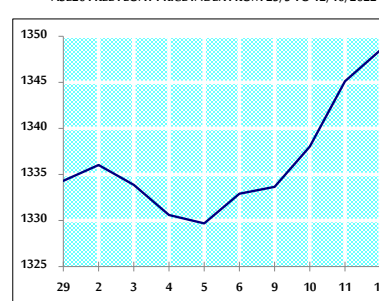
VALUE TRADED BY SECTOR WEDNESDAY 12/10/2022



GENERAL FREE FLOAT PRICE INDEX FROM 29/9 TO 12/10/2022



ASE20 FREE FLOAT PRICE INDEX FROM 29/9 TO 12/10/2022



GENERAL PRICE INDEX FROM 29/9 TO 12/10/2022

