

Daily Summary for Amman Stock Exchange

VALUE TRADED (JD)

	2021	2022	NET CHANGE	CHANGE (%)
Daily	4,368,893	4,629,962	261,069	5.98%
Cumulative (2/10-17/10)	76,096,062	63,598,241	-12,497,821	-16.42%
Cumulative (2/1-17/10)	1,624,548,516	1,631,688,327	7,139,811	0.44%

NO. OF SHARES TRADED

	2021	2022	NET CHANGE	CHANGE (%)
Daily	3,209,563	2,948,714	-260,849	-8.13%
Cumulative (2/10-17/10)	54,893,933	47,873,232	-7,020,701	-12.79%
Cumulative (2/1-17/10)	1,266,091,843	936,243,646	-329,848,197	-26.05%

NO. OF TRANSACTIONS

	2021	2022	NET CHANGE	CHANGE (%)
Daily	3,016	2,858	-158	-5.24%
Cumulative (2/10-17/10)	38,447	33,307	-5,140	-13.37%
Cumulative (2/1-17/10)	650,056	614,961	-35,095	-5.40%

SOME FINANCIAL RATIOS FOR THE ASE (17/10/2022)

SECTOR	P/E	P/BV	DIVIDEND YIELD (%)	TURNOVER (%)
FINANCIAL	14.251	0.854	4.831	0.035
SERVICES	18.785	1.427	4.055	0.095
INDUSTRY	11.805	2.696	4.248	0.041
OVERALL	13.292	1.259	4.563	0.048

STOCK PRICE INDEX WEIGHTED BY FREE FLOAT MARKET CAPITALIZATION (1999=1000)

	SUNDAY 16/10/2022	MONDAY 17/10/2022	% CHANGE	
			DAY BEFORE	YTD
GENERAL	2498.3	2494.2	-0.16%	17.73%
FINANCIAL	2661.1	2661.9	0.03%	2.20%
SERVICES	1757.0	1742.6	-0.82%	31.28%
INDUSTRY	5393.1	5399.7	0.12%	47.30%

STOCK PRICE INDEX WEIGHTED BY FREE FLOAT MARKET CAPITALIZATION ASE20 (2014=1000)

	1344.1	1344.1	0.00%	25.11%
--	--------	--------	-------	--------

Total Return Index ASETR (2021=1074)

	1428.8	1428.8	0.00%	33.00%
--	--------	--------	-------	--------

STOCK PRICE INDEX WEIGHTED BY MARKET CAPITALIZATION (1991=1000)

	SUNDAY 16/10/2022	MONDAY 17/10/2022	% CHANGE	
			DAY BEFORE	YTD
GENERAL	4753.2	4745.0	-0.17%	18.47%
BANKS	6576.1	6564.3	-0.18%	-0.03%
INSURANCE	1390.0	1387.8	-0.16%	4.47%
SERVICES	832.9	828.8	-0.49%	5.94%
INDUSTRY	7203.1	7198.1	-0.07%	53.13%

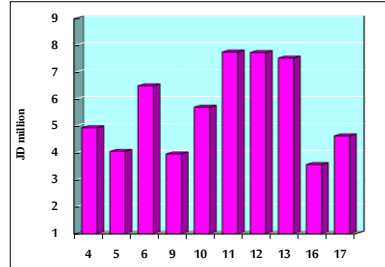
STOCK PRICE MARKET INDEX WEIGHTED BY FREE FLOAT MARKET CAP. (2012=1000)

	SUNDAY 16/10/2022	MONDAY 17/10/2022	% CHANGE	
			DAY BEFORE	YTD
FIRST MARKET	1404.3	1402.7	-0.11%	22.51%
SECOND MARKET	799.0	796.7	-0.30%	-14.94%

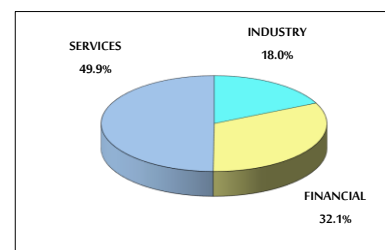
MARKET CAPITALIZATION (JD)

	18,093,097,628	18,063,165,812	-0.17%	16.57%
--	----------------	----------------	--------	--------

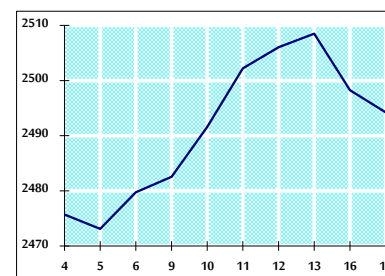
VALUE TRADED FROM 4/10 TO 17/10/2022



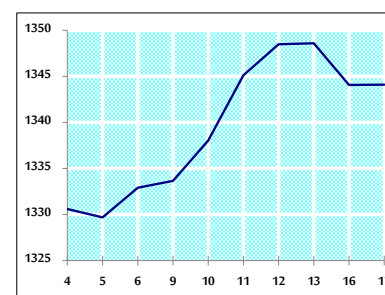
VALUE TRADED BY SECTOR MONDAY 17/10/2022



GENERAL FREE FLOAT PRICE INDEX FROM 4/10 TO 17/10/2022



ASE20 FREE FLOAT PRICE INDEX FROM 4/10 TO 17/10/2022



GENERAL PRICE INDEX FROM 4/10 TO 17/10/2022

